

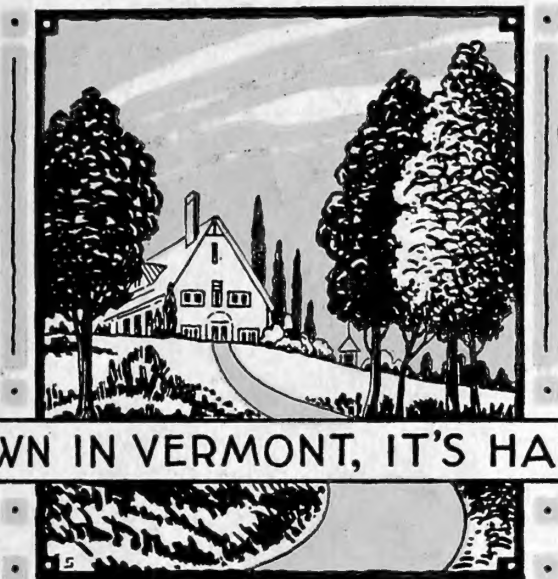
Historic, archived document

Do not assume content reflects current scientific knowledge, policies, or practices.

62.87

LIBRARY
RECEIVED
★ FEB 19 1929 ★
U. S. Department of Agriculture

TREES & PLANTS FROM VERMONT FOR 1929



"GROWN IN VERMONT, IT'S HARDY"

GEORGE D. AIKEN
• PUTNEY • VERMONT •



TREES *and* PLANTS
FROM
VERMONT *for* 1929



GEORGE D. AIKEN
PUTNEY, VERMONT

"Grown in Vermont, It's Hardy"



Terms and Conditions of Sale

READ CAREFULLY BEFORE ORDERING

Prices listed herein are all F.O.B. Putney, and include packing and delivery to the railroad station.

DISCOUNT—All Spring orders, accompanied by full amount in cash, and received before March 1st, are subject to 10% discount. Orders received during March, accompanied by full amount in cash, are subject to 5% discount. Prices net after April 1st.

All orders should be accompanied by at least 25% of the amount. The balance should be sent before time of shipping or the order will be shipped C.O.D.

TRANSPORTATION. Please state how you want your order shipped. Unless you do so state, we must use our own judgment in the matter. Small orders are ordinarily sent by mail at least expense, the postage being paid by you to the postman, upon delivery. Fruit trees and evergreens, large shrubs and shade trees should be sent by express or freight, but freight shipments are not advisable except on carlots, and shipments going only short distances.

TRUCK DELIVERY. Persons within a hundred miles of our nursery who are using large quantities of stock will find delivery by truck desirable. Our delivery rates are very reasonable and stock will be at your home in a few hours after being dug.

TIME OF SHIPMENT. Orders received during the Winter and early Spring may be shipped on a date specified by the customer, but orders received in late Spring during the rush season will be filled in the order in which they are received. For our mutual advantage, we urge you to place your orders early.

CLAIMS. On receipt of stock, examine the shipment carefully, and if it is damaged in transit, notify the agent of the transportation company at once, and enter claim with them for the amount of damage. If stock is unsatisfactory through any fault of ours, notify us at once. Any complaints regarding the quality of the plants must be made within five days after receipt of stock.

When stock is received, plant immediately. Where this is impossible, dig a trench and bury the roots with earth until planting time. Fruit trees and dormant shrubs may be left in ordinary cellar storage for a few days, if the roots are kept moist. Never wet the tops of strawberry plants. It rots the crowns.

SUBSTITUTION. We do not substitute without permission. If ordering late please mention a second choice or state whether we may substitute similar varieties.

GUARANTEE. All stock is guaranteed true to name and free from disease.

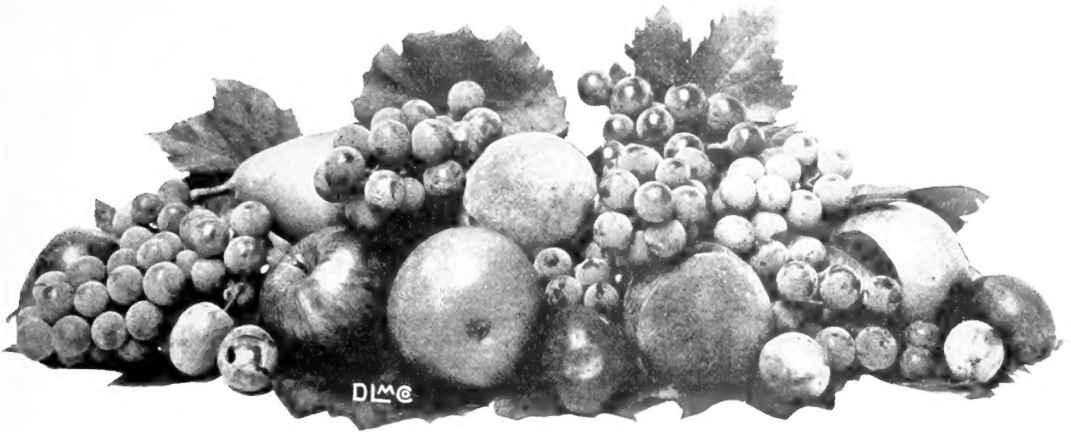
CANADIAN CUSTOMERS. To avoid delay in shipping your order, write to Secretary of the Destructive Insect and Pest Act Advisory Board, Department of Agriculture, Ottawa, for permit to import, and give your permit number on the order you send us.

RATES. Where dozen rates are given, six plants of one size and variety will take this rate. For example: Six Richard Wallace Phlox will sell at the 12 rate, but 2 Richard Wallace, 2 Dawn and 2 B. Comte will take the single rate.

Where 10 rates are given, 5 of one size and variety, such as 5 Baldwin Apple 11-16 in. will take the 10 rate, but 2 Baldwin and 3 Cortland will be sold only at the single rate.

SERVICE DEPARTMENT. Should you desire assistance in the selection of varieties, planning your orchard, shrubbery border, foundation planting or perennial border, we will gladly assist you.

Certificate of Inspection Accompanies Each Shipment



FRUIT TREES

With the readjustment of agricultural and commercial interests in the United States, the importance of fruit growing through New England and other northeastern states cannot be overemphasized. It has been proven beyond a doubt that the fruit sections in the remote parts of the country cannot compete in any way with that of our own northeastern states. Whether we like it or not, we must face the fact that general agriculture, involving the extensive growing of corn, oats, and other grain, is on the decline, owing to the fact that we cannot compete with the central and western states in this respect. It is therefore inevitable that a large percentage of farm lands, not being used, must revert to timber, but with our natural fruit lands, easy access to the markets, and the unexcelled quality of the fruits we grow, there is no doubt but what we shall take our proper place as the leading fruit growing section of America. For the past few years, Vermont growers have been obtaining as high as \$8.00 to \$13.00 per barrel for their apples in the markets of New York.

One does not need to be of exceptional foresight to see that New England and eastern New York are more and more becoming the Summer playground and vacation land of the country. With this fact in mind, it will be well when making your plantings of fruit trees, to plant extensively such kinds and varieties as will sell to good advantage during the Summer months. The fruit growers will find that our Summer vacationists are not only buying enormous quantities of the better sorts of fresh fruits, but that they will also be in the market for high grade jams, jellies, preserves, and other by-products of the fruit industry.

I believe that the person who recognizes the fact that New England in the future will be best known for its fruits, forests and natural playgrounds, and who plants now with the idea of being able in a few years to supply what the market will demand, will profit accordingly.

In submitting our list of varieties of fruit trees, we wish to say that we offer only kinds that we believe to be of real value under suitable conditions. Most varieties have faults as well as virtues. We cannot afford space here to give more than brief descriptions, but will gladly assist you in choosing varieties adapted to your locality, if you wish. Our trees this year are of very good quality, and you will find our prices attractive.

APPLE TREES

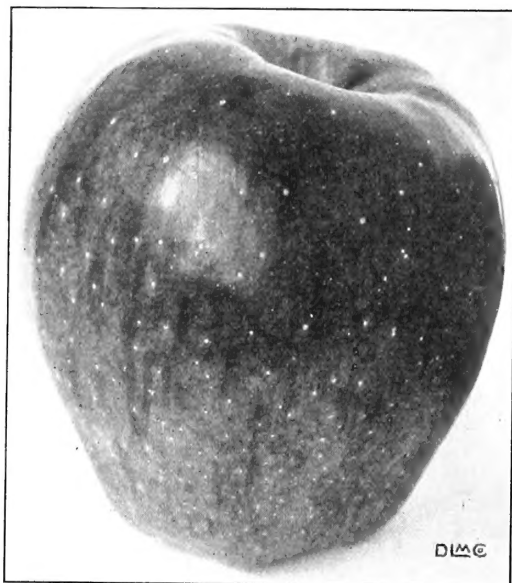
Note.—5 or more of one variety, such as 5 Baldwin or 5 Delicious, at 10 rates; 50 or more of 1 variety at 100 rates.

	Each	10	100
2 yr., 5 to 7 ft., 11-16 in. diameter.....	\$0.85	\$7.00	\$50.00
2 yr., 4 to 6 ft., 5/8 in. diameter.....	.75	6.50	40.00
2 yr., 3 to 5 ft., 1/2 in. diameter.....	.65	5.50	30.00
1 yr. No. 1 whips, 4 to 5 ft.....	.75	6.50	40.00

Baldwin. The fine old standby. A good keeper and shipper. Color red. Nov. to April. Not hardy in northern New England.

Chenango Strawberry. The genuine old-fashioned strawberry apple of most delicious quality. Conical, striped red and ripening in late August and September. 1-yr. trees from 2 to 4 ft. for \$1.00 each.

Cortland. This variety, a cross between McIntosh and Ben Davis, is being more widely planted each year. While it does not seem to be as good quality as McIntosh, the fact that it is considerably later and hangs well on the trees indicates that it may be an excellent variety to supplement, but not supplant, the McIntosh.



Delicious Apple

APPLE TREES—Continued

Delicious. One of the most widely planted of all varieties, and succeeding well in all regions where apples can be grown. Quite an easy apple to grow well. Of highest dessert quality, being very nearly sweet. A good yielder and keeper. Dec. to April.

Duchess. A wonderfully good culinary apple for September use. The trees never get very large and they bear very young. Fruit is large and striped and not seriously bothered by insect pests.

Fameuse. This variety was introduced into America about 300 years ago, and to this date is one of the most desirable of all varieties in northern sections where it grows to perfection. Fruit striped or blotched red and of the very highest quality. Very hardy. Oct. to Jan.

Gravenstein. One of our highest quality apples. Fruit large, striped. Not entirely hardy. Oct. to Dec.

Red Gravenstein. This new variety is a bud sport of the old Gravenstein and practically identical with it except in color, which is solid red. 1-yr. trees only.

Hubbardston Nonesuch. A dessert apple that does well in central and southern New England. Fruit sub-acid, striped. Nov. to Feb.

Jonathan. A high quality Apple, grown extensively as a filler. Bears very young and freely. Grows well in parts of New England, but does much better through the more western states. Medium size, red. Nov. to March.

King. A large striped Apple of very good quality and in good demand on the market. The tree is an annual bearer and of about the same hardiness as Baldwin.

Lobo. Apparently a cross between McIntosh and Wolf River, having almost the size of the latter, but of better quality. 1-yr. 2 to 4 ft. trees \$1.00 each.

McIntosh. The New England McIntosh sells for much the highest price of all apples on the New York markets, and as this variety can be grown to perfection in only a limited range, it is doubtful if it can ever be overplanted. In planting a McIntosh orchard, be sure to interplant a few of some other good pollenizing varieties. Red Astrachan, Northern Spy, Wealthy, and Wagener are recommended. The demand for McIntosh is so great that we advise early ordering of this variety. Oct. to Jan.

Northern Spy. One of the best varieties for New England and New York. A heavy yielder. Quality excellent. Striped red. Nov. to March.

Northwestern Greening. Larger than the Rhode Island, but not so good quality. Very hardy. Nov. to Mar.

Pound Sweet. This is one of the fine, old-fashioned apples which used to be found in every orchard. One of the sweetest of all apples, very large, and of golden yellow color. The tree grows to medium size. Is not hardy far north. Nov. to Feb.

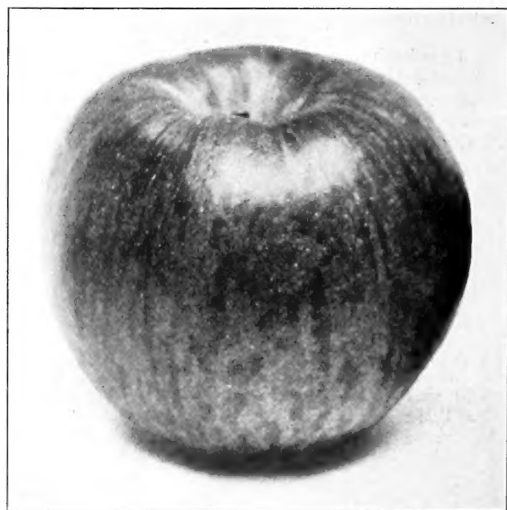
Porter. The demand for the fine old Porter has been such that we are now growing trees for sale. 1-yr. 2 to 4 ft. trees only at \$1.00 each.

Red Astrachan. This very early, well-known apple has been in great demand during the last few years, and will continue so, owing to the heavy influx of Summer tourists to our northern states. Very hardy. July and Aug.

Red Spy. This variety is a bud sport of Northern Spy and is identical with it except for it being a solid red color. One of the most promising new varieties of apples. 1-yr. trees only.

R. I. Greening. One of the very best commercial varieties, as it bears young and heavily. It is an annual bearer and in the long run cannot be surpassed for profit, with the possible exceptions of McIntosh, and Northern Spy. Nov. to March.

Roxbury Russet. The old-fashioned late-keeping Russet. Is in much greater demand than it was a few years ago. A variety which will keep into the following Summer in the ordinary cellar storage. Has a place in the home orchard. Jan. to June.



Gravenstein Apple

Stayman Winesap. A fine quality red and yellow apple. Late keeper. Desirable for central states.

Sutton Beauty. Of high quality. Supposed to be a cross between Baldwin and Hubbardston Nov. to Feb.

Sweet Bough. Large yellow, sweet apple, ripening in August. About the most popular tree in the orchard with the children.

Twenty Ounce. Big, striped apple, known as Blessing or Red Streak. A heavy annual bearer of exceptionally good "pie timber." Nov. to Dec.

Tolman Sweet. A rather small, very hardy, leading commercial variety of sweet apple. Very valuable for its keeping and shipping qualities. Dec. to March

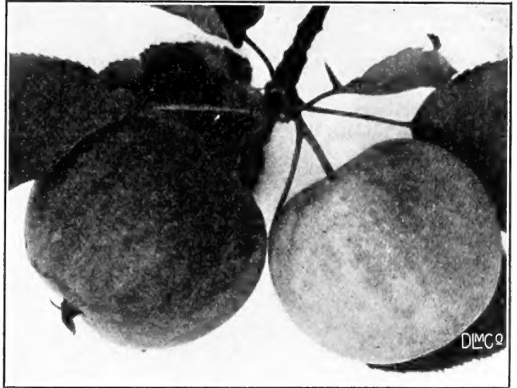
Wagener. Flattish, striped apple of very good quality. Is planted largely as a filler, for which it is ideally suited. Tree bears young and abundantly and is rather small and short-lived, rarely being profitable after reaching the age of 25 years. Is perhaps the best of all varieties for pollenizing McIntosh. Dec. to March.

Wealthy. A most profitable Fall apple of high quality. Bears young and heavily. Medium size. Striped. Oct. to Nov.

Wolf River. The big red and yellow apple that attracts so much attention on fruit stands and at fruit shows. Bears young and heavily. Very hardy, but quality is such as to make it only of culinary value. Dec. to Jan.

Yellow Bellflower. Fine for the home orchard, but not of much commercial value. Tree is hardy in our vicinity, but not in the more northern sections of New England. Fruit is golden yellow, conical and of a peculiarly delightful flavor. Dec. to Feb.

Yellow Transparent. The earliest good apple. Good size, nice quality. Tree very hardy and bears very young, often a year after planting. The planting of early apples has been neglected during the past few years, with a consequent increase in price of the fruit. Yellow Transparent should be one of the most profitable and may well be planted as a filler tree, as it attains only a small size. July.



Hyslop Crab Apple

Transcendent Crab. This beautiful red and yellow crab apple comes into bearing very young. Bears profusely. Sept.

Hyslop Crab. This is the old-fashioned deep red crab apple with beautiful gray bloom. One of the most popular of all. Sept. and Oct.

DWARF APPLE TREES

The demand for dwarf Apple trees has increased tremendously during the past few years. The trees come into bearing much earlier than standard trees, often the year after planting. The fruit from dwarf trees is usually large and of fine quality. This class of trees may be planted as orchard fillers or where space must be conserved. Plant about 20 ft. apart. We offer the following varieties at these prices:

2 yr. No. 1 trees, 85c. each, \$8.00 per 10.

Baldwin, Cortland, Delicious, Duchess, McIntosh, Northern Spy, Pound Sweet, Red Astrachan, R. I. Greening, Stayman Winesap, Sweet Bough, King, Wealthy, and Yellow Transparent.

PLUM TREES

There is just one fault with Plums. They are too easy to grow. And for this reason every farmer or land owner who does not have Plums from July to late September has only himself to blame.

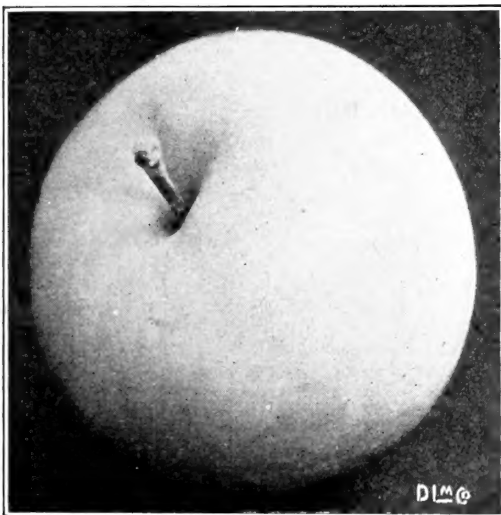
2 yr., 5 to 7 ft., 11-16 in. diameter., \$1.00 each, \$8.00 per 10, \$60.00 per 100.

2 yr., 4 to 6 ft., 5 1/4 in. diameter, 90c. each, \$7.00 per 10, \$50.00 per 100.

Note—5 or more of 1 variety at the 10 rate.

Abundance. A large, light pink Japanese plum of exceptionally fine quality, being very juicy. One of the earliest of the plums and is always in good demand. Especially good for home consumption. Early Aug.

Burbank. Japanese plum, most widely planted. Produces good crop. Fruit is large and deep red, of good quality. One of the finest for canning. Burbank is inclined to overbear and in some years should be thinned for best results. All plums do best if two or three varieties are planted. By all means do not plant Burbank alone or it will not bear. Sept.



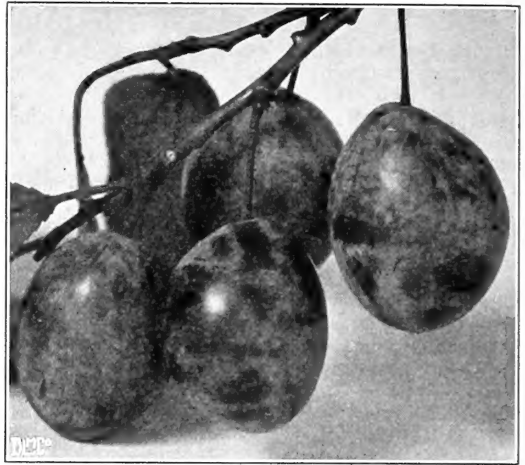
Yellow Transparent

PLUM TREES—Continued

Bradshaw. Is of European origin. Very large, reddish purple plum of exceptional quality and appearance. If placed on the market, Bradshaw would doubtless outsell any other plum, because of its handsome appearance. This variety is for dessert rather than for canning purposes. Ripens the last of Aug.

Green Gage. Has perhaps the highest quality of any plum grown. Bears young and heavily, and is about the highest priced plum on the market. As its name indicates, the color is a greenish yellow. Ripens in Sept.

Lombard. Most widely planted of all European plums. An exceptionally heavy yielder. Good size, dark, reddish-purple fruit. Equally good for dessert or canning. With the exception of Burbank, Lombard will probably yield more per acre than any other standard variety.



York State Prune



Burbank Plums (See page 5)

Red June. A Japanese variety, making a large, vase-shaped tree which yields a heavy crop of medium size dark red fruit. It is the earliest good plum, and while not of such high quality as some of the other varieties, in some cases it is the most profitable, on account of its extreme earliness. July.

Shiro. Another Japanese variety, of clear golden yellow color. Not quite as early as Red June. Fruit of exceptionally good quality. Aug.

Shropshire Damson. This is the old-fashioned deep blue preserving plum which has been grown in cultivation for over 2000 years. Not a dessert plum, as the fruit is acid, but it can be grown in regions where the temperature reaches 40 below zero.

York State Prune. The largest and best of the prunes. Probably the same as Fellenburg or Italian prune. Exceptionally sweet when fully ripe, and as the tree reaches maturity, bears very heavily. Color, deep blue. Ripens in late Sept.

PEAR TREES

Note.—5 or more of 1 variety at 10 rate, 50 or more at 100 rate.

	Each	10	100
Standard, 2 yr., 11-16 in., 5-7 ft. trees.....	\$1.00	\$9.00	\$70.00
Standard, 2 yr., 5/8 in., 4-6 ft. trees.....	.90	8.00	60.00
Dwarf Pears, 2 yr. No. 1.....	.85	7.50	

Pears can be easily grown in almost any location where the soil is not too light and where the temperature is not likely to drop to more than 30 degrees below zero. It should be borne in mind that with pears, it is usually necessary to plant two or more varieties, as most of them are not self-pollenizing. They respond readily to good cultivation and fertilization, and if well cared for, will come into bearing fairly young, usually within four to six years. For the impatient person who cannot wait for standard pears to come into bearing, the dwarf trees will prove most acceptable, as they generally start yielding within a year or two after planting. We believe it would be well if every home orchard contained pears which ripened over a season from August to December. Too many restrict their selection of varieties to the August and September sorts, perhaps not realizing that some of the very finest of them all are at their best in November.

Anjou. This is the very large, dark green pear which is not at its best until late December, and in good storage, may be kept longer than that. The quality is very good for a variety which can be kept so long, and is perhaps the latest of the really good pears now on the market.

Bartlett. This is the most popular pear grown, especially for market. The trees bear profitably quite young. The fruit usually brings a high price. When fully ripe, Bartlett is yellow, often with red cheek. Never plant Bartlett alone or it will not bear, as it is self-sterile.

PEAR TREES—Continued

Bosc. The very high quality, long-necked russet pear seen on the market so much from Thanksgiving to Christmas. The fruit always sells for a very high price. The trees of this variety should be well cared for, as they do not grow as well as the other varieties. Any especial attention given them is paid for by the exceptionally fine quality fruit. Nov. to Dec.

Clapp Favorite. This extremely popular pear is found in almost every yard in New England where attention is paid to fruit. This variety bears heavy crops of immense yellow fruit with red cheeks. The quality is very fine, and while the extreme productiveness of the variety sometimes "busts" the market in small towns, yet for home use it doubtless pays better dividends than any other variety grown, being equally good for canning and dessert. Pick just before ripe and ripen in the dark. Ripens last of Aug.

Duchess. A very large yellow pear with red cheek, which is exceptionally desirable on dwarf stock. Quality is very good. Season, Oct. to Nov.

Lawrence. A delicious medium-size pear; at its best before Thanksgiving. A really fine quality November pear; should be more widely planted.

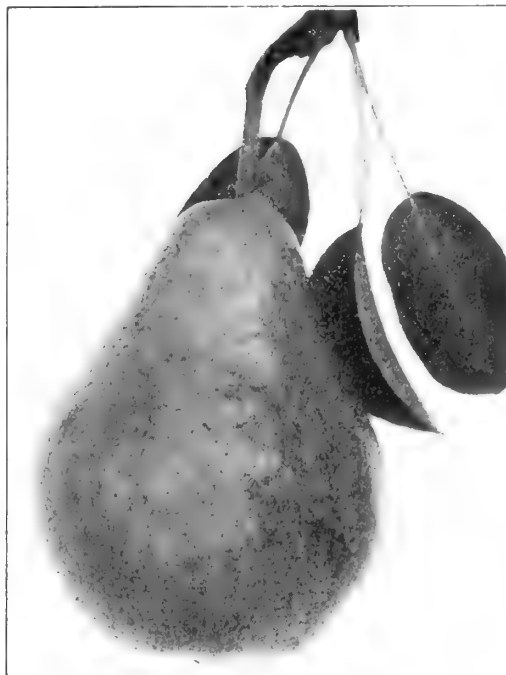
Seckel. The standard of quality among pears, bringing very high prices on the market. It will be necessary to plant a good many trees if you expect the fruit for market, as they prove so popular with the family for pickling or eating. Seckel runs to quality rather than to size. Season Oct.

Sheldon. A large, round, russet pear which is very sweet and juicy. On many an old New England farm, the Sheldon pear tree was likely to be the gathering place for the youngsters. Late Oct.

Vermont Beauty. A small to medium size yellow pear with red cheek. Very hardy and of exceptionally fine quality when fully ripe.

Worden-Seckel. This is a variety which approaches the Seckel in quality. Is considerably larger in size.

Dwarf Pears can be furnished in all varieties except **Bosc, Lawrence, Sheldon, and Vermont Beauty.**



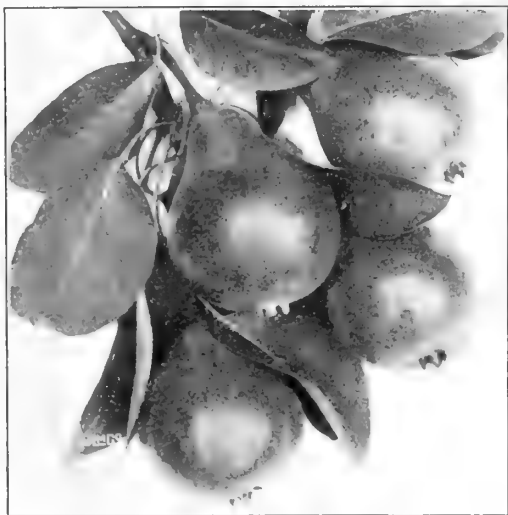
Bartlett Pear (See page 6)

NUT TREES

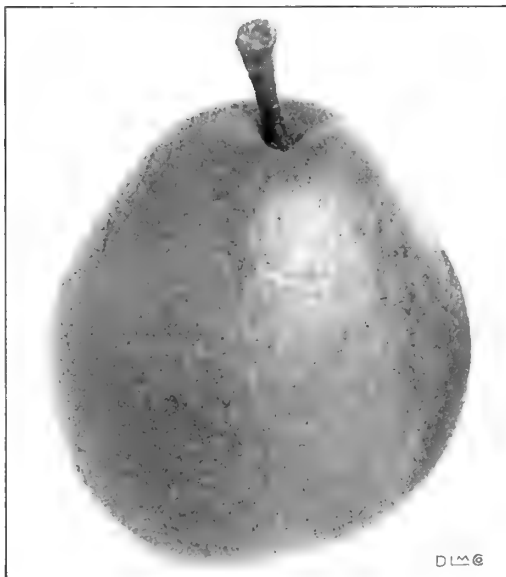
Note—5 or more of 1 variety at the 10 rate.

Butternut. A well-known northern nut tree from which so many thousands of barrels of rich, oily nuts are gathered each year. We offer a nice lot of 3-4 ft. trees, once transplanted, at 50c. each, \$4.00 per 10; 4-5 ft. at 60c. each, \$5.00 per 10; 5-6 ft. at 75c. each, \$7.00 per 10.

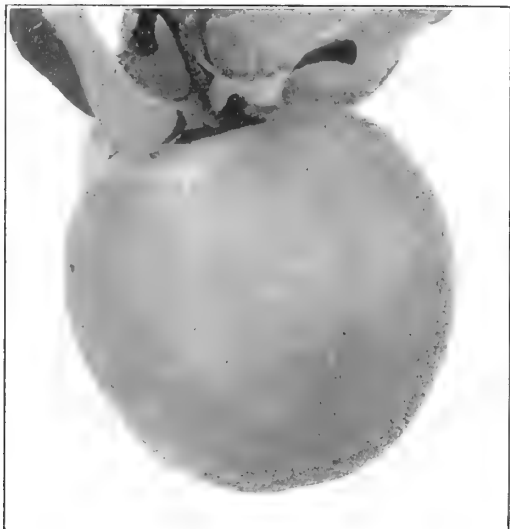
Black Walnut. Valuable timber tree of the central states. It is perfectly hardy in Vermont. 4-5 ft. at 60c. each, \$5.00 per 10; 5-6 ft. 75c. each, \$7.00 per 10.



Seckel Pears



Sheldon Pear



Orange Quince

QUINCES

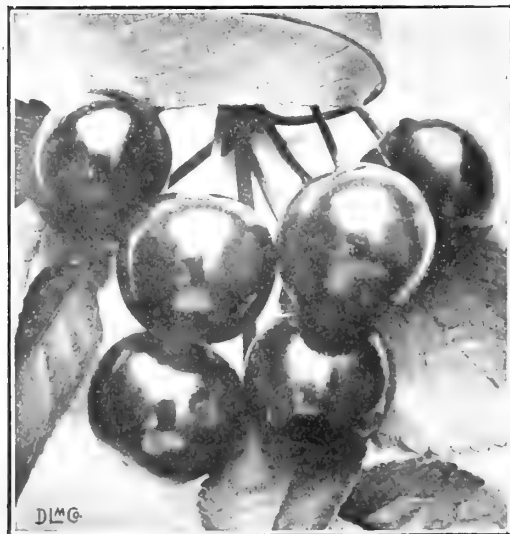
Note.—5 or more of 1 variety at the 10 rate.

2 yr., 4-6 ft., \$1.00 each, \$8.50 per 10.

Quinces, which used to be found in every garden, are now one of the most neglected of the tree fruits. They bear very young and are easy to grow, although the trees are often short-lived, owing to blight. The fact that they make the most delectable jelly of all fruits and are almost equally as good for preserves, in combination with sweet apples or pears, should restore them to every home orchard. We offer two varieties, as follows:

Orange. Large, round quince, of beautiful, golden yellow color. It is earlier than Champion, and ripens well as far north as central New England. Middle of Oct.

Champion. A large and handsome quince which often bears a year after planting. Excellent quality. Ripens the last of Oct.



Montmorency Cherries



Bing Cherries

CHERRY TREES

Note.—5 or more of 1 variety at 10 rate, 50 or more at 100 rate.

2 yr., 11-16 in., 4-6 ft., \$1.00 each, \$9.00 per 10.

2 yr., 5/8 in., 4-5 ft., 90c. each, \$8.00 per 10.

Note.—Sweet cherry trees are mostly self-sterile and two or more varieties should be planted to secure good results.

Black Tartarian. A large, nearly black sweet cherry. Quality good. Makes a large tree.

Bing. A dark red, sweet cherry of very large size. One of the most important commercial varieties. Succeeds well in eastern United States. Quality fine.

Early Richmond. An early red sour variety, bearing heavy crops annually. Ripens in June.

English Morello. Very late, sour cherry, ripening about the first of Aug. Fruit is deep red and quite acid. May be grown farther north than other cultivated cherries. Tree is rather dwarf, rarely attaining a height of more than 8 ft.

Gov. Wood. About the most reliable sweet cherry. Light yellow color, with red cheek and of excellent quality. One of the earliest of the cherries, ripening in strawberry time.

Montmorency. The leading commercial variety of sour cherry, being of large size, and of brilliant red color. Bears very heavy crops which ripen middle of July. The trees seem to be more resistant to disease than almost any other kind of cherry.

May Duke. One of the very earliest cherries. Large, red variety, intermediate between the sweet and the sour varieties. Excellent quality.

Napoleon. This is called the "Royal Ann" in the western states. It is one of the very largest of cherries and very sweet. Color is yellow with red cheek.

PEACH TREES

Note—5 or more of 1 variety at 10 rate, 50 or more at 100 rate

1 yr., 4-6 ft., 60c. each, \$5.00 per 10, \$30.00 per 100.
1 yr., 3-5 ft., 50c. each, \$4.00 per 10, \$25.00 per 100.

Belle of Georgia. A splendid white peach, ripening about the middle of Sept. and is hardy as far north as peaches can be grown successfully. Fruit is very large and of good quality. Practically freestone. One of the best shipping varieties and worthy of commercial planting.

Carman. The most popular white peach in the north. Large and of good quality. A fairly good keeper, ripening in late Aug. Freestone.

Champion. A very large, white peach of delicious flavor. Is not a good shipper, but should be in every home orchard. Ripens Aug. 15-25. Freestone.

Early Crawford. This is possibly the finest quality peach grown, and has been the standard of quality for more than 50 years. Is not a heavy bearer and requires liberal fertilization. Ripens middle of Sept. Freestone. Very large size when well grown. Yellow with brilliant red cheek.

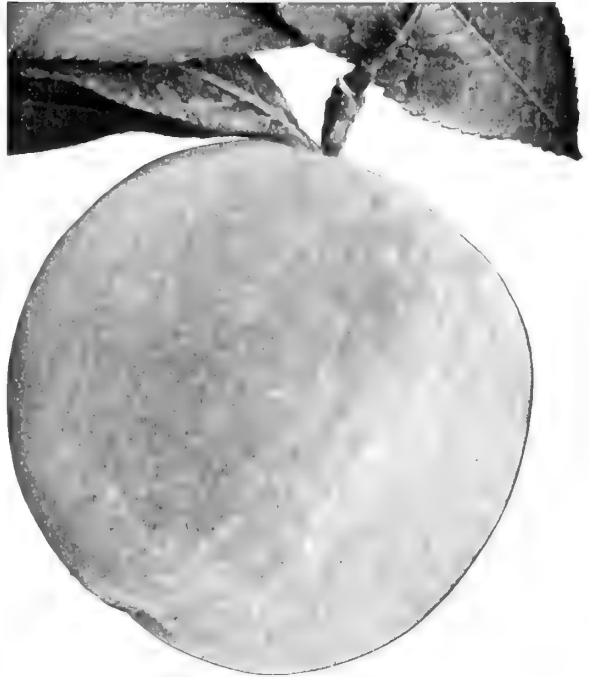
Elberta. Easily the leading yellow commercial peach and one of the hardiest. Bears heavily and is one of the best shippers, as well as an exceptionally good canning variety. Quality very good, but not equal to Early Crawford. Freestone.

Early Elberta. Very similar to Elberta but a couple of weeks earlier.

Greensboro. Very early white variety with red cheek. Juicy, and of fair quality. Ripens in early Aug. Clingstone.

J. H. Hale. About the largest of the peaches. Ripens a few days earlier than Elberta. A yellow variety. Freestone. J. H. Hale is self-sterile and must have another variety planted with it.

Rochester. A fine, large, yellow peach, ripening two weeks ahead of Early Crawford. We have not seen it in fruit, but it has been a very good seller during the last few years, and many claim it to be the most desirable yellow peach.



J. H. Hale

APRICOTS

Note—5 or more of 1 variety at the 10 rate.

Harris

Budd

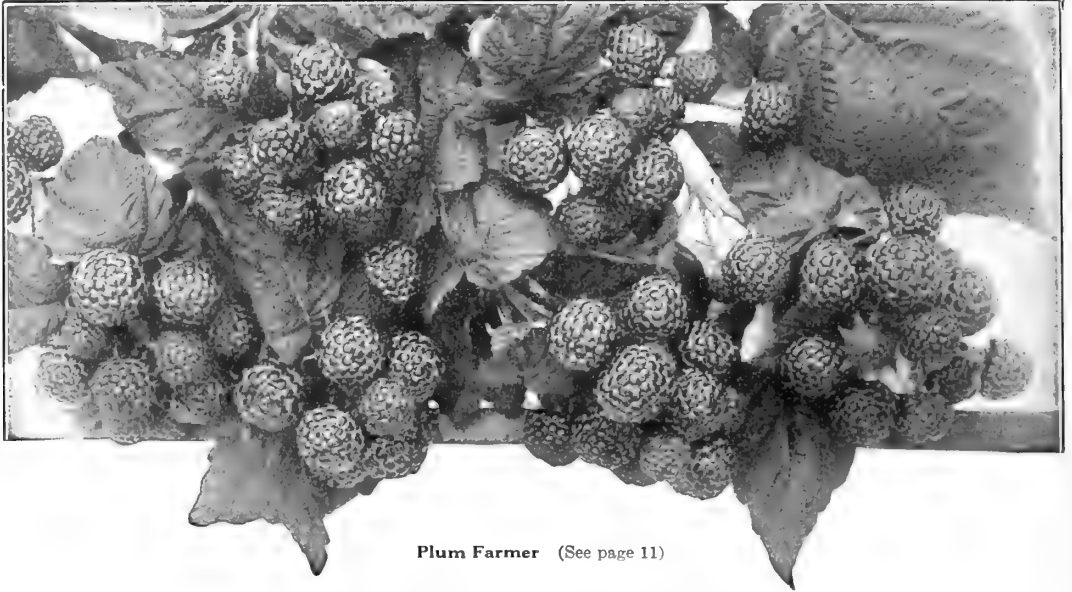
Moorpark

4-5 ft. trees, 75c. each, \$6.00 per 10

Too few people know that apricots are hardier than peaches and may be grown north of the peach belt. Give care similar to peaches and plant more than one variety, as apricots are not self-pollenizing. We offer leading varieties which ripen with us in late July. When fully ripe, apricots turn a bright golden color and drop to the ground without serious injury to the fruit. They are then extremely sweet and delicious.



Carman Peaches



Plum Farmer (See page 11)

SMALL FRUITS

RASPBERRY PLANTS

Raspberries are probably the most profitable of all the small fruits. They are pretty sure to mature a good crop, and the market is never fully supplied. Plant on good, well-drained soil, on a slope, if possible, and cultivate freely. Fertilize with chemicals and wood ashes rather than manure. Of the red varieties about 2400 to 3000 plants per acre are required, planted $2\frac{1}{2}$ to 3 feet apart in rows 6 feet apart. The black and purple varieties, planted 3 feet apart in rows 7 feet apart, take about 2000 plants per acre. Our raspberry plants this year will be the finest we have ever had to sell. We have spent several years in roguing out every diseased plant we could find in our nurseries.

We would refer you to Prof. M. B. Cummings of the University of Vermont, Prof. R. Van Meter of the Massachusetts Agricultural College, and to W. H. Darrow, Extension Pomologist, of Storrs, Conn., in regard to the quality of plants we are now growing.

The only trouble we have with our raspberry plants is in growing a sufficient quantity to meet the demand. Fall planting is being practiced more extensively each year. Consequently each Spring finds us with a rather short supply, and we therefore advise early ordering of what raspberry plants you will require for the coming season.

Cuthbert. We have a splendid lot of disease-free plants for Spring sale. The leading variety. Canes tall, vigorous, and succeeds well on light soil where other varieties might fail. Berries deep red, conical, and finest quality. An abundant cropper. 75c. per 12, \$1.25 per 25, \$4.00 per 100, \$30.00 per 1000.

Columbian. The most popular purple raspberry grown. Immensely productive. Fruit large, good quality and fine for canning. Tip plants, \$1.00 per 12, \$1.75 per 25, \$5.00 per 100, \$37.50 per 1000.

Golden Queen. A high quality raspberry, identical with Cuthbert, except in color, which is rich golden yellow. Plants, \$1.00 per 12, \$1.75 per 25, \$5.00 per 100.

Herbert. Rapidly becoming one of the leading varieties of red raspberries, owing to its apparent immunity to the mosaic disease, as well as to crown gall. Fruit is very large and of excellent quality. In addition to these desirable qualities, it is also one of the very hardiest. Herbert does not succeed well if planted on low land near rivers or lakes. 75c. per 12, \$1.50 per 25, \$5.00 per 100, \$37.50 per 1000.



Cuthbert Raspberries

RASPBERRY PLANTS—Continued

Idaho. A rather unusual sort of raspberry. The canes grow erect and in season are literally loaded with exceptionally large, dark red, rather acid berries. While we have no record of the yield of Idaho, it is one of the very heaviest croppers and one of the easiest to grow, but it will not sell on the market for as good a price as Cuthbert and other finer quality sorts. Absolutely hardy. Would be very valuable to grow for a market where quantity at a lower price is desired. 75c. per 12, \$1.50 per 25, \$5.00 per 100, \$40.00 per 1000.

June. One of the most profitable varieties grown. Canes erect and very vigorous, attractive color, and spineless. Ripens last of June and is a heavy yielder. Fruit good quality, very large and firm. Color light red. 75c. per 12, \$1.50 per 25, \$5.00 per 100, \$37.50 per 1000.

King. We have added King to our list of varieties, in response to many requests from people who want an early raspberry that will succeed well on light soils. King seems to meet these requirements. Also very hardy. Fruit good size and quality. Price same as Herbert.

Latham. This remarkable hardy raspberry from Minnesota certainly made good in the fields in Connecticut, where we supplied the plants. They yielded over 5000 quarts to the acre, according to the records of the Connecticut Extension Department. The plants are of vigorous growth and perfectly hardy. The berries are large, light in color, good flavor, and late. Like King, Latham succeeds well on soils too light for other varieties. While not immune to mosaic, Latham is so resistant, its yielding capacity is scarcely affected by the disease. We recommend Latham for planting

in those sections where other varieties have been destroyed by mosaic. \$1.00 per 12, \$1.75 per 25, \$5.50 per 100, \$45.00 per 1000.

Marlboro. With the exception of Cuthbert, Marlboro has been the most widely grown variety throughout the country. The canes grow to a height of 3-5 ft., are stiffly erect, and hold their heavy crops well off the ground, without staking or wiring. It is one of the earliest varieties. The berries are round, of good flavor, and most attractive in appearance. It is an excellent shipper. This variety must be grown on medium to heavy soil, and well fertilized. It is immune to crown gall. Price same as Cuthbert.

Plum Farmer. The most popular black raspberry. Large, early and fine quality. 75c. per 12, \$4.00 per 100, \$30.00 per 1000.

St. Regis. The much advertised everbearer. A commercial variety south of New York, but suitable for home use only in New England. Of good quality but not a heavy cropper. Very early and usually bears a small Fall crop. Berries rather small. Another variety which is practically immune to mosaic. Price same as Cuthbert.

BLACKBERRY PLANTS

Culture same as for raspberries. Avoid frosty locations.

Blowers. A giant blackberry which yields enormous crops of immense berries. Is not entirely hardy in northern New England and not recommended for planting where peaches cannot be grown. One of our customers in Connecticut reports that his Blowers attained a height of 18 ft. and were loaded with immense berries which found a ready market at 40c. per qt. \$1.00 per 12, \$1.50 per 25, \$5.00 per 100, \$35.00 per 1000.

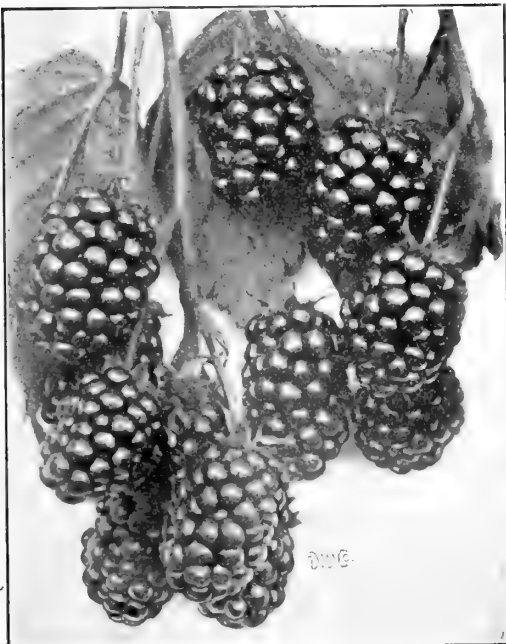
Snyder. The safest variety to plant in the cold sections, apparently standing 30 degrees below zero without injury. This variety is a good grower, but appreciates good care. If allowed to ripen on the bushes, the berries are sweet and good, but should not be picked until fully ripe. The plant yields immense crops, and if you are confined to one variety for commercial planting in northern New England, Snyder is recommended. 75c. per 12, \$1.25 per 25, \$4.00 per 100, \$30.00 per 1000.

DEWBERRIES

Earlier than blackberries and the fruit is fully as large. The young canes should be allowed to lie on the ground during the winter and trained to stakes the following spring. The leading varieties of dewberries are:

Lucretia. The oldest commercially cultivated variety. Fruit large, later than Mayes, but perhaps a better shipper. 75c. per dozen, 25 for \$1.00, \$3.50 per 100, \$25.00 per 1000.

Mayes. Very large, sweet and early. An ideal home garden variety. Price same as for Lucretia.



Blowers Black berries

CURRENTS and GOOSEBERRIES

With an ever-increasing scarcity of currants and gooseberries, the growing of these small fruits should prove unusually profitable. Yields of 5000 to 10,000 quarts per acre are easily possible, and the price for the past few years has ranged from 10c. to 20c. per quart, wholesale.

Currants and gooseberries will grow in any good rich soil and yield amazingly well. Fertilize them heavily with manure supplemented with acid phosphate. Do not plant them on steep hillsides as they will be likely to tip over after a year or two.

Plant currants and gooseberries 4 by 7 ft. or 5 by 5 ft., and if ground is very rich, they may be set closer. Cultivate thoroughly during Spring and Summer, and prune out wood more than two or three years old.

Notice.—Federal quarantines have been modified so that currants and gooseberries may be shipped to most Eastern States. A few states, however, have certain areas wherein their planting is prohibited.

CURRENTS

Perfection. A very popular large red currant. 2 yr. plants, 40c. each, \$3.50 per 10, \$25.00 per 100.

Red Cross. Early and sweet. 2 yr. plants, 25c. each, \$1.75 per 10, \$15.00 per 100.

Cherry. Most widely planted currant. Price same as Red Cross.

Wilder. Strong, upright grower. Popular. Price same as Red Cross.

White Grape. Best white variety. Popular for table use. Price same as Perfection.

GOOSEBERRY PLANTS

Downing. Most popular gooseberry. Color green, medium size, quality best. 2-yr. plants. 25c. each, \$2.00 per 10, \$18.00 per 100.

Red Jacket. Color pale red. Larger than Downing. Price same.

Oregon Champion. Yellowish green, immensely productive. Sweet. Price same as Downing.



Perfection Currants



Worden Grapes

GRAPES

Plant on well drained soil and fertilize well with manure and acid phosphate. Write the U. S. Dept. of Agriculture, at Washington for bulletins on grape culture.

Brighton. Very large, dark red variety of fine quality. Midseason. 2 yr. vines, 30c. each, \$2.50 per 10, \$22.50 per 100.

Champion. A very early large black grape for the north. 25c. each, \$2.00 per 10, \$15.00 per 100.

Concord. The standard blue grape. 2 yr. vines. 25c. each, \$1.75 per 10, \$12.00 per 100.

Campbell Early. A giant black grape of finest quality. Bunches sometimes weigh 2 lbs. 2 yr. vines. 35c. each, \$3.00 per 10, \$27.50 per 100.

Delaware. Best quality red grape. Small but delicious. Early. Price same as Brighton.

Diamond (Moore's Diamond). A large white grape of delicious quality. Bunches are often shouldered. 25c. each, \$2.25 per 10, \$18.00 per 100.

Green Mountain. A small early green grape of exceptionally high quality. 50c. each, \$4.50 per 10.

Lucile. A fine early red grape of good quality. Bears young and heavily. Earlier and twice as large as Delaware. Price same as Champion.

Moore Early. One of the best grapes for the North. Nearly a month earlier than Concord, Color blue. Price same as Brighton.

Niagara. The most popular white grape. 25c. each, \$2.00 per 10, \$18.00 per 100.

Worden. Similar to Concord but a little earlier. Price same as Niagara.

Wyoming. Very hardy red grape. Much earlier than Delaware. Try this in the North where other grapes fail. Price same as Niagara.

STRAWBERRY PLANTS

For cultural directions of strawberries we refer you to Farmers Bulletins Nos. 901, 979, and 1028, of the United States Department of Agriculture.

Abington. A very large, light colored berry of uniform size and good quality. Planted largely as a pollinizer for Sample. \$1.25 per 100, \$10.00 per 1000.

Howard 17. The leading commercial variety of New England at the present time. Fruit light red, large and good quality. Early. Ideal for sandy soils and river bottoms, but inferior to Sample on clay land. Very resistant to drought. 50c. per 25, \$1.50 per 100, \$12.00 per 1000.

Mastodon. The best everbearing variety of strawberry that is now commercially available. Larger than Superb and a better plant maker. Quality excellent. Bears on both mother plant and runner. We are obliged to discard both Progressive and Superb in favor of Mastodon. 25 plants \$1.00, \$3.00 per 100.

Success. A very large, early variety. Fruit light colored and good quality. A strong grower. Price same as Sample.

Warfield. Medium size and midseason. Color deep red clear through. An excellent shipper and canner. \$1.25 per 100, \$8.00 per 1000.

Sample. The great market berry of New England that easily held first place among commercial varieties until the introduction of Howard 17. Our experience has been that Sample does best on the hills and Howard 17 excels along the river valleys. Sample is imperfect flowering and should have one of the perfect flowering varieties planted with it for pollinizing. The berries are very large and uniform, holding up well till the end of the season. Immense cropper. Midseason. \$1.25 per 100, \$10.00 per 1000.

Senator Dunlap. An all-round variety. Dark red pointed berry of excellent quality.

Grows almost anywhere. Early to midseason. \$1.25 per 100, \$8.00 per 1000.



Downing Gooseberries
(See page 112)



POT GROWN STRAWBERRY PLANTS

Many people think that best results are obtained by planting pot-grown strawberry plants in August and September, as these plants will bear a fairly good crop the following season. We will have available for delivery August and September, 1929, pot grown plants of leading varieties. Write us for varieties and prices.

Note—We do not sell, nor advise planting, strawberry runner plants in the late Summer and Fall.

RHUBARB

Rhubarb will grow in almost any soil, but responds readily to heavy fertilization.

Giant Linnaeus. Divided roots, 15c. each, \$1.00 per 10, \$8.00 per 100.

Early Scarlet, or Strawberry Rhubarb. Scarlet stalks and fine quality. 15c. each, \$1.00 per 10, \$8.00 per 100.

ASPARAGUS

No part of the garden will yield more profit with less trouble than the Asparagus bed, and as a commercial crop it is near the top. For planting instructions, write your State College or the U. S. Dept. of Agriculture at Washington. We offer only the Martha Washington which is easily the leading variety.

Martha Washington. The famous giant rust-proof variety, originated by the Dept. of Agriculture. Price of 1 yr. plants, 60c. per 25, \$1.50 per 100, \$10.00 per 1000; 2 yr. plants, 75c. per 25, \$2.00 per 100, \$15.00 per 1000.

Mary Washington. We have available a few thousand 2-yr. plants of this variety at the same price as for Martha.



Asparagus
Martha Washington



Shade and Flowering Trees

ACER

Red Maple. *A. rubrum.* Native tree, covered in early Spring with clusters of tiny, feathery flowers, ranging in color from yellow to bright red. Foliage turns brilliant colors in the Fall. 6 to 8 ft. \$1.50 each, \$13.50 per 10; 8 to 10 ft., \$2.00 each, \$18.00 per 10; 1½ to 2 in. diameter, \$3.00 each, \$28.00 per 10.

Norway Maple. *A. platanoides.* A rapid growing tree, symmetrical in form. Its leaves change in the Autumn to a beautiful rich yellow. Useful for a street tree or for avenues or lawns. 6 to 8 ft. \$2.00 each, \$18.00 per 10, 8 to 10 ft., \$3.50 each, \$30.00 per 10.

Striped Maple. *A. pennsylvanicum.* A very ornamental small tree, the bark of which is striped in green and white. 4 to 6 ft., \$1.00 each, \$9.00 per 10; 6 to 8 ft. \$1.50 each, \$13.50 per 10.

Skinnners Cutleaf Maple. Delicately cut, bright green leaves. An improvement over other cutleaf maples. Like all cutleaf trees, they are exceptionally graceful and distinctive. Fine for lawns and conspicuous places. 6 to 8 ft., \$1.75 each, \$16.00 per 10; 8 to 10 ft. \$2.25 each.

Sugar Maple. *A. saccharum.* This is the maple which grows to such an extent in Vermont, and which supplies the country with maple syrup. Aside from its utility, it is this tree, also, which constitutes the best of shade trees, attaining great size, and living to a good old age. The foliage turns, in Fall, to brilliant shades of orange and yellow. 6 to 8 ft., \$1.60 each, \$14.00 per 10; 8 to 10 ft., \$2.00 each, \$17.50 per 10; 10 to 12 ft. \$3.00 each, \$27.50 per 10.

AESCULUS

Horsechestnut. *A. hippocastanum.* A large, handsome tree, native of Europe. Leaves with five or six leaflets. Flowers in upright panicles, white, tinged with red. Pods prickly, enclosing large nuts. 6 to 8 ft., \$2.75 each.

AMYGDALUS

Flowering Peach. *A. persica flore pleno.* Wherever common Peaches grow, the wonderfully showy Flowering Peach should succeed. 4 to 5 ft. trees of either double red or white, at \$1.00 each, \$9.00 per 10.

BETULA

Canoe Birch. *B. papyrifera.* The native white birch of Vermont, which attains such a large size. Should be planted extensively. Looks well planted against dark hemlocks or other evergreens. 6 to 8 ft. \$1.50 each, \$12.50 per 10; 8 to 10 ft. \$2.00 each, \$18.00 per 10; 10 to 12 ft. \$3.00 each.

Cutleaf Weeping Birch. *B. alba laciniata.* Graceful, pendant growth and finely cut leaves. Slender, yet vigorous. White bark, 5 to 6 ft. \$3.00 each.

Black Birch. *B. lenta.* Makes a large, shapely tree with attractive light brown catkins during the Fall and Winter. Wintergreen extract is made from the bark of the Black Birch. 4 to 6 ft. \$1.00 each, \$9.00 per 10.

Yellow Birch. *B. lutea.* Papery, silvery-gray bark with dull, yellow shadings. Makes a large, attractive tree. 4 to 6 ft. \$1.00 each, \$9.00 per 10.



Sugar Maple (*Acer saccharum*)



Amygdalus (See page 14)

CATALPA

Western Catalpa. *C. speciosa.* A large shade tree; big, fragrant blossoms in long, pyramidal clusters of purple and white. 6 to 8 ft. \$1.00 each, \$9.00 per 10; 8 to 10 ft. \$1.50 each, \$13.50 per 10; 10 to 12 ft. \$3.00 each.

Umbrella Catalpa. *C. bungei.* The grafted, globe-shaped form of the Catalpa so commonly used in formal plantings. 2-yr. grafts, 6 to 8 ft. \$3.00 each.

CERCIS

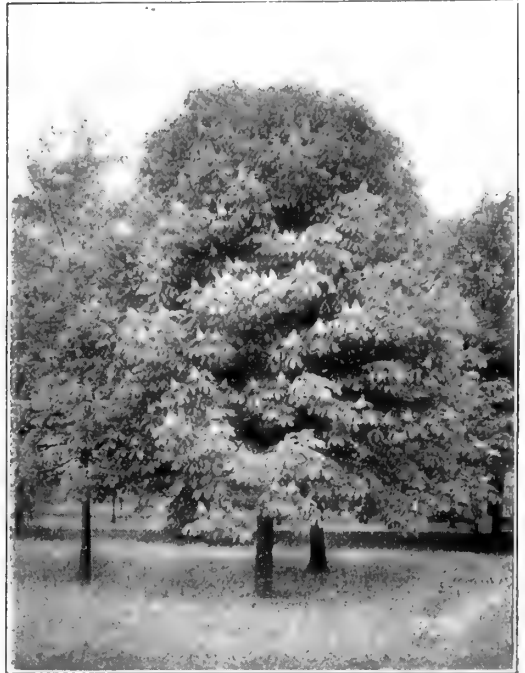
Judas Tree. *C. canadensis.* In early spring the leafless branches of this tree are covered with rich, purple flowers, so that the tree itself looks as if it had turned into a flower. 4 to 5 ft., \$1.50 each, \$12.50 per 10; 2 to 3 ft., 75c. each, \$7.00 per 10.

Flowering Dogwood (*Cornus florida*)

CORNUS

Flowering Dogwood. *C. florida.* One of the loveliest of the flowering trees. Bears large, single, pure white flowers in May. Hardy and reliable, and having the reputation of being one of the best for landscape planting. Classed as a small tree, or large shrub. 2 to 3 ft. \$1.00 each, \$9.00 per 10; 3 to 4 ft. \$1.25 each, \$10.00 per 10.

Pink-flowering Dogwood. *C. florida rubra.* Strikingly beautiful, especially when planted with the white variety. Beautiful against dark evergreens. Large, rose-pink flowers. 2 to 3 ft., \$3.00; 18 to 24 in. \$2.00.

Horsechestnut (*Aesculus hippocastanum*)

CRATAEGUS

Washington Thorn. *C. cordata.* A tall growing Thorn, valued for Autumn coloring of its leaves and red fruit. 2 to 3 ft. \$1.00 each, \$9.00 per 10.

White Hawthorn. *C. coccinea.* Native tree bearing in May clusters of graceful flowers like pure white apple blossoms, having many conspicuous stamens, followed by scarlet fruit, which attracts birds. 2 to 3 ft. \$1.00 each, \$9.00 per 10; 3 to 4 ft. \$1.50 each.

Paul's Scarlet Thorn. *Crataegus oxycantha, Var. pauli.* Large shrub or small tree, growing as high as 15 feet. The flowers are bright scarlet and very double. Price, each, 3 to 4 ft. \$1.50; 4 to 5 ft. \$2.00 each, \$17.50 per 10.

Pink English Hawthorn. *Crataegus monogyna rosea.* Double pink flowers. Price, each 2 to 3 ft., \$1.00; 3 to 4 ft., \$1.50.

FAGUS

Beech. *F. americana*. One of the most beautiful and picturesque shade trees. Bark an even rich gray. Tree low-branched and very long-lived. 2 to 3 ft. 50c. each, \$4.50 per 10; 3 to 4 ft. 75c. each, \$7.00 per 10.

FRAXINUS

Ash. *F. americana*. Valuable shade tree. Almost immune to insect pests and disease. Rapid growing. 4 to 6 ft. 75c. each, \$7.00 per 10; 6 to 8 ft. \$1.25 each, \$10.00 per 10; 8 to 10 ft. \$2.00 each.

HALESIA

Great Silverbell. *H. tetraptera*. A small tree, hung with white, bell-shaped flowers in Spring. Very beautiful. 2 to 3 ft. \$1.00 each.

LARIX

American Larch, or Tamarack. *L. laricina*. The picturesque American Larch or Tamarack. The only native conifer that sheds its needles in the Fall. Attains a height of 80 ft. Prefers moist land. 3 to 4 ft. \$1.00 each, \$9.00 per 10; 4 to 5 ft. \$1.25 each, \$11.00 per 10.

MALUS

Bechtel-flowering Crab. *M. ioensis* var. *bechteli*. One of the most beautiful flowering crab trees. Delicate, shell-pink, semi-double blossoms like miniature roses. 2 to 3 ft. 90c. each, \$8.00 per 10; 3 to 4 ft., \$1.50 each, \$13.50 per 10; 4 to 5 ft. \$2.00 each, \$18.00 per 10.

Red-flowering Crab. *M. niedzwetzkyana*. Dark pink flowers and edible red fruit. Very handsome. 4 to 5 ft. \$1.50 each.

M. arnoldiana. A bushy tree, as wide as it is high. Flowers pink, in clusters on 3-in. stems. Single or semi-double. By many considered the finest crab. Attains a height of 20 ft. 2 to 3 ft. \$1.00 each, \$9.00 per 10; 3 to 4 ft. \$1.50 each; 4 to 5 ft. \$2.00 each.



Bechtel-flowering Crab (*Malus ionensis* var. *Bechteli*)



White Hawthorn (*Crataegus coccinea*) (See page 15)

M. atrosanguinea. Of the same habit of growth as the above. A marvelous sight in bloom. The flowers are a glorious shimmering pink, almost hiding the tree. Good as a hedge plant. Even the smallest tree blooms freely. 2 to 3 ft. \$1.00 each, \$9.00 per 10; 3 to 4 ft. \$1.50 each; 4 to 5 ft. \$2.00 each.

MORUS

Russian Mulberry. *M. tatarica*. Small tree, bearing reddish-black, edible berries, attractive to birds. Often planted in cherry orchards to keep the birds away from the cherries. 4 to 6 ft. 75c. each, \$6.00 per 10.

PLATANUS

Sycamore, or Buttonwood. *P. americanus*. Widely planted tree. The bark is picturesquely shaded with gray and white. 6 to 8 ft. \$1.75 each.

POPULUS

Carolina Poplar. *P. eugeni*. Very rapid growing tree. Planted for quick effects. 8 to 10 ft. 75c. each, \$7.00 per 10; 10 to 12 ft. \$1.00 each, \$9.00 per 10; 12 to 14 ft. \$1.75 each.

Lombardy Poplar. *P. nigra*, var. *italica*. A tree extensively used in landscape planting. Dense, columnar growth. 6 to 8 ft. \$1.00 each, \$9.00 per 10; 8 to 10 ft. \$1.25 each, \$10.00 per 10.

PRUNUS

Pin Cherry. *P. pennsylvanicum*. A small, rapid-growing tree, attaining a height of 20 ft. White flowers borne profusely in early Spring and followed by bright red fruit. 3 to 4 ft. 40c. each, \$3.50 per 10; 4 to 6 ft. 60c. each, \$5.50 per 10; 6 to 8 ft. 90c. each, \$8.00 per 10; 8 to 10 ft. \$1.15 each, \$10.00 per 10.

Purple-leaved Plum. *P. pissardi*. Conspicuous for its bronze-purple leaves throughout the season. 4 to 5 ft. \$1.00 each, \$9.00 per 10.

PRUNUS—Continued

P. subhirtella pendula. *Japanese Weeping Cherry.* At last we have available a limited number of this beautiful flowering cherry. Light pink. While they last we will sell 4 to 5 ft. trees at \$5.50 each. No discount for larger quantities.

QUERCUS

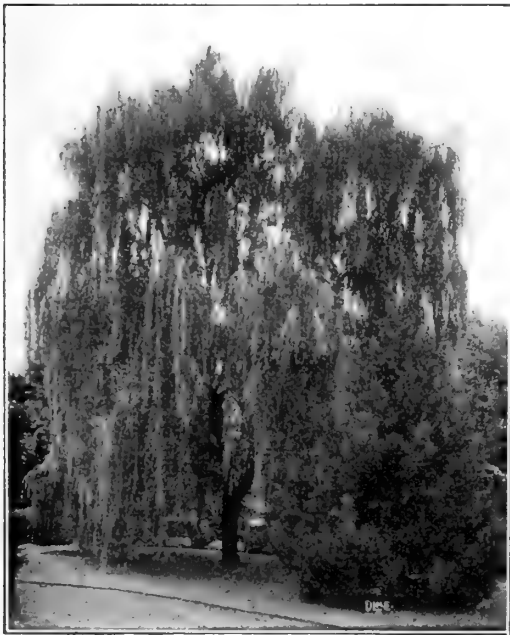
White Oak. *Q. alba.* Native oak with rough, shaggy bark. Attains an immense size and yields edible nuts. 3 to 4 ft. trees \$1.00 each.

Pin Oak. *Q. palustris.* One of the more attractive oaks, native to Pennsylvania and southward. Leaves are deeply cut and are very highly colored in Autumn. 6 to 8 ft. \$2.50 each.

Red Oak. *Q. rubra.* The most common oak in New England, and one which attains a size of 6 ft. or more in diameter, with uniformly good shape. Perhaps the most rapid growing of the oaks. 3 to 4 ft. trees \$1.00 each, 4 to 6 ft. \$1.50 each.

ROBINIA

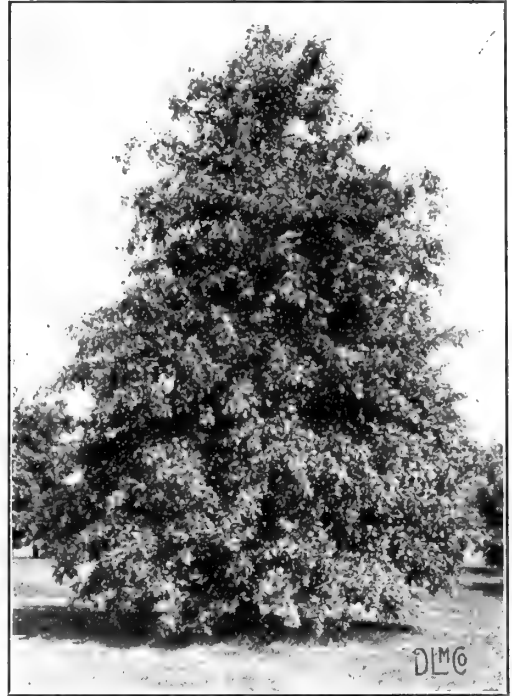
Black Locust. *R. pseudoacacia.* Rapid growing tree, the wood of which is resistant to decay. Drooping panicles of fragrant, creamy-white flowers in June. 6 to 8 ft., \$1.50 each, \$13.50 per 10.

Weeping Willow (*S. dolerosa*)

SALIX

Weeping Willow. *S. dolerosa.* For waterside planting. 8 to 10 ft., \$1.25 each, \$10.00 per 10.

Laurel-leaved Willow. *S. pentandra.* Dark, glossy green leaves. Used as a tall hedge or as single specimens. Cannot be recommended too highly. 6 to 8 ft., 75c. each, \$6.00 per 10, \$55.00 per 100; 4 to 6 ft., 50c. each, \$4.50 per 10, \$40.00 per 100; 8 to 10 ft. heavy trees, \$2.50 each.

Pin Oak (*Quercus palustris*)

SORBUS

European Mountain Ash. *S. aucuparia.* Small tree, attractive for its umbels of orange-scarlet fruit. Compound leaves. 4 to 6 ft. \$1.25 each, 6 to 8 ft. \$2.00 each.

TILIA

Linden, American Basswood. *T. americana.* Large, dense, round-headed tree. When in blossom in July the fragrance may be detected many rods away. 4 to 6 ft. \$1.00 each; 8 to 10 ft. \$3.00 each.

ULMUS

American Elm. *U. americana.* Shade tree of rapid growth, eventually reaching an enormous height and size. Some of the most beautiful streets in America are lined with these venerable trees, their arched branches meeting overhead. Unequaled for street or driveway planting. 6 to 8 ft. \$1.50 each, \$12.50 per 10; larger size quoted on request.

Moline Elm. A distinct new elm of fastigate growth. Leaves light green with shiny surface. 6 to 8 ft. \$2.00.

Vase Elm. A vase-shaped grafted form of the American elm. 5 to 6 ft. \$1.50 each, \$14.00 per 10.

Dwarf Asiatic Elm. *Ulmus pumila.* While this is claimed to be a rapid grower in the West, it is apparently a true dwarf with us. Globe shape. 4 ft. trees \$1.50 each.



CONIFEROUS EVERGREENS

The marvelous beauty of the coniferous evergreens and the wide varieties of uses for them is appreciated more each year. There are, however, certain precautions which must be observed if they are to be grown to perfection.

First, they must never be allowed to dry out, as an evergreen once dried out will seldom recover.

Secondly, if the season is dry or windy, the tops should be kept sprinkled until the roots are re-established. Most so-called winterkilling of evergreens is caused by Spring winds from the South causing the moisture to evaporate from the tops while the roots are still frozen so tightly that they cannot draw enough water from the ground to replace it. Frequent sprinkling in early Spring will help prevent the burning or so-called winter injury.

Thirdly, evergreens and canines should not be allowed to associate, and a low fence should be erected around dwarf evergreens to keep all dogs at a safe distance as they will certainly kill all lower branches if opportunity is given.

ABIES—FIR

Silver Fir. *Abies concolor*. Symmetrical, rapid growing trees with long blue-gray needles with a frosted appearance. Grows to 80 feet or more. 1½ to 2 ft. trees, \$3.50 each; 2 to 2½ ft. \$5.00 each.

Balsam Fir. *A. balsamea*. The fragrant Balsam of the northern woods. Symmetrical in form. Blue-green. 12 to 18 in. 75c. each, \$6.00 per 10; 18 to 24 in. \$1.25 each, \$10.00 per 10; 2 to 3 ft. \$2.00 each, \$17.50 per 10; 3 to 4 ft. \$3.00 each, \$27.50 per 10.

CHAMAECYPARIS—Retinospora

Green-plumed Cypress. *C. plumosa*. Tall, pyramidal shape; feathery, green-plumed foliage. Stands shearing. For foundations. 18 to 24 in. \$2.00 each, \$18.00 per 10; 2 to 3 ft. \$3.50 each.

Golden-plumed Cypress. *C. plumosa aurea*. Rich golden green. 18 to 24 in. \$2.00 each, \$18.00 per 10; 2 to 3 ft. \$3.50 each.

Thread-leaf Cypress. *C. filifera*. Finely cut, pendulous growth. Bronze green in color. 18 to 24 in. \$3.25 each.

C. squarrosa veitchii. Fine, feathery foliage of soft bluish-green. 18 to 24 in. \$2.50 each.

C. pisifera. Roughly pyramidal in outline. Distinct. 18 to 24 in. \$2.00 each, \$18.00 per 10; 2 to 3 ft. \$3.00 each



Silver Fir (*Abies Concolor*)

JUNIPERUS

Common Spreading Juniper. *J. canadensis.* Silvery-green, low growing, and of spreading growth. For rockery or foreground planting. 12 to 18 in. \$1.00 each, \$8.00 per 10; 18 to 24 in. \$1.50 each, \$12.00 per 10; 2 to 3 ft. \$2.50 each, \$22.50 per 10; 3 to 4 ft. \$4.00 each.

Savin Juniper. *J. sabina.* Dark green, graceful in form. Dwarf. Good for foundation plantings. 18 to 24 in. \$3.50 each, \$30.00 per 10; 12 to 18 in. \$2.00 each, \$18.00 per 10.

Red Cedar. *J. virginiana.* Tall, dense columnar in habit. Dark green. Invaluable for landscape planting. 2 to 3 ft. \$2.00 each; 3 to 4 ft. \$4.50 each.

Irish Juniper. *J. communis, var. hibernica.* Dense, columnar in form; glaucous green. For formal plantings. 18 to 24 in. \$1.50 each.

Tamarix Savin. *J. sabina tamariscifolia.* A very low-growing evergreen of highly artistic form and coloring. Silvery bluish green. Useful for edging evergreen plantings, for banks or rockeries. 12 to 18 in. \$2.50 each, \$20.00 per 10; 18 to 24 in. \$3.00 each

Spiny Greek Juniper. *J. excelsa stricta.* Silvery, blue-green foliage. Compact, pyramidal form. Ideal for low evergreen plantings. 15 to 18 in. \$2.50 each.

Meyer's Juniper. *J. squamata meyeri.* A new introduction. Foliage blue-green with iridescent reddish hues. Growth low, dense, spreading. For rockeries, or low evergreen planting. 12 to 18 in. \$5.00 each.

Pfitzer's Juniper. *J. chinensis pfitzeriana.* Low-growing, with spreading, nodding, plummy growth. Gray green in color. Ideal for rockeries, foundation plantings, or the foreground of evergreen plantings. 12 to 18 in. \$2.00 each, \$18.00 per 10; 18 to 24 in. \$3.25 each, \$30.00 per 10; 2 to 2½ ft. \$4.00 each.

PICEA—Spruce

Blue Spruces. We will have none to offer before Fall, 1929.

Norway Spruce. *P. excelsa.* Rapid growing tree. used for windbreaks. Long pendulous branches. Deep green. 18 to 24 in. \$1.50 each, \$12.50 per 10; 2 to 3 ft. \$2.00 each, \$18.00 per 10; 3 to 4 ft. \$3.00 each, \$28.00 per 10.

White Spruce (*Picea alba*)Pfitzer's Juniper (*Juniperus chinensis pfitzeriana*)

White Spruce. *P. alba.* A shapely densely growing tree of bluish green, often rivaling the Colorado Blue Spruce in color. 12 to 18 in. \$1.25 each, \$10.00 per 10; 1½ to 2 ft. \$1.75 each, \$16.00 per 10; 2 to 3 ft. \$2.25 each, \$20.00 per 10.

Red Spruce. *P. rubra.* Native tree. Exceptionally hardy. Dark, rich green. Graceful and symmetrical. 2 to 3 ft. \$2.00 each, \$17.50 per 10; 3 to 4 ft. \$3.00 each.

PINUS—Pine

White Pine. *P. strobus.* Native evergreen. Large, dark green needles. Cannot be shipped out of New England. 2 to 3 ft. \$1.00 each, \$9.00 per 10; 3 to 4 ft. \$2.00 each.

Mugho Pine. *P. montana, var. mughus.* Dwarf, slow-growing, compact, and neat in appearance. Very hardy. For low, evergreen plantings 12 to 18 in. \$2.50 each, \$20.00 per 10.

Norway Pine. *P. resinosa.* Beautiful, dense tree. Long, deep green needles. Very hardy. 2 to 3 ft. \$2.50 each.

Scotch Pine. *P. sylvestris.* Rapid growing. Very ornamental Pine. Gray-green needles. Compact grower. Will grow in very unfavorable soil and climate. 12 to 18 in. 75c. each, \$7.00 per 10; 2 to 3 ft. \$1.75 each.

Scotch Pine (*Pinus sylvestris*)

PSEUDOTSUGA

Douglas Fir. *P. taxifolia.* Beautiful, soft dark green needles. 18 to 24 in. \$2.00 each, \$17.50 per 10; 2 to 2½ ft. \$2.75 each, \$26.00 per 10; 3 to 3½ ft. \$4.50 each, \$42.00 per 10.

TAXUS

Japanese Yew. *T. cuspidata capitata.* Hardy, upright growth, and dense, dark green, handsome foliage. Slow-growing, good for low hedges, foundation planting, or for garden use. 18 to 24 in. \$4.00 each, \$35.00 per 10; 12 to 18 in. \$2.50 each, \$22.50 per 10.

Japanese Yew. *T. cuspidata.* Hardy, like the above, but of more spreading habit. 12 to 18 in. \$2.50 each, \$22.50 per 10; 18 to 24 in. \$4.00 each, \$35.00 per 10.

American Yew. *T. canadensis.* Spreading habit, increasing rapidly. Dark green foliage. Plant under evergreens or on shady hillsides. Prefers moisture. 1½ to 2 ft. \$2.50 each, \$22.50 per 10; 12 to 18 in. \$2.00 each, \$18.00 per 10.

Dwarf Japanese Yew. *T. cuspidata nana.* A compact, slow-growing Yew. Very useful for planting where low effects are wanted. Rich dark green. 12 to 15 in. \$3.00 each, \$28.00 per 10; 15 to 18 in. \$4.00 each, \$37.00 per 10.

TSUGA—Hemlock

Hemlock. *T. canadensis.* One of the most beautiful of evergreens, as well as being useful and very hardy. Used for tall or low hedges. For wind-breaks or screens, or for evergreen plantings of any nature. 12 to 18 in. \$1.25 each, \$10.00 per 10; 18 to 24 in. \$1.75 each, \$15.00 per 10; 2 to 3 ft. \$3.00 each, \$28.00 per 10; 3 to 4 ft. \$4.00 each.



Japanese Yew (*Taxus cuspidata*)

THUJA—Arborvitae

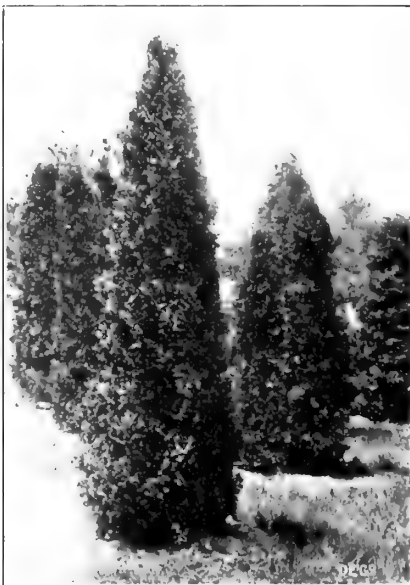
American Arborvitae. *T. occidentalis.* Dense, columnar growth. Good for hedges. Will stand severe clipping. 1½ to 2 ft. \$1.00 each, \$9.00 per 10; 2 to 3 ft. \$2.00 each, \$18.00 per 10; 3 to 4 ft. \$4.00 each; 4 to 5 ft. \$5.50 each.

Pyramidal Arborvitae. *T. occidentalis, var. pyramidalis.* Bright rich green. 18-24 in. \$2.00 each, \$18.00 per 10; 2 to 3 ft. \$2.75 each, \$25.00 per 10; 3½ to 4 ft. \$4.50 each, \$43.50 per 10; 4 to 4½ ft. \$6.00 each, \$58.00 per 10; 5 to 6 ft. \$9.50 each, \$92.00 per 10; 6 to 7 ft. \$12.00 each.

Golden Arborvitae. *T. occidentalis, var. aurea.* Yellow-green in color. 2 to 3 ft. \$3.00 each.

Globe Arborvitae. *T. occidentalis, var. globosa.* Dwarf, compact and round. Use against foundations or for formal effects. 12 to 15 in. \$1.50 each; 15 to 18 in. \$2.00 each, \$18.00 per 10.

Siberian Arborvitae. *T. wareana.* An attractive, medium height evergreen for low plantings. Delicate light green foliage. 2½ ft. \$3.00 each.



Pyramidal Arborvitae (*Thuja occidentalis* var. *pyramidalis*)



Hemlock (*Tsuga canadensis*)



EVERGREENS—Broad-Leaved

COTONEASTER

C. horizontalis. A dwarf evergreen shrub of great value for the rock garden. Spreading, almost prostrate growth. Leaves small and round, shiny green. Bright scarlet berries. 6 in. pots, \$1.25 each, \$10.00 per 10.

DAPHNE

Garland Flower. *D. cneorum* (See also perennials). May to Oct. A low, shrubby perennial, bearing sweet-scented, pink flowers in clusters, the florets of which are shaped like those of the lilac. 6 to 10 in. 75c. each, \$7.00 per 10.

EPIGAEA repens. Trailing Arbutus
(See PERENNIALS)

EUONYMUS (See VINES)

KALMIA

Mountain Laurel. *K. latifolia.* The beautiful and much sought laurel of our native woods. Pink and white flowers in June. Plant in dry shade or partial sun, on the margin of woods or under lawn trees. 18 to 24 in. \$2.50 each, \$22.50 per 10.

LEUCOTHOE

Drooping Andromeda. *L. catesbaei.* In early Spring the graceful, drooping branches of this evergreen shrub are hung with beautiful, pendulous racemes of pure white flowers, in shape like Lily-of-the-valley. Plant in a shady place. 12 to 18 in. \$1.75 each, \$16.00 per 10.

PACHYSANDRA

(See PERENNIALS)

PIERIS

Mountain Fetterbush. *P. floribunda.* Low, spreading, graceful shrub, good for foundation plantings. White flowers in early Spring. Price, each, 12 to 18 in. plants, \$3.00.

RHODODENDRONS

Great Laurel. *R. maximum.* For the border of the woods or for evergreen plantings. Immense pink and white blossom heads in July. 2 ft. \$3.00 each, \$28.00 per 10.

Early-flowering Rhododendron. *R. carolinianum.* Bright pink flower clusters in early June. Growth more graceful and attractive than the others and flowers of an especially clear bright pink. 2 ft. \$3.50 each.

Catawba Rhododendron. *R. catawbiense.* Lilac-rose flowers. All the rhododendrons offered here are native and should do well under ordinary care. Plant in shade or partial sun and give them a good mulching of straw or leaves. They prefer sour soil. 2 ft. \$3.00 each, \$28.00 per 10.

VINCA MINOR

(See PERENNIALS)



HARDY SHRUBS

ALTHAEA (See **HIBISCUS**)

AMELANCHIER

Downy Shadblow. *A. canadensis.* In earliest Spring the white blossoms of the Downy Shadblow are very conspicuous throughout the northern forests before any deciduous trees are sending out their leaves. Bears edible red fruit. 3 to 4 ft. \$1.00 each, \$9.00 per 10.

AZALEA

White Swamp Pink. *A. viscosa.* Deliciously fragrant white flowers. 12 to 18 in. \$1.00 each, \$9.00 per 10; 18 to 24 in. \$1.50 each, \$14.00 per 10.

Flame Azalea. *A. lutea.* Brilliant, flame-colored flowers in large clusters. 18 to 24 in. \$2.50 each; 12 to 18 in. \$1.75 each, \$16.00 per 10; 2 to 2½ ft. \$3.25 each.

Swamp Pink. *A. rosea.* The native azalea. Coral-pink, with a delightful fragrance. Blooms at Memorial Day just before the leaves appear. 15 to 18 in. \$1.50 each; 18 to 24 in. \$2.50 each; 2 to 4 ft. specimens, \$5.00 to \$15.00 each.

ALMOND (See **PRUNUS**)

BERBERIS

Japanese Barberry. *B. thunbergi.* The ever-useful and attractive barberry needs no description. For foundation planting, edging walks or drives, or as single specimens in the shrubbery border it has no equal. Clean cut, green leaves on thorny stems, and beautiful red berries in Fall and Winter. 3 yr. 12 to 18 in. 30c. each, \$2.00 per 10, \$15.00 per 100; 3 yr. 18 to 24 in. 40c. each, \$3.00 per 10, \$25.00 per 100.

New Red-leaved Japanese Barberry. *B. thunbergi atropurpurea.* An attractive bit of foliage color for interspersing among shrubbery or as single specimens. Grows brighter red in Summer and in Fall takes on orange and bronze tints. Berries hang persistently all Winter. Plant in full sun. 12 to 18 in. plants 75c. each, \$7.00 per 12.

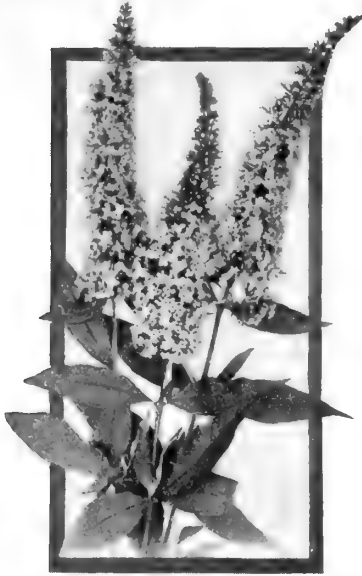
Box Barberry. A miniature shrub of neat, attractive appearance. 3 yr. 35c. each, \$2.50 per 10, \$20.00 per 100.

ARONIA

Black Chokeberry. *A. melanocarpa.* A small shrub, bearing white flowers in corymbs in early Summer, and black fruit in the Autumn. Foliage very attractive in the Autumn. Prefers moist soil, but will grow anywhere. 2 to 3 ft. 60c. each, \$5.50 per 10.



White Swamp Pink (*Azalea viscosa*)

Butterflybush (*Buddleia magnifica*)**BUDDLEIA**

Butterflybush. *B. magnifica*. Fragrant racemes of lavender flowers from August until frost. Wide branching habit. Dies to the ground each year, sending out new wood every Spring and attaining a height of 4 to 6 ft. in a single season. Heavy plants, 50c. each, \$4.50 per 10. Plant only in the Spring.

CALYCANTHUS

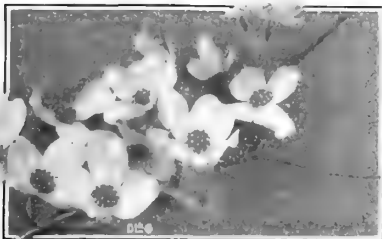
Sweetshrub. *C. floridus*. A dwarf, symmetrical shrub, the leaves of which are fragrant. Chocolate-colored, sweet-scented flowers. 2 to 3 ft. 75c. each, \$7.00 per 10.

CARAGANA

Siberian Pea Tree. *C. arborescens*. A shrub or small tree attaining a height of 15 to 20 ft., bearing bright yellow, pea-shaped flowers in May and June. Very hardy. 3 to 4 ft. 75c. each, \$6.50 per 10.

CHIONANTHUS

White Fringe. *C. virginica*. Large shrub or small tree, of neat, sturdy growth. Glossy, dark green foliage, and in June, feathery racemes of pure white flowers. 2 to 3 ft., \$1.50 each.

Dogwood (*Cornus*)**CLETHRA.** Summersweet

Sweet Pepper Bush. *C. alnifolia*. Creamy white, very fragrant flowers in long racemes, from July to September. Attains a height of 3 to 10 ft. 2 to 3 ft. 60c. each, \$5.50 per 10.

CORNUS

***C. alternifolia.* Pagoda Dogwood** An attractive shrub growing from 6 to 10 ft. high, with exceptionally bright blue berries in the Fall. One of the most attractive berried shrubs. 3 to 4 ft. plants, 60c. each, \$5.50 per 10, 4 to 5 ft. \$1.00 each.

Red Twig Dogwood. *C. sibirica*. A native shrub of spreading habit. The bright red bark is attractive, especially when planted with the green-barked kerria. 2 to 3 ft. 50c. each, \$4.50 per 10; 4 to 5 ft. spread, extra heavy, \$1.00 each, \$9.00 per 10.

Red Osier. *C. stolonifera*. A native red barked Dogwood resembling *Cornus sibirica*. White blossoms in early Summer and occasionally a few throughout the season. Grayish white berries. 2 to 3 ft. 50c. each, \$4.50 per 10.

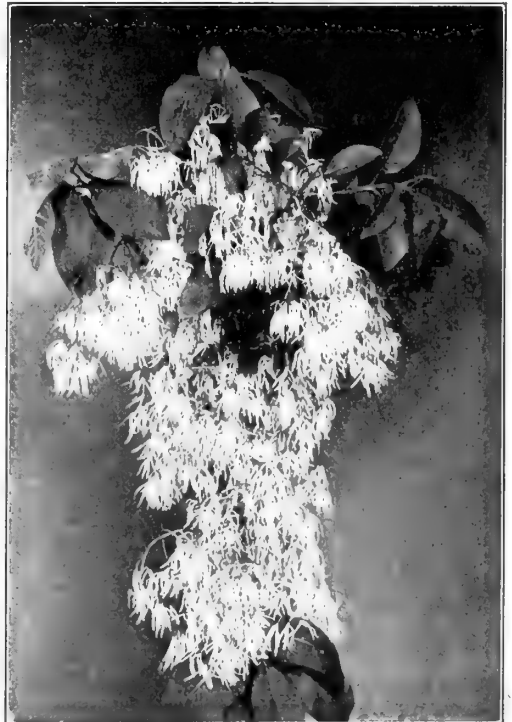
C. stolonifera flaviramea. Just like *stolonifera*, except that the bark is golden yellow. 2 to 3 ft. 50c. each, \$4.50 per 10; 3 to 4 ft. 65c. each, \$6.00 per 10.

CYDONIA

Japanese Quince. *C. japonica*. An old-fashioned shrub. Aflame with scarlet flowers in May. 2 to 3 ft., 75c. each, \$6.50 per 10.

DAPHNE

Daphne mezereum. Deliciously fragrant, tiny, wine-purple flowers in earliest spring before the leaves appear. 12 to 18 in. \$1.00 each.

White Fringe (*Chionanthus virginica*)

DEUTZIA

Lemoine's Deutzia. *D. lemoinei.* An invaluable medium-sized shrub of beautiful symmetrical growth. Densely covered with sprays of white flowers in late May and early June. 2 to 3 ft., 60c. each, \$5.50 per 10.

Slender Deutzia. *D. gracilis.* A smaller variety with slender growth. White flowers in May and early June. 18 to 24 in., 65c. each, \$6.00 per 10.

Pride of Rochester. *Deutzia.* A larger growing variety, bearing in June, long, pendulous sprays of pink-tinged white flowers. 2 to 3 ft., 50c. each, \$4.50 per 10.

D. magnifica. One of the showiest varieties. Tall, full growth. Erect panicles of double pure white flowers in June. 2 to 3 ft. \$1.00 each.

ELAEAGNUS

Russian Olive. *E. angustifolia.* Small tree with rounded, bushy head and silvery, dull green foliage. Edible fruit. Very hardy. 3 to 4 ft. 75c. each.

EUONYMUS

Winged Euonymus. *E. alatus.* Very beautiful in autumn for its scarlet foliage and masses of fruit which are like the Bittersweet in form and color. Curious winged bark. 2 to 3 ft., \$1.00 each, \$9.00 per 10.

European Burning Bush. *Euonymus europaeus.* Tall, erect growing shrub, highly prized for its gorgeous scarlet fruit in autumn. 2 to 3 ft. 75c. each, \$6.50 per 10, 3 to 4 ft. \$1.00 each, \$9.00 per 10.

EXOCHORDA

Pearlbush. *E. grandiflora.* Snow-white flowers like pearls cover this bush in May. One of the finest shrubs. 2 to 3 ft., 75c. each.

FORSYTHIA

Fortune Goldenbell. *F. fortunei.* Densely covered in early spring with glorious, bell-shaped, yellow flowers. 2 to 3 ft. 50c. each, \$4.00 per 10; 3 to 4 ft. heavy, 75c. each, \$7.00 per 10.



Slender Deutzia (*Deutzia gracilis*)

Weeping Goldenbell. *F. suspensa.* The most graceful forsythia. The branches are long and pendulous, with an upward sweep at the ends. In May they are densely set with yellow flowers. 2 to 3 ft. 60c. each, \$5.00 per 10; 3 to 4 ft. heavy, 75c. each, \$7.00 per 10.

Showy Forsythia. *F. spectabilis.* Bright golden yellow. The freest flowering and most beautiful forsythia. 2 to 3 ft. 75c. each, \$7.00 per 10.

HIBISCUS. Althaea

Rose of Sharon. *H. syriacus.* One of the few shrubs to blossom in late summer. Large, single or double flowers, shaped like hollyhocks in red, white, pink, or lavender. They form large shrubs, not unlike well-grown white lilacs. 2 to 3 ft. 50c. each, \$4.50 per 10; 3 to 4 ft. 65c. each, \$6.00 per 10.

HYDRANGEA

Hills of Snow. *H. arborescens sterilis.* A low-growing hydrangea which is covered with huge heads of white flowers in July. Splendid for low, unclipped hedges. 2 to 3 ft. 60c. each, \$5.50 per 10; 3 to 4 ft. \$1.00 each, \$9.00 per 10.

Common Hydrangea. *H. paniculata grandiflora.* The variety which attains such huge size and which holds its flowers until late in the fall. White flowers turning rose and bronze with age. 18 to 24 in., 50c. each, \$4.50 per 10; 2 to 3 ft., 75c. each, \$7.00 per 10; 3 to 4 ft., 90c. each, \$8.50 per 10.

Tree Hydrangea. The common hydrangea is often trained to grow in a treelike form. After planting, cut off any side shoots which may start on the main stem the first year. 3 to 4 ft., \$1.25 each, \$10.00 per 10.

HAMAMELIS

Witch-hazel. *H. virginiana.* A very interesting and useful native shrub, valued for its golden yellow, thread-like blossoms, which are borne in profusion in November. Attains a height of 15 ft. 2 to 3 ft. 50c. each, \$4.50 per 10; 3 to 4 ft. 65c. each, \$6.00 per 10; 4 to 6 ft. \$1.00 each.

Vernal Witch Hazel. *Hamamelis vernalis.* An attractive Witch Hazel from the Ozark Mountains and apparently hardy in New England. This is the earliest shrub to blossom, bearing in profusion in late Winter and early Spring, flowers which vary in color from yellow to maroon red. 2 to 3 ft. \$1.25 each, 3 to 4 ft. \$1.75 each, \$16.00 per 10.



Common Hydrangea (*Hydrangea paniculata grandiflora*)

LIGUSTRUM

Ibodium Privet. *L. ibodium.* A cross between Ibota and California privet, combining the hardiness and vigor of the former with the beauty of the latter. 2 to 3 ft., 25c. each, \$2.00 per 10, \$18.00 per 100; 3 to 4 ft. 30c. each, \$2.50 per 10, \$22.00 per 100.

Ibota Privet. *L. ibota.* Used in the North, where California Privet is not hardy. Excellent hedge plant. 2 to 3 ft. 35c. each, \$3.00 per 10, \$22.00 per 100; 3 to 4 ft. 40c. each, \$3.50 per 10, \$27.00 per 100; 4 to 5 ft. specimens, \$1.50 each.

Regel's Privet. A very hardy, spreading type of Ibota privet. Much branched. 2 to 3 ft. 50c. each, \$4.50 per 10; 3 to 4 ft. \$1.00 each.

LONICERA

Tatarian Honeysuckle. *L. tatarica.* This shrub often grows to the height of a small tree. Dainty pink or white flowers in earliest spring, followed by bright red berries which are attractive to birds. 2 to 3 ft. 50c. each, \$4.00 per 10; 3 to 4 ft. 60c. each, \$5.00 per 10; 4 to 6 ft. \$1.00 each, \$9.00 per 10; 6 to 7 ft. \$2.00 each.

L. morrowi. Cream-white flowers, deliciously fragrant. Bright red berries. Spreading form. 2 to 3 ft. 50c. each, \$4.50 per 10.

PHILADELPHUS

Sweet Syringa. *P. coronarius.* A well-beloved, old-fashioned shrub. Deliciously fragrant, creamy white flowers in June. 2 to 3 ft. 50c. each, \$4.50 per 10; 3 to 4 ft. 75c. each, \$7.00 per 10.

Golden Syringa. *P. foliis aureus.* Very bushy and having rich yellow leaves. Good for planting with other shrubs where the golden green foliage relieves the monotonous green of the planting. 18 to 24 in. 75c. each, \$7.00 per 10; 2 to 2½ ft. \$1.00 each, \$9.00 per 10.

P. virginale. A beautiful new mockorange. The snowy white flowers are twice as large as the older varieties, are semi-double, and very fragrant. Covered with blossoms in June and blooms occasionally during the Summer and Fall. Of proven vigor. 2 to 3 ft. \$1.00 each, \$9.00 per 10.



Philadelphus virginale

(Nanking Cherry (*Prunus tomentosa*))

P. grandiflora. Large-flowered, very fast growing. Excellent for use as a screen shrub. Not fragrant. 2 to 3 ft. 50c. each, \$4.50 per 10; 3 to 4 ft. 60c. each, \$5.50 per 10; 4 to 5 ft. \$1.00 each, \$9.00 per 10; 5 to 7 ft. \$1.50 each, \$13.50 per 10.

PHYSOCARPUS

Ninebark. *P. opulifolius.* A rapid growing shrub. Attains a large size in a short time. Flat racemes of cream-colored flowers. Blossoms in early Summer. 2 to 3 ft. 50c. each, \$4.00 per 10; 3 to 4 ft. 60c. each, \$5.00 per 10.

Golden Ninebark. *P. opulifolius luteus.* A tall shrub having golden yellow leaves and panicles of creamy white flowers in late Spring. 3 to 4 ft. 50c. each, \$4.50 per 10; 4 to 5 ft. \$1.00 each, \$9.00 per 10; 5 to 7 ft. \$1.50 each, \$13.50 per 10.

POTENTILLA

Shrubby Cinquefoil. *P. fruticosa.* Single yellow flowers, borne all summer. A dwarf grower, preferring a moist place. 18 to 24 in., 50c. each, \$4.00 per 10.

PRUNUS

Flowering Almond. *P. japonica.* In May the branches of this little shrub are wreathed with tiny pink and white rosettes. 2 to 3 ft. 75c. each, \$6.00 per 10; 3 to 4 ft. \$1.00 each.

Nanking Cherry. *P. tomentosa.* A beautiful flowering cherry which forms a rounded, shrubby bush or small tree, completely covered in late April and early May with soft, rose-tinted blossoms. Perfectly hardy, even in Canada, where flowering trees are scarce. 2 to 3 ft. 60c. each, \$5.50 per 10; 3 to 4 ft. 75c. each, \$7.00 per 10.

Choke Cherry. *P. virginiana.* If it were not so common, the Choke Cherry with its wealth of snow-white fragrant flowers, borne in 2 to 3 in. racemes, would be one of the most popular shrubs. 2 to 3 ft. 50c. each, \$4.50 per 10; 3 to 4 ft. 60c. each, \$5.50 per 10.

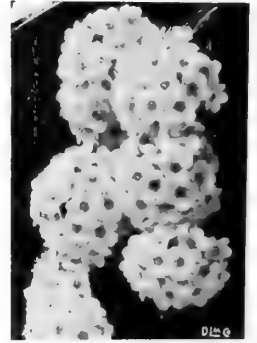
Double-flowering Plum. *P. triloba.* Delicate, pink double flowers, often as much as 1 in. across, thickly set on long, gracefully arching branches in May. Very beautiful and choice. Hardy. 3 to 4 ft. \$1.00 each, \$9.00 per 10.



Waterer Spiraea (*Spiraea bumalda*, Anthony Waterer)



Golden Elder (*Sambucus aurea*)



Vanhoutte Spiraea (*Spiraea vanhouttei*)

RHUS

Smoke Bush, Purple Fringe. *R. cotinus*. Immense heads of pale purple flowers, so tiny as to give the bush a smoky appearance. Distinctive and beautiful. 2 to 3 ft., \$1.00 each.

Staghorn Sumac. *R. typhina*. A native shrub, popular for naturalistic plantings. Is being planted also more generally in the last few years as a lawn shrub. 3 to 4 ft., 50c. each, \$4.50 per 10; 4 to 5 ft. 60c. each, \$5.50 per 10

Shining Sumac. *R. copallina*. Dwarf sumac with shining, glaucous green leaves. Bright red berries. 2 to 3 ft. 50c. each, \$4.50 per 10; 3 to 4 ft. 60c. each, \$5.50 per 10.

RUBUS

Purple-flowering Raspberry. *R. odoratus*. A native shrub, particularly adapted to moist shade. From midsummer till autumn, the single, rosy-purple flowers nearly 2 in. across, are borne freely. The large, red berries are edible and usually enjoyed by the younger members of the family. Large leaves, several inches across. Bush grows 4 to 6 ft. tall. 3-4 ft. plants, 40c. each, \$3.00 per 10.

SAMBUCUS

Snowy Elder. *S. canadensis*. Handsome, compound leaves, and great corymbs of white, fragrant flowers in June. When the beauty of this shrub is more fully appreciated it will be planted extensively. 2 to 3 ft., 50c. each, \$4.50 per 10; 3 to 4 ft., 75c. each, \$7.00 per 10.

Cut-leaf Elder. *S. canadensis acutiloba*. A cut-leaf form of the Snowy Elder. 2 to 3 ft. 60c. each, \$5.50 per 10.

Golden Elder. *S. aurea*. Golden leaf form of the Snowy Elder. 2 to 3 ft. 50c. each, \$4.50 per 10.

Early Elder. *S. pubens*. Panicles of cream white flowers in May. A tall growing, shapely shrub. Scarlet berries in midsummer. 3 to 4 ft. 75c. each, \$7.00 per 10.

SPIRAEA

Waterer Spiraea. *S. bumalda*, Anthony Waterer. A dwarf spiraea useful for bordering shrubbery plantings. Deep rose-colored flowers in flat corymbs during the entire season. 18 to 24 in., 60c. each, \$5.50 per 10; 2 to 2½ ft. 80c. each, \$7.00 per 10.

Steeplebush. *S. tomentosa*. Native pasture spiraea, used for naturalizing. Tall spikes of soft, rose-colored flowers in midsummer. 2 to 3 ft., 25c. each, \$2.00 per 10.

Meadowsweet. *S. latifolia*. Native white spiraea, blossoming in early summer. 2 to 3 ft., 40c. each, \$3.50 per 10.

Thunberg Spirea. *S. thunbergi*. A graceful variety, having finely shaped, feathery, fernlike leaves, and double flowers in May. 2 to 3 ft. 55c. each, \$5.00 per 10; 3 to 4 ft. 75c. each, \$7.00 per 10. Extra heavy, \$1.00 each.

Bridalwreath. *S. prunifolia*. The true bridalwreath is distinct from vanhouttei although often confused with it. Grows erect. Thickly set with tiny white rosettes before the leaves appear. 2 to 3 ft., 55c. each, \$5.00 per 10.

Trichocarpa. Like Vanhoutte, but blooming two or three weeks later. A strong hardy grower and a great addition to the list of late blooming shrubs. 2 to 3 ft. \$1.00 each, 3 to 4 ft. \$1.50 each.

Vanhoutte Spiraea. *S. Vanhouttei*. In May this most beautiful of spiraeas is wreathed to the end of each drooping branch with white flowers. Its form and habit make it especially suitable for planting in a conspicuous place. Makes a splendid tall hedge. 2 to 3 ft. 50c. each, \$4.50 per 10; 3 to 4 ft. 75c. each, \$6.50 per 10; 4 to 5 ft. heavy clumps, \$2.00 each; 5 to 6 ft. \$2.00 each.

STEPHANANDRA

Cutleaf Stephanandra. *S. flexuosa*. Graceful, pendant, fountain-like habit of growth. Leaves delicately cut and fern-like. Masses of creamy white flowers. 2 to 3 ft., 75c. each, \$6.00 per 10.

SYRINGA

Common Purple Lilac. *S. vulgaris.* This most common of shrubs never loses its popularity. Fine for tall flowering hedge. 2 to 3 ft., 50c. each; \$4.50 per 10; 3 to 4 ft., 75c. each; \$7.00 per 10.

Common White Lilac. 2 to 3 ft. 75c. each; \$6.50 per 10.

Syringa villosa. A lilac species of delicate charm and beauty. Soft, pink flowers in June. 2 to 3 ft., 75c. each; \$7.00 per 10.

Persian Lilac. *S. persica.* A slenderly beautiful lilac with delicate, airy panicles of lavender-pink, deliciously fragrant flowers in June. As a background for a perennial border, nothing could be better than this shrub. The growth is hardy, but not rampant, and will not crowd other shrubs or flowers. 2 to 3 ft. 75c. each; \$7.00 per 10.

White Persian Lilac. *S. persica alba.* White-flowered form of Persian lilac. 2 to 3 ft. \$1.00 each.

Hungarian Lilac. *S. josikaea.* Valued for its late flowering. Grows to be a small tree. Flowers purple, in late June. Leaves rich, shiny green. 3 to 4 ft. \$1.00 each.

Japanese Tree Lilac. *S. japonica.* The only lilac to become a real tree in size, eventually attaining 30 ft. in favorable locations. Blooms in June and July. The branched panicles of flowers are often 12 in. long and are creamy white in color. Very desirable. 2 to 3 ft. 75c. each; \$7.00 per 10; 3 to 4 ft. \$1.00 each; \$9.00 per 10.

VACCINIUM

V. corymbosum. *Highbush Blueberry.* Well-known native blueberry of New England, valued for its delightful, pink-tinged white flowers and edible fruit. 2 to 3 ft. \$1.00 each; 3 to 4 ft. \$1.50 each.

Hybrid Lilacs. These are fast supplanting the common lilac, whose greatest fault has always been that of not blooming for several years after planting. The lilac hybrids often blossom the same year they are planted, a fact which has brought them instant favor wherever they have been tried. There are nearly a hundred new varieties in many shades of creamy white, lavender, rose, purple and blue, both single and double. We offer below a few of the most desirable. 2 to 3 ft.:

Marie Legraye. Single pure white.

Mme. Lemoine. Very fine; double snowy white.

Mme. Casimir Perrier. A beautiful double cream white.

Belle de Nancy. Double rose-pink.

Souvenir de Ludwig Spaeth. Single grape-red.

Charles Joly. Double, dark crimson with silvery reflex. Exceptionally beautiful.

Charles the Tenth. Giant trusses of single lilac-purple flowers.

President Grevy. Immense heads. Beautiful double blue. Price, each, any of the hybrid Lilacs, \$1.25, \$10.00 per 10.

SYMPHORICARPOS

Snowberry. *S. racemosus.* This old-fashioned shrub is found around many an old doorstep in New England. It is well worth growing for the waxy white berries which hang until winter. Is popular again. 2 to 3 ft., 50c. each; \$4.50 per 10.

Indian Currant. *S. vulgaris.* Sometimes called coralberry because the long, slender branches are thickly studded with coral-red berries in autumn. Quick growing shrub. 2 to 3 ft., 50c. each; \$4.50 per 10.



Roadway Planting of Persian Lilac (*Syringa persica*)

Arrowwood, *Viburnum lantana*

VIBURNUM

Mapleleaf Viburnum. *V. acerifolium.* A very hardy Viburnum, attaining a height of five feet. Cream-white flowers, followed by black fruit. Especially valuable because of its gorgeous pink tinted foliage in Autumn. 2 to 3 ft. 60c. each; \$5.50 per 10.

Hobblebush. *V. alnifolium.* A spring-flowering viburnum of our native woods. Broad, flat corymbs of creamy white flowers. Beautiful for a shady place. 2 to 3 ft., 50c. each, \$4.50 per 10.

Highbush Cranberry. *V. americanum.* Very hardy Viburnum, attaining a height of 12 feet. White flowers in June, and during Fall and Winter the bushes are literally loaded with gorgeous red fruit resembling the Cranberry in color, size and flavor. Useful for jelly. 2 to 3 ft. 75c. each; \$7.00 per 10.

Mayflower Viburnum. *V. carlesii.* A slow-growing and very scarce variety, the flowers of which have the fragrance and color of the Trailing Arbutus. 12 to 18 in. \$2.00 each.

Withe-rod. *V. cassinoides.* Flat corymbs of cream-white flowers in June and July, followed by red berries which turn black. An attractively shaped shrub which will do especially well in a moist place. 2 to 3 ft. 70c. each; \$6.50 per 10; 3 to 4 ft. 90c. each; \$8.50 per 10.

Arrowwood. *V. dentatum.* Roughly heart-shaped leaves, assuming rich, dark red shades in fall. White flowers followed by blue berries. Ornamental as a hedge plant. 2 to 3 ft., 50c. each; \$4.50 per 10.

Wayfaring-tree. *V. lantana.* Tall shrub or small tree. Bears red berries, turning black. White flowers in heavy corymbs. 2 to 3 ft. 60c. each.

European Cranberry Bush. *Viburnum opulus.* The European Cranberry Bush is famed for its scarlet fruits in autumn; 2 to 3 ft. 60c. each; \$5.50 per 10.

Dwarf Cranberry Bush. *Viburnum opulus nanum.* A very dwarf variety of *Viburnum opulus.* A mound of white when in bloom, 8 to 10 in. \$1.00 each; \$9.00 per 10.

Japanese Snowball. *V. tomentosum plicatum.* The best of the snowballs. The white flower heads are thickly set along the stem and are very double. 2 to 3 ft., \$1.00 each; \$9.00 per 10.

Mayflower Viburnum (*Viburnum carlesii*)

WEIGELA

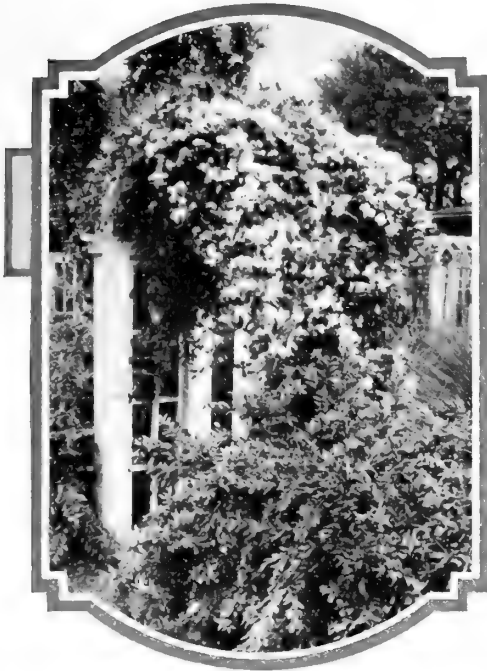
White Weigela. *W. candida.* A vigorous shrub of tall growth, bearing pure white, bell-shaped flowers in June. 2 to 3 ft., 60c. each; \$5.50 per 10.

Red Weigela. *W. Eva Rathke.* A low-growing Weigela with outspreading branches and clusters of deep, rose-red flowers. 18 to 24 in., 75c. each; \$7.00 per 10.

W. floribunda. A little lighter red than *Eva Rathke*, but is a stronger and larger grower. 2 to 3 ft. 60c. each; \$5.50 per 10.

Pink Weigela. *W. rosea.* A tall shrub; beautiful, bell-shaped flowers in large clusters in June. 2 to 3 ft., 60c. each; \$5.50 per 10.

Pink Weigela (*Weigela rosea*)



Hardy Vines

Plant vines in deep, carefully enriched soil, and give them a top dressing of manure every fall just after the ground freezes. Do not place where they will be damaged by snowslides from the roof, or where there will be a constant dripping off the eaves about their roots, as this packs the ground too hard. Vines should be more generally planted, to soften the strict lines of brick or stucco buildings, to provide shade or privacy on a veranda or pergola, or to hide unsightly objects.

All vines offered below are 2 yr. No. 1 plants.

ACTINIDIA

Silvertine. *A. arguta.* Flowers white, with a purple center, entirely covering the vine. Edible fruit. Shining, dark green foliage. \$1.00 each, \$9.00 per 10.

AKEBIA

Fiveleaved Akebia. *A. quinata.* Leaflets dark green, arranged five on a stalk. Flowers violet-brown with a cinnamon odor. One of the best of climbers, having a delicate gracefulness, and giving a dense shade. 60c. each, \$5.00 per 10.

AMPELOPSIS

Boston Ivy. *A. vitifolia.* Used to cover stone or brick buildings, as it clings to a perfectly smooth surface by means of its tiny aerial rootlets. Handsome foliage, dark blue berries, and harmonizing autumn tints. 50c. each, \$4.50 per 10.

Woodbine. *A. quinquefolia.* A native vine, unexcelled for use on wooden buildings. Rapid growing, quickly covering old trees or large surfaces. Bright blue berries and scarlet foliage in fall 50c. each, \$4.50 per 10.

ARISTOLOCHIA

Dutchmans-pipe. *A. siphocampylus.* Large, dark green leaves, and curious brownish flowers, shaped like pipes. Very vigorous. A widely planted vine. \$1.00 each, \$9.00 per 10.

BIGNONIA

Trumpetreeper. *B. radicans.* Vigorous, rapid growing vine, bearing large, orange-scarlet, tubular flowers in July and August. 50c. each, \$4.50 per 10.

CELASTRUS

Japanese Bittersweet. *C. orbiculatus.* A strong, hardy variety, by some considered superior to the American Bittersweet. Orange berries and bright red seeds. 50c. each, \$4.50 per 10.

American Bittersweet. *C. scandens.* A native vine, having a dense growth. Much prized for its orange-scarlet berries which are extensively used for decorating. 50c. each, \$4.50 per 10.



Silvertine (*Actinidia arguta*)

CLEMATIS

Japanese Virgins-bower. *C. paniculata*. One of the most useful and beautiful of vines. Attractive foliage which is hidden in August beneath a shower of snow white, feathery flowers. 50c. each, \$4.50 per 10.

Clematis henryi. The large flowering clematis is easily the most richly colored of northern vines. Single flowers 3 to 6 in. across. Delicate creamy white. \$1.00 each.

Clematis jackmani. Like the above except in color which is a velvety purple. \$1.00 each.

Virgins-bower. *C. virginiana*. A dainty and attractive vine, perfectly hardy and very vigorous. White flowers in August. 50c. each, \$4.00 per 10

EUONYMUS

Wintercreeper. *E. radicans*. Big leaf wintercreeper. Hardy, dense growing evergreen vine, with thick, dark green leaves. Bears orange fruit similar to the native bittersweet. Self-clinging. 50c. each, \$4.50 per 10.

Euonymus radicans vegetus. Low, trailing vine similar to the above. Good for stone walls. Sometimes clipped for formal effects. 50c. each, \$4.50 per 10.

Baby Wintercreeper. *E. radicans minimus* or *kewensis*. A dandy little ground cover of glossy green, or may be trained to tiny mounds of green in the rock garden. 60c. ea., \$5.50 per 10.

LONICERA

Hall Honeysuckle. *L. halliana*. Rapid growing vine, bearing all summer, airy sprays of white and yellow blossoms which are very fragrant. 50c. each, \$4.50 per 10.

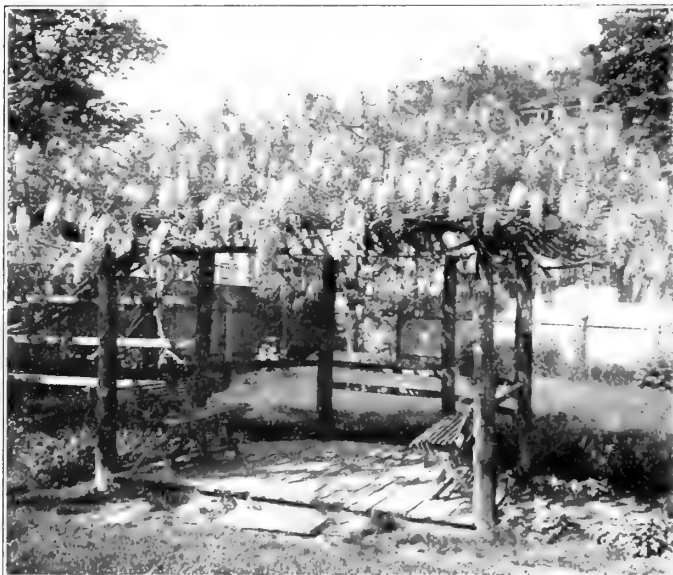
Scarlet Trumpet Honeysuckle. Glaucous green leaves and long, scarlet flowers. Beautiful. 50c. each, \$4.50 per 10.



Clematis jackmani



Silver Lace Vine (*Polygonum auberti*)



Chinese Wisteria (*Wisteria chinensis*)

LYCIUM

Matrimony-vine. *L. barbarum*. A shrubby climber, bearing small purple flowers followed by scarlet berries. 50c. each, \$4.50 per 10.

POLYGONUM

Silver Lace Vine. *P. auberti*. An invaluable rapid growing vine of dainty though strong and hardy habit. Covers itself throughout the summer and fall with long sprays of foamy white flowers. \$1.00 each, \$9.00 per 10.

WISTERIA

Chinese Wisteria. *W. chinensis*. Long racemes of lavender-purple flowers in May. The delightful fragrance of the Wisteria is one of its greatest charms. Grafted plants, 75c. each, \$6.50 per 10.

White Wisteria. *W. chinensis alba*. White form of above. Grafted plants. 75c. each, \$6.50 per 10.



ROSES, Hybrid Teas

Any of the following, except as noted, strong, 2 yr. No. 1 plants, 85c. each, \$8.00 per 10.

Columbia. A fine American rose. Flowers long and pointed, borne on unusually long, stiff, almost thornless stems. Color bright pink.

Duchess of Wellington. Saffron-yellow shaded with deep crimson at the base. Very free flowering and delightfully fragrant.

Eldorado or Land of Gold. Full, cup-shaped flowers. Golden yellow like that of the climbing rose Marechal Niel, which is so abundant in the south. Free flowering and fragrant. We believe Eldorado to be the best yellow H. T. rose for outdoor culture in New England. \$1.00 each.

General MacArthur. Authorities claim that this rose is the most free-flowering red garden rose. Rich crimson-scarlet. An old favorite.

Gruss an Teplitz. We especially recommend this as a bedding rose. Continually in bloom until November. Brilliant, deep red in color with a velvety sheen. Wide open flowers. 75c. each, \$7.00 per 10.

Hadley. A bright, dark red everbloomer, with long buds opening to full, perfect flowers. Very rich coloring.

Killarney. Long pointed buds of silvery pink; one of the finest for cutting.

Lady Ashtown. One of the very best of garden roses. Color rich satiny pink with a glow of yellow at the base of the petals. Of great value for cutting.

Lolita Armour. A rose of distinct and delicate coloring and at the same time of strong, vigorous growth. Color is a blending of golden yellow, copper, and coral red. Much hardier than Los Angeles which we have discarded as being unsuitable for this climate.

Mme. Butterfly. A sport of Ophelia and one of the most artistically colored roses. Bright pink, shading into apricot and soft yellow at the base.

Mme. Edouard Herriot. *The Daily Mail Rose.* Coral-red shaded with yellow and bright rose. Mme. Herriot proves to be one of the best growers and bloomers of all Hybrid Tea Roses in New England.

Mme. Caroline Testout. The rose which made Portland, Ore., famous. The streets of that city are lined with beds of this rose. Large, rounded blooms of a satiny-rose pink with darker center. Very free blooming.

Mrs. Aaron Ward. Probably bears more blooms than any other yellow rose; small, dainty flowers of Indian yellow, shading deeper toward the center.

Ophelia. Color soft flesh pink, changing in some seasons to an amber pink.

Radiance. Without doubt one of the finest roses for American gardens. Usually classed with the best half dozen for garden planting. Strong, upright growth; long stems and full, double flowers of silvery pink. The two Radiance roses belong to the type which stays in the bud, making them extremely lasting as a cut flower.

Red Radiance. Identical with Radiance except in color, which is a beautiful rose-red.



Mme Edouard Herriot



Souvenir de Claudius Pernet

Rev. F. Page Roberts. Rapidly coming to the front rank of garden roses. Buds copper red and very long. Flowers unusually double, yellow with red reflex. Strong, branching growth. \$2.50 each.

Rose Marie. Long pointed buds and flowers of rich, glowing rose-pink on long, strong stems. Rose Marie is one of the hardiest of hybrid tea roses and seems especially adapted to our northern climate. An ideal pink rose.

Souvenir de Claudius Pernet. The sensational new yellow rose named by a French hybridizer for his son Claudius, who was killed in the war. Strong healthy growth. Color, bright sunflower yellow. Long pointed buds opening to full, fragrant flowers. Disease resistant foliage. \$1.00 each.

Any of the above, except as noted, strong, 2 yr. No. 1 plants, 85c. each, \$8.00 per 10.

ROSES—HYBRID PERPETUALS

Any of the following, 75c. each, \$7.00 per 10.

Frau Karl Druschki. Perfectly formed, white flowers on long, stiff stems. Bears a heavy crop of flowers in June and from then every month until hard frost. The queen of white roses.

General Jacqueminot. The Jack Rose; known everywhere. Dark red.

George Arends, or Pink Druschki. Clear rose-pink and very fragrant. Otherwise identical to Frau Karl Druschki.

Hugh Dickson. A splendid, dark red June rose, the color of which does not fade into purple as do some in this class. Tall, strong growth.

Magna Charta. Popular bright pink bush rose. Flowers round and very full. Makes a large, shrublike bush. Blooms to some extent all summer.

Mrs. John Laing. Quite similar to Magna Charta but very fragrant. Bright pink flowers globular in form. Blooms frequently all summer.

Mme. Plantier. Flowers white, unusually hardy. Frequently planted in cemeteries. Makes a large, shrublike bush.

Paul Neyron. Possibly the largest flowering. Rich rosy red.

ROSA RUGOSA

Rugosa Roses. White or red. Used extensively for hedges and shrubbery borders. Strong, vigorous growers. Immense, single flowers and thick, dark leaves. 50c. each, \$4.50 per 10.

Conrad Meyer. A very tall-growing rose of the rugosa type. Flowers a clear pink. 75c. each.

F. J. Grootendorst. A hybrid having leaves and growth like a rugosa and clusters of rich red flowers like a crimson rambler. Blooms continuously all Summer and into the Fall. Makes a splendid hedge or border. \$1.00 each, \$9.00 per 10.

MOSS ROSES

The old-fashioned moss rose has never lost its appeal. The buds are covered with a light green moss which gives the flowers an artistic appearance. Red, pink, or white, 50c. each, \$4.50 per 10.

ROSA SPINOSISSIMA ALTAICA— Altai Rose

A rose species of tall, shrubby growth, like Rosa Hugonis. Large, single, pure white flowers. Sometimes called the Northern Cherokee. 2 to 3 ft. \$1.00 each.



George Arends or Pink Druschki

AUSTRIAN BRIARS

Persian Yellow. A lovely yellow bush rose deservedly one of the most popular in the north, as it is perfectly hardy. Forms a large bush whose branches are thickly set with bright yellow, semi-double flowers in June. 75c. each, \$7.00 per 10.

Austrian Copper. A rare and very striking rose. Vivid flame and gold single flowers. Fine for a wild or rocky place. \$1.00 each.

Harrison's Yellow. In some localities a far better grower than Persian Yellow. Semi-double, yellow flowers. 75c. each, \$7.00 per 10.

SWEET BRIAR

Rosa rubiginosa. *The Native Sweet Briar.* Forms a tall bush, the leaves of which are very fragrant. Lovely, single pink flowers. Will grow in a wild or rocky place. 50c. each, \$4.50 per 10.

ROSA HUGONIS

Golden Rose of China. A new and very beautiful rose. Single yellow flowers in long, arching sprays. It has proved to be perfectly hardy in the north. Blooms in late May or early June several weeks before any other rose is in blossom. \$1.50 each, \$12.50 per 10; 3 to 4 ft. specimens, \$2.00 each.

POLYANTHA ROSES

Baby Ramblers, or Polyantha roses are fine for bedding purposes being continually in bloom. They are low growing, seldom attaining a height of more than 18 or 20 in. We offer strong, 2 yr. old plants of pink, white or red for 75c. each, \$7.00 per 10.

RAMBLERS

Dorothy Perkins. The ever popular Dorothy Perkins is one of the best and hardiest of ramblers, and lives through our northern winters almost without exception. Pink clusters of very double flowers. 50c. each, \$4.50 per 10.

Excelsa. A red flowered member of the Perkins family, sharing in their hardiness and vigor. Brilliant red double flowers. 50c. each, \$4.50 per 10.

White Dorothy. The white completes the trio. Pure white flowers in dense clusters. 50c. each, \$4.50 per 10.

American Pillar. A climbing rose having exceptionally large, glossy green foliage. Beautiful flowers in enormous trusses of clear wild rose-pink. 75c. each, \$7.00 per 10.



Polyantha Roses



Rambler Roses

Wichuraiana. *Memorial Rose.* A trailing rose, quickly covering the ground with its glossy, small green leaves. Used extensively in cemeteries. Single pure white flowers. 50c. each.

Crimson Rambler. Masses of double crimson flowers on long, heavy canes. The most widely planted climber. 50c. each, \$4.50 per 10.

Paul's Scarlet Climber. A wonderful new rose. Fully tried out in our nursery. Flowers large, in form and size like Dr. Van Fleet, or in other words, much like a hybrid tea. Color bright scarlet. 75c. each.

Dr. Van Fleet. Much like the hybrid teas in form and size. Flesh pink, deepening in the center. Beautiful as a cut flower, as the blooms are borne in sprays on long, strong stems. A basket of these flowers cut in the bud is a remarkably beautiful sight. 75c. each, \$7.00 per 10.

Tausendschön. *Rose of a Thousand Beauties.* Large, double flowers in great clusters varying from deep rose to shell pink. 50c. each, \$4.50 per 10.

Climbing American Beauty. Fully as large as the June roses. Color rose-red. Not a strong grower in many places. 75c. each, \$7.00 per 10.

Gardenia. Heavy trusses of lemon yellow flowers, fading to cream. Strong grower. 50c. each, \$4.50 per 10.

Mary Wallace. A new rose originated by Dr. Van Fleet. A pillar rose making a strong, self-supporting bush 6-8 ft. high. Foliage practically disease-proof. Blooms freely in June and to some extent throughout the summer and fall. Flowers semi-double, bright rose-pink, salmon-pink at base. The largest of the new climbing roses, often measuring over 4 in. across. Each \$1.00.

Silver Moon. Strong, vigorous canes with handsome, dark green, disease-resistant foliage. Very large, single white flowers. A beautiful rose and classed with the three best climbers. Requires protection here. 75c. each, \$7.00 per 10.

Dr. Huey. A magnificent new climber. Profuse clusters of deepest crimson maroon shaded darker. Praised and highly recommended by rosarians everywhere as the richest colored climber. \$1.00 each.



HARDY PERENNIALS

CARE AND PROTECTION

Prepare the soil deeply, and enrich with old manure, the older the better. Plants should not be planted below the crown. Too deep planting is the cause of many failures. Be careful, too, to firm the soil about the roots. Stamp the ground as hard as you can with your heel, or butt of the trowel. This point cannot be overemphasized. Air space about the roots is fatal, especially when the planting is done in the fall. Mulch every year with a thick covering of manure.

As a rule, early spring blooming perennials should be planted in the fall; while fall blooming ones, such as Japanese anemone, require spring planting. On the whole, however, fall is a far better time to plant than is generally realized. Often much time is gained by planting in late September through October, giving plenty of time for root growth before winter comes. In this way the spring growth is not disturbed and as a result earlier and better flowers are obtained.

Some plants usually classed as perennials are, in reality, biennials, completing their life cycle in two years. If a biennial fails to blossom the second year, it will live for another season, blossom and die in its third year. All biennials are mentioned as such, in the descriptions following.

Note—Not less than 6 of 1 variety and color at the dozen rate; not less than 25 of 1 variety and color at the 100 rate, where the 100 rate is given

ACHILLEA. The Pearl

- A. **ptarmica**. 2 ft. Pompon-shaped, white flowers throughout the summer. Easily grown border plant. Good cut flower.
- A. **millefolium roseum**. (Rose Yarrow). Bright rose-pink. Blossoms throughout the summer.
- A. **Tomentosum**. Dwarf, rock garden plant for hot, dry location. Yellow flowers. 6 to 10 in.

ACONITUM. Monkshood

- A. **fischeri**. 18 to 24 in. A dwarf monkshood, valuable for its late blooming. Immense, pyramidal clusters of large, bright blue flowers from September until late Fall. Does well in a fertile corner of the rock garden or in the foreground of the border.
- A. **napellus**. Height 3 to 4 ft. Compact masses of deep blue, helmet-shaped flowers in July and early August.
- A. **napellus bicolor**. Hood and base are differently colored in blue and white, otherwise identical with *napellus*. Colors are clear and distinct, the effect being both beautiful and unusual. Offered for Fall 1929 only. 60c. ea., \$6.00 per 12.
- A. **Spark's Variety**. 4 to 6 ft. A tall, much-branched Monkshood. Dark navy blue during August. Beautiful as a background for phlox.

Price, any *Aconitum*, 35c. each; 90c. per 3,
\$3.50 per doz.



Aconitum fischeri

Price, any of the above, except as noted, 25c. each, 3 for 60c., \$2.00 per 12, \$15.00 per 100

ACTAEA. Baneberry

Both the Baneberries are useful for shady spots in the rock or wild garden, and afford attractive color at a time often lacking in interest.

White Baneberry. *A. alba.* 1 to 1½ ft. White flowers in racemes followed by effective clusters of white berries on bright red stems in late Summer.

Red Baneberry. *A. rubra.* 2 ft. Large clusters of bright red berries in August.

AEGOPODIUM

A. podagraria. A variegated plant much used for edging purposes. Green and white leaves. An excellent ground cover for sun or shade, especially for bare spots under shrubbery or near walls or buildings. In quantity, \$10.00 per 100.

ALYSSUM. Basket of Gold

A. saxatile. 10 in. May. Low, sprawling habit. In May the gray-green leaves are buried beneath masses of tiny golden flowers. In bloom in tulip time. Good for the front of the perennial border or among Spring bulbs, as well as being a rock garden plant of the very highest value.

ANCHUSA. Alkanet

A. barrelieri. 2 to 2½ ft. Neither so tall nor so coarse as the others and a true perennial form. Masses of gentian-blue flowers on stems well suited for cutting, and in bloom by Memorial Day.

A. italica, var. **Droptmore.** 4-5 ft. June. Tall, branched growth. A large biennial having coarse leaves, and gentian-blue flowers. At a little distance the wonderful blue effect of this flower is unequaled.

ANEMONE. Windflower

A. cylindrica. *Lamb's Wool.* 2 ft. Summer blooming variety for full sun. White flowers followed by seed tufts of snowy white wool, lasting on the plant for some time.



Anemone Sylvestris Snowdrop Anemone



Anemone pulsatilla Pasqueflower

A. hupehensis. *Chinese Anemone.* A beautiful and valuable addition to the list of Fall flowers. Foliage and blossoms similar to japonica, but smaller, more compact and more floriferous. Color bright rose, blooming from late August until after heavy frost. Plant in Spring. 30c. each, 75c. per 3, \$2.50 per doz., \$20.00 per 100.

A. japonica. 3 to 4 ft. October. Lovely flowers like single roses, borne on long stems, well above the foliage mass. Soft, luminous colors in old rose, white and crimson. They prefer partial shade and soil mixed with leafmold. Keep their roots well mulched with leaves. Plant only in the Spring. Any of the above colors, 30c. each; 75c. per 3, \$2.50 per doz., \$20.00 per 100.

A. pulsatilla. *Pasqueflower.* 9 to 12 in. Long, violet-blue flowers in May, from a sheath delicately covered with silky, finely curling tendrils of silvery green. Especially fine for the rock garden. 30c. each; 75c. per 3, \$2.50 per doz.

A. quinquefolia. *Native Windflower.* 6 to 9 in. Dainty, nodding, white flowers in early Spring. For the woods or shady rock garden. Excellent for naturalizing under shrubbery. Quantity price \$10.00 per 100.

A. Sylvestris. *Snow drop Anemone.* A rock garden plant, which prefers partial shade. Pure white nodding flowers, and inch and a half across. Late May and June; 12 to 18 inches tall.

ANTHEMIS. Marguerite

A. tinctoria kelwayi. 2-3 ft. Compact, fernlike foliage, from which rise brilliant masses of single, bright yellow flowers like daisies from June through August. Succeeds well in a dry soil and among rocks.

Price, any of the above, except as noted, 25c. each, 60c. per 3, \$2.00 per 12, \$15.00 per 100

AQUILEGIA. Columbine

Among the most popular perennials. It blooms in May in iris time. The flowers have an airy grace, unlike any other plant. Handsome foliage, green throughout the Summer. Plants increase about double their size the second year if given plenty of room. 2 to 2½ ft. May-June.

- A. chrysantha.** Clear yellow. Long-spurred. Blossoms continually all Summer.
- A. canadensis.** Native red and yellow. Long-spurred. One of the world's best rock plants.
- A. caerulea.** Rocky Mountain Columbine. Sky-blue and white flowers. Long spurs.
- A. glandulosa.** 1½ ft. Blue Siberian Columbine. Steady grower. Pale blue flowers. One of the best.
- A. nivea grandiflora.** Best white; short-spurred.
- A. Mrs. Scott Elliott's Hybrids.** Among these hybrids are to be found beautiful and delicate shades of coloring and great length of spurs and size of blossoms. Colors range through wine, purple, blue, blue and white, mauve, lemon yellow and shades of pink. 30c. each; 75c. per 3, \$2.50 per doz., \$20.00 per 100.
- A. Short-spurred Hybrids.** Much longer lived than the higher bred strains. Although the dark shades once predominated, bright rose, pink, silvery old rose and light blue are now prominent. Unexcelled for massing in the border.
- A. Shades of Pink.** Long-spurred hybrids of varying shades of rose and pink.

ARMERIA. Sea Pink

- A. maritima.** 12 to 18 in. Globular heads of rose-pink and white flowers on leafless stems. Excellent for cutting. Blooms all Summer.

ASCLEPIAS. Butterflyweed

- A. tuberosa.** 2 ft. Slender growth, branched from the ground. Large flower heads composed of tiny, wing-petaled florets, of brilliant orange. Enjoys a hot, dry location. Aug. Exceptionally bright and attractive.



Aquilegia, Long-spurred (Columbine)

ARABIS. Rockcress

- A. alpina.** 6-8 in. Pure white flowers, densely cover this plant in April and May. Blooms at tulip time and these do well together. The earliest flower to blossom in our nursery.
- A. alpina flore pleno.** Double Arabis. A double, pure white form of the above and more pretentious than the single kind. 30c. each, 75c. per 3, \$2.50 per doz.
- A. rosea.** Growth in small rosettes from which rise 3 to 4 in. flower stalks bearing heads of soft pink flowers. Early Spring. 35c. each, 90c. per 3.

ARTEMISIA.

- A. abrotanum.** Southernwood. Old Man. 2 ft. Deliciously scented foliage of finely cut glaucous green. Old-fashioned garden herb to be found with Sweet Mary, Beebalm, Rosemary and Lavender. 30c. each; 75c. per 3, \$2.50 per doz.
- A. lactiflora.** 5-6 ft. Numerous long racemes of cream-colored, delightfully fragrant flowers in August and early September. Splendid for cutting, in combination with other flowers.
- A. stellata.** Old Woman. Fragrant herb with soft grey green leaves. 2 ft.

ARENARIA. Sandwort

- A. montana.** Fills bare spots, cracks and crevices with dense carpets of tiny, bright green leaves. Excellent for flagged walks, or rock gardens. Small white flowers in July.

ARISAEMA. Jack-in-the-pulpit

- A. triphyllum.** 1 ft. A native plant, bearing curiously formed, black and green striped flowers in the form of a sheath, part of which droops down to protect the long, brown spathe within, thus giving the plant its name. Late May. Requires shade and moisture.

ASTER

- A. novae-angliae, or New England Aster.** 4 ft. Purple. Sept.-Oct. Tall growth, slightly branched, and spreading rapidly from the roots. This autumn-flowering plant is almost essential in the hardy garden. It makes a mass of beautiful color when flowers are scarce.
- A. novae-angliae roseus.** Rose-colored form, slightly larger and more double than the above. Either one of these is a beautiful companion for the white Boltonia.
- A. Climax.** 4 to 5 feet tall. Very popular. Bluish lavender.
- A. White Climax.** Like the above except in color.
- A. Maggie Perry.** Large flowered mauve colored variety.
- A. King of Belgians.** Light lobelia blue, 3 ft. tall.
- A. Sam Banham.** Very early. Flowers are feathery, pure white. 3 ft. tall.
- A. St. Egwin.** Soft pink, 2 to 3 ft. high and compact in growth.



Aster St. Egwin

Price, any of the above, except as noted, 25c. each, 60c. per 3, \$2.00 per 12, \$15.00 per 100



Astilbe Gladstone

ASTILBE. Garden Spiraea

A. arendsi Hybrids. A group of hardy plants we consider invaluable for the hardy border and for cutting. The foliage clumps are persistently green and attractive and in June the plants send up feathery plumes of dainty flowers to a height of 2 ft. or more. They prefer a moist soil but are not overly particular. Florists often force this for Easter decoration.

A. Gladstone. Delicate, branched sprays of snowy white.

A. Granat. Dense flower spikes of crushed strawberry color.

A. Kriemhilde. Lovely shade of soft salmon pink.

Price, any of the above Astilbes, 50c. each, \$5.00 per 12

AUBRIETIA. Wallcress

A. Hybrids. 6 in. Bright-flowered, creeping perennial, blooming in earliest Spring. Clusters of flowers in purple, rose, and blue. First-class rock plant for Fall 1929 only.

BAPTISIA. Wild-indigo

B. australis. 2-3 ft. June. Has shapely clumps of persistently attractive foliage and erect sprays of dark blue flowers shaped like sweet peas.

B. bracteata. *Cream Wild-indigo.* Cream-colored blossoms entirely covering the plant. May-June. 1½-2 ft. high.

B. leucantha. *White Wild-indigo* White, pea-shaped flowers on drooping branches. July.

BLEEDINGHEART. See *Dielytra***BOLTONIA.** False-starwort

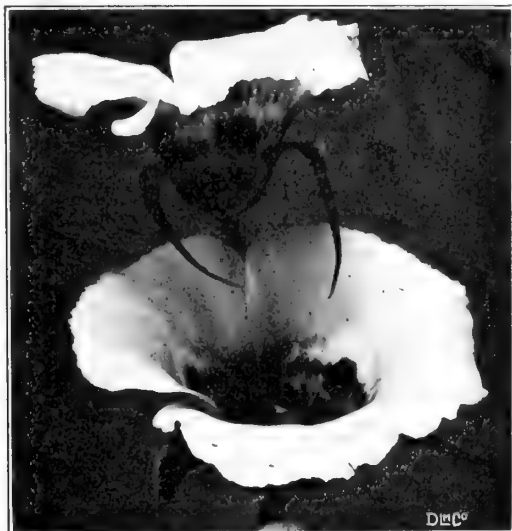
B. asteroides. 5-6 ft. Sept.-Oct. The tall stalks are surmounted by immense branched heads of flowers, similar in form to hardy asters. Pure white

B. latiquama. Delightful mauve-pink. Neither so tall nor so rampant a grower as the above. Perfectly hardy and of easy culture.

BOCCONIA. Plumepoppy

B. cordata. 6 to 8 ft. Big, feathery heads of creamy white flowers. Tall, upright habit. Used extensively for the backgrounds of perennial borders.

Price, any of the above, except as noted, 25c. each, 3 for 60c., \$2.00 per 12, \$15.00 per 100



Calochortus venustus (Mariposa Tulip)

CALIRRHOE. Poppy Mallow

C. involucrata. Low, sprawling habit with clear, magenta colored flowers along the prostrate stem. Blooms throughout the summer and the flowers somewhat resemble small hollyhocks. Likes a hot, dry location in full sun. A western prairie flower suitable for dry banks or the less choice positions in the rock garden. Hardy biennial, resowing itself.

CALTHA. Marshmarigold

C. palustris. For planting in swampy places in the sun. Bright, golden yellow flowers in May. Quantity price, \$10.00 per 100.

CALOCHORTI.

Bulbous plants, hardy when protected with leaves or sod. In the East they bloom in June and July. They are also fine house bulbs as they will blossom well if potted up in the Fall and cared for in a warm room. The flower tints are exquisite. Shipped only in the Fall.

GLOBE-TULIPS

C. albus. *Fairy Lantern.* Rather dwarf by nature, growing about 8 in. tall. Pure white with dainty fringe. 25c. per 3, 75c. per doz.

C. amabilis. Rich butter yellow. 25c. per 3, 75c. per doz. Shipped only in the Fall.

MARIPOSA TULIPS

C. venustus. These lovely flowers are named for the Spanish word for butterfly. The markings on their petals are similar in beauty and delicacy to those on a butterfly's wings. Slender stems, 12-18 in. tall, each bearing a cup-shaped flower of ivory white, marked with rose purple or crimson at the center. Fine for cutting. 15c. each, 40c. per 3, \$1.25 per doz. Shipped only in the Fall.

CAULOPHYLLUM. Cohosh

C. thalictroides. *Blue Cohosh.* A native of the rich woods, making an attractive plant 2 ft. high. The small, yellow flowers with purple sepals are attractive in early spring and are followed in late summer by clusters of intensely blue berries.

CAMASSIA

- C. esculenta.** A bulbous plant from the West. Cream-colored flowers on slender stems rising from grassy foliage.
- C. leichtlini.** Bright deep blue. Plant both Camassias in the Fall. Very rare. Price 50c. each, \$5.00 per 12.

CAMPANULA. Bellflower

- C. carpatica.** *Carpathian Harebells.* 8-12 in. June-Oct. A true perennial. This variety grows in a compact form which recommends it for an edging plant or for the rockery. From the foliage tufts rise the slender flower stems, each bearing a pretty, bell-shaped blossom.
- C. carpatica alba.** White flowered form of above.
- C. medium,** or **Canterbury-bells.** 2 ft. June. One always expects to include this old garden favorite in any hardy garden. Large, bell-shaped flowers, held upright on stiff stalks. Biennials. Pink, white, light and dark blue.
- C. medium calycanthema.** *Cup-and-saucer Canterbury-bells.* These are increasingly popular in form semi-double, giving the flowers the appearance of a cup and saucer. Hardy biennials. Pink, white, or blue.
- Mixed Canterbury-bells.** 15c. each, \$1.50 per doz., \$12.00 per 100.
- C. persicifolia.** *Peachbells.* Blue or white, bell-shaped flowers on tall, graceful stalks. A true perennial, and much more graceful than the canterbury-bells. Establishes itself permanently in any good sunny or half shady position. Fine for cutting.

- C. rotundifolia.** *Bluebells of Scotland.* Blue. June-frost. This is the true harebell, and grows native to some parts of the country, living in tiny soil pockets of the rocky ledges. The stems are very slender, almost hairlike, and the myriad, tiny, bell-shaped flowers which they bear are clear blue. Good border plant. Will grow in sod.



Campanula rotundifolia (Bluebells of Scotland)

- C. rapunculoides.** *Coventry-bells.* Dainty spikes of lilac-blue, down-drooping, small, bell-shaped flowers during July and August. Will thrive in a neglected place or among shrubbery. Spreads from the roots.

CARNATIONS

- C. Dwarf Vienna.** *Hardy Carnations.* A race of hardy carnations which we have tried out for several years in the nursery with pleasing results. Somewhat smaller than the greenhouse varieties, otherwise identical with them. Colors red, crimson, pink, white, yellow and an occasional bicolor. Very fragrant and one of the best in the list for cut flowers. We offer bright red, white and pink in separate colors, at the regular price. Mixed colors, 15c. each, \$1.50 per 12.

CENTAUREA. Bachelor Button

- C. montana.** Hardy, continuous blooming plant bearing large, blue flowers on long, strong stems; fine for cutting.
- C. macrocephala.** *Caucasian Bachelor Button.* A strong, hardy species having large, compact growth 3 to 4 feet high. The flowers are borne freely; large, very clear lemon-yellow; identical in shape with the large thistle.
- C. dealbata.** 18 to 24 in. high. Flowers rosy pink to nearly red. Blooms in July and August.

CERASTIUM. Snow-in-summer

- C. tomentosum.** Ground cover. This little plant has attractive, gray-green foliage and in May and June is covered with miniature bell-shaped, white flowers. One of the best rock plants.

CHEIRANTHUS. Siberian Wallflower

- A. allioni.** 1½ ft. May and early June. Flower heads bright orange and very fragrant. Lasts for a long time as a cut flower. Hardy biennial, resowing itself every year. Splendid for rock gardens.



Hardy Chrysanthemums (See page 39)

Price, any of the above, except as noted, 25c. each, 3 for 60c., \$2.00 per 12, \$15.00 per 100

CHELONE Turtlehead

- C. glabra.** Pure white flowers in midsummer.
C. lyoni. Bright rose-pink flowers. Very large and conspicuous. 2 ft. Aug. and Sept.

HARDY CHRYSANTHEMUMS

No garden seems quite complete without them. In our northern climate many varieties do not have time to blossom. Below we offer a few varieties which have proved satisfactory here.

- Clara Jamieson.** Unaffected by frost. An invaluable kind. Autumn coloring in bronze, yellow and red. Pompon.
Red Indian. Large flowers. Red. Very early.
Glory of Seven Oaks. Early flowering bright yellow.
White Midget. Pompon-flowered; pure white.
Niza. Early pink.
Baby. Yellow button-flowered. Old-fashioned and very popular.
Little Bob. Bronze red button; very early.
All Chrysanthemums are 30c. each; 75c. per 3, \$2.50 per doz.

CIMICIFUGA. Snakeroot

- C. americana.** 1 to 3 ft. Branched racemes. Creamy white.
C. racemosa. Dense nodding racemes of cream white flowers. Does best in moist shade, but will thrive in sun.

CLAYTONIA. Springbeauty

- C. virginica.** 6 to 9 in. Early Spring-blooming flower of delicate beauty. Clusters of soft pink, starry blooms on drooping stems. Excellent for the wild garden. Shipped in the Fall. 20c. each, 50c. per 3, \$1.50 per doz., \$10.00 per 100.

CLINTONIA. Bluebead

- C. borealis.** Two or three large basal leaves from which rises, in May, the flower stem bearing five or six drooping, bell-shaped, cream-yellow blossoms, which are followed in summer by bright blue berries. Quantity price, \$10.00 per 100.

CONVALLARIA. Lily-of-the-valley

- C. majalis.** The valley lilies succeed in any shady spot and with no care bear the loveliest and most fragrant of flowers. Mulch them with manure, and you will be surprised at the increase in the size of the blossoms. Clumps, 60c. each. Single plants, 15c. each; 40c. per 3, \$1.50 per 12.

CORYDALIS

- C. glauca.** *Pale Corydalis.* 6 in. to 2 ft. high, having attractive divided foliage and many tiny pink flowers each tipped with yellow. Blooms late in May with the German iris and the two are very beautiful planted together, the habit of iris being strict and severe and the other airy and graceful. Hardy biennial, resowing itself.

COREOPSIS

- C. lanceolata.** 2-3 ft. Forms large, dense clumps. Well known and very popular perennial, bearing rich yellow flowers, most profusely in June, but to some extent all summer if kept picked.

Price, any of the above, except as noted, 25c. each, 3 for 60c., \$2.00 per 12, \$15.00 per 100



Cimicifuga racemosa (Snakeroot)

CORNUS. Bunchberry; Cornel

- C. canadensis.** Invaluable ground cover for shady places. Masses of large, wide open white flowers followed by dense clusters of bright scarlet berries. 6 in. May. Price in quantity, \$10.00 per 100 clumps.

CORONILLA. Rosevetch

- C. varia.** Heavy creeping vine for covering banks, stumps or rocks. Lovely clusters of soft pink pea-shaped flowers throughout the season.

CYPRIPEDIUM. Ladyslipper

- C. acaule.** *Pink Ladyslipper.* 1 ft. Large, rose-pink moccasin-shaped flowers, on strong, stiff stems, which rise from two to three large, basal leaves. Easily naturalized in dry shade, doing well in the fern garden. Excellent for cutting. Late May and early June.
C. parviflorum. *The Yellow Ladyslipper.* Several flowers on one stalk. Offered for Aug. 35c. each, \$3.50 per 12, \$25.00 per 100.
C. spectabile. *Showy Ladyslipper.* Rose-pink. Many-flowered. 40c. each; \$4.00 per 12, \$30.00 per 100.

DAPHNE. Garlandflower

- D. cneorum.** A low growing, evergreen perennial or shrub, covering itself in May with rose-pink flower clusters. Intensely fragrant. Without doubt one of our most popular flowers, attracting attention continually. Blooms at regular intervals of two to three weeks all summer and fall. 6-10 in. plants, with ball of earth, 75c. each, \$8.40 per 12.

DELPHINIUM. Larkspur

- D. belladonna.** 4-5 ft. Long spikes of clear sky-blue. If not allowed to seed will bloom continuously until frost. Fine cut flower.
- D. bellamosum.** 4-5 ft. Color intense dark blue. Habit, exactly like belladonna of which it is a hybrid.
- D. grandiflorum.** *Chinese Larkspur.* 2 ft. A dwarf species with fernlike foliage and loosely spreading branches. Most beautiful shade of bright Copenhagen blue or white. Everblooming. Fine bedding plant and excellent for cutting.
- D. grandiflorum minor.** A small, compact form about 10 in. high, of great value for bedding purposes or for masses in the rock garden. Blue only. Offered for Fall only.
- D. nudicaule.** A dwarf scarlet larkspur. 18 in. Form similar to the Chinese variety. 35c. each; 90c. per 3, \$3.00 per doz.
- D. Pudor's Glory.** Large flowered hybrids apt to be light blue through varying shades to king blue. 50c. each; \$1.35 for 3, \$5.00 per 12, \$40.00 per 100.
- D. Wrexham Strain.** *Hollyhock Delphinium.* Immense spikes, closely set with giant hollyhock-shaped flowers. More dark blue colors in this strain. An English strain which has created a sensation wherever shown. 50c. each; \$1.25 per 3, \$5.00 per doz.

DIANTHUS. Garden Pinks

- D. barbatus.** See *Sweet-william.*
- D. caesius.** *Cheddar Pink.* Compact tufts of foliage and flowers like clove pinks. Of neater habit. One of the best rock plants.
- D. deltoides.** *Maiden Pink.* Beautiful, dark green foliage and tiny flowers of pink or white.
- D. Dwarf Vienna.** See *Hardy Carnations.*
- D. latifolius atrococcineus flore pleno.** *Everblooming Hybrid Sweet-william.* A brilliant, crimson-flowered pink, which blossoms continually. Often taken up to bloom in the house in the Winter. Good for the rock garden.
- D. plumarius.** 18 in. June. These are the old-fashioned pinks with their silver-gray foliage and clove-scented blossoms. Many colors.

DICENTRA

- D. canadensis.** *Squirrelcorn.* 8-10 in. Pale pink, heart-shaped flowers in earliest spring. Requires shade. 30c. per 3, \$1.00 per 12, \$8.00 per 100. May-frost.
- D. cucullaria.** *Dutchmans-breeches.* Cream colored blossoms in long racemes. Fernlike foliage. A native variety blooming in early spring. Requires shade. 1 ft.
- D. eximia.** *Fringed Bleedingheart.* 1 ft. A low growing variety, with fernlike foliage. Rose-pink, blooms every month. May-frost.
- D. spectabilis.** *Bleedingheart.* 2 ft. Long racemes of rose-colored heart-shaped flowers in May. A lovely and graceful perennial, fine for cutting. 50c. each, \$5.00 per 12.

Price, any of the above, except as noted, 25c. each, 60c. per 3, \$2.00 per 12, \$15.00 per 100



Dicentra spectabilis (Bleedingheart)

DICTAMNUS. Fraxinella

- D. fraxinella.** A hardy plant resembling somewhat the peony in nature of growth and in foliage, which is a rich dark green. In May and June racemes of reddish purple flowers appear, whose wing petals and long, upcurling stamens greatly resemble the azalea.
- D. fraxinella alba.** Pure white form of the above. A more valuable color. Dictamnus is a plant of permanent value increasing in beauty each year. Either of the above, 35c. each, \$3.50 per 12.

DIGITALIS. Foxglove

- D. gloxiniaeflora.** 4-5 ft. An essential member of the hardy garden family. The tall, stately spires give distinction to any garden. June-July. Colors white or rose, at regular price. Biennial, resowing itself. Mixed colors, 50c. per 3, \$1.50 per 12, \$12.00 per 100.
- D. grandiflora.** *Yellow Foxglove.* True perennial. Soft yellow flowers. 1-2 ft. Blooms in July.
- D. lanata.** *Gnomeflower.* Curious and distinct. Buff and white flowers smaller than the above. Hardy biennial.

DORONICUM

2 feet. Clear, yellow flowers in early May. Very bright and attractive. Somewhat of the appearance of a yellow Shasta daisy. 50c. each.

DODECATHEON. Shootingstar

- D. media.** A western prairie flower having dainty, rose-purple flowers during May and June. 1-2 ft.

ECHINOPS. Globethistle

E. ritro. Metallic-blue flowers which are useful for dried bouquets. 3-4 ft. June to Aug.

ELYMUS. Lyme Grass

E. glaucus. Blue Lyme Grass. 3 to 4 ft. Blue-gray, grassy foliage wonderfully effective in combining colors in the hardy border.

EPIGAEA. Trailing Arbutus

E. repens. Creeping evergreen plants with deliciously fragrant pink and white flowers in earliest Spring. Plant at any time after the bloom is gone until Summer, and again in the Fall when the new growth is matured. Clumps, 75c. each, \$7.50 per doz.

ERYNGIUM AMETHYSTINUM

Seaholly

E. amethystinum. Thistle-like heads of glistening amethyst-blue. 2-3 ft. July-Sept.

ERYTHRONIUM

Troutlily—Adderstongue

E. americanum. 10 in. Yellow, bell-like flowers in May. Increasing in popularity as a cultivated flower. Plant in dry shade or in sun.

EUPATORIUM

E. coelestinum. Mist flower. Beautiful blue flower heads in Autumn. The flowers seem like enlarged portraits of the blue ageratum.

E. perfoliatum. Boneset. By the borders of a pond in company with joe-pye-weed the old time standby of the "herb-closet" lifts its white flowers about to the shoulders of its purple flowered brother.

E. purpureum. Joe-pye-weed. Big brother of the eupatorium family grows from 4 to 6 ft. tall. Blossoms are reddish-purple and take a commanding part in arranging the late August landscape.



Dodonaea viscosa. (Shootingstar) (See page 40)

E. urticaefolium. Snow Thoroughwort. This and the mistflower seem to be the feminine members of their family for their fine, graceful flower-heads are quite different from the rough and ready appearance of boneset and joe-pye-weed. Snow thoroughwort loves moist shade where the pure white of its flowers is intensified.

HARDY FERNS

There are still many corners and out-of-the-way spots which are bare and ugly by reason of dense shade. These are ideal places for a collection of hardy ferns. Plant with them a few violets, forget-me-nots and ladyslippers and perhaps a collection of wild flowers.

In the background should be the tall, luxuriant ostrich ferns and in front of them may be planted Interrupted, Cinnamon or Royal ferns. In the foreground should be the Christmas or sword fern and the maidenhair, with a conspicuous clump of evergreen wood fern, for these are always green and attractive.

Among rocks plant clumps of ebony spleenwort. You will be surprised by the erect beauty of its graceful fronds. The tiny oak fern should have a place, especially if you are making a collection, because it is rare in most sections of the country.

Price of ferns, except as noted is 25c. each; 60c. per 3, \$2.00 per 12, \$15.00 per 100.

Maidenhair Fern. *Adiantum pedatum.* In pockets of leafmold among the rocks, the Maidenhair fern is most at home. It prefers shade.

Christmas Fern. *Polystichum acrostichoides.* Dark green evergreen fronds growing among the rocks in the rich woods. The 12-inch fronds are sold commercially as Dagger Fern.

Leather Woodfern. *Dryopteris marginalis.* Leathery evergreen leaves give this fern its name. Fifteen inches tall and easy to grow if given shade.

Toothed Woodfern. *Dryopteris spinulosa.* The fancy fern of commerce, known to every florist and gathered by millions each fall. Practically evergreen. Grows to 18 in. and is best in the moist woods.



Price, any of the above, except as noted, 25c. each, 60c. per 3, \$2.00 per 12, \$15.00 per 100

HARDY FERNS—Continued

Ebony Spleenwort. *Asplenium platyneuron*. The slender fronds of this delicate fern add immensely to the attractiveness of the shaded rockery. 35c. each 3; for \$1.00, 12 for \$3.00.

Maidenhair Spleenwort. *Asplenium trichomanes*. A dainty fern of tiny proportions and quite rare. Spreading fronds of deep greens, with ebony stems. Ideal for moist shaded rocks. 50c. each, 12 for \$5.00.

Royal Fern. *Osmunda regalis*. Tall branching fronds of vigorous habit. Best in moist ground with partial shade, but grows almost anywhere.

Cinnamon Fern. *Osmunda Cinnamomea*. Rich open land or the woodland border is agreeable to this fern which grows four feet tall with wide spreading fronds.

Interrupted Fern. *Osmunda claytonia*. A giant osmunda growing to the height of 5 to 6 ft., with fronds broad in proportion.

Sensitive Fern. *Onoclea sensibilis*. Something of a nuisance in the hayfield, where it is erroneously called "polypod," the Sensitive Fern if planted in moist shade will attain a height of 3 ft. and is truly commanding in appearance.

FILIPENDULA. Garden Spiraea

F. hexapetala. *Dropwort*. Creamy white flower with rosy tint. July. 2 ft.

F. ulmaria. *Queen of the Meadow*. A pure white flower similar to *F. rubra* in height and size. June-July.

F. rubra. *Pink Spiraea*. A tall perennial bearing in July, feathery plumes of deep old rose flowers. 4-6 ft.

FESTUCA

F. glauca. *Blue Fescue* or *Lyme Grass*. About 18 in. tall and valuable as an ornamental grass.



Gentiana andrewsii (Blind Gentian)

Ostrich Fern. In full sun or partial shade, this native of the northern river banks and hollows may reach a height of six feet. Its size does not make it less graceful.

Bracken. *Pteridium aquilinum*. Also called the Eagle Fern. The three parted stalks grow two feet or more on the open hillsides.

Hayscented Fern. *Dennstedtia punctilobula*. Fragrant, graceful fronds a foot tall grow in mats in sun or partial shade. Small sods about three inches across are sent with the plants.

Polypody. *Polypodium vulgare*. A miniature evergreen rock fern growing only 6 in. high. Needs shade.

Oakfern. *Dryopteris linneana*. Very dwarf, uncommon fern growing 4 to 6 in. high. Spreading fronds. Price 35c. each; 3 for \$1.00, 12 for \$3.00.

Rattlesnake Fern. *Botrychium virginianum*. This fern, sometimes called Grape Fern will grow in either sun or shade. Its fall growth is attractive. Height, 8 to 12 in.

FOXGLOVE. See *Digitalis*FORGET-ME-NOT. See *Myosotis*FUNKIA. See *Hosta*

GAILLARDIA. Blanketflower

G. grandiflora. 2 ft. June-frost. Large, single flowers similar in form to giant daisies. Crimson, with a yellow band around the center. Very gorgeous.

GENTIANA. Gentian

G. andrewsii. *Blind Gentian*. 1½ ft. A bright blue species, the corolla of which never opens.

GERARDIA: False Foxglove

G. virginica. Woodland plant growing to a height of two feet or more and branching freely. Covers itself with bright yellow tubular flowers in late summer and early fall. 40c. each; 3 per \$1.10, \$3.00 per 12.

GOLDENGLOW. See *Rudbeckia*

GYPSOPHILA. Babysbreath

G. paniculata. 2-3 ft. July-Aug. Tiny, misty-white flowers. Very good for cutting.

G. repens. A creeping species with flowers like the annual kind. Rock garden plant.

G. paniculata Bristol Fairy. A famous variety of double Babysbreath. Flowers snow-white and fully double. Will bloom almost continually if kept cut. 75c. each, \$7.50 per 12.

HABENARIA. Fringed Orchid

H. fimbriata. A larger and much brighter colored flower than *H. psychodes*. 35c. each, \$3.50 per 12.

H. psychodes. Tall spikes of lovely lavender-fringed flowers in July. 35c. each, \$3.50 per 12.

Both *Habenaria* offered for Fall 1929 only.

Price, any of the above, except as noted, 25c. each, 60c. per 3, \$2.00 per 12, \$15.00 per 100

HELENIUM

H. autumnale. 5-6 ft. Splendid, brilliant yellow flowers in autumn. Blooms at the same time as the hardy asters. Valuable late flowering perennial.

H. autumnale. *Riverton Gem.* Old gold overlaid with rich Indian red. Splendid effect of autumn coloring. A very popular variety, blooming in Sept.-Oct. 3-4 feet tall.

HELIANTHEMUM. Rockrose

H. mutabile. Low growing, wide spreading plants of sturdy growth and evergreen foliage. Densely covered throughout the season with single and semi-double flowers, ranging in color through white, pink, red, yellow and saffron. Flowers resemble small wild roses. A sun-loving plant, quite resistant to drought.

HELIOPSIS. Hardy Zinnia

H. scabra zinniaeflora. Zinnialike semi-double flower of orange-yellow. 4 to 5 ft. Aug.-Sept.

HELIANTHUS. Sunflower

H. Miss Mellish. 4 ft. Autumn-flowering. Lemon-yellow, semi-double flowers in greatest profusion. Long stems. Valuable cut flowers.

HEMEROCALLIS. Daylily

H. fulva. *Tawny Daylily.* Orange, with deeper shadings. Each of these lilies seems to have been very popular in old-fashioned gardens. The tawny variety is often seen by abandoned houses.

H. flava. *Lemon Daylily.* Lemon lilies are among the most popular of the old-fashioned flowers. Lemon-scented, clear yellow flowers in June and July, lilylike in form. 3-4 ft.

H. thunbergi. *Japanese Daylily.* A variety similar to "flava," having the same clear color and delightful fragrance. It blooms a month later.



Hepatica acutiloba



Giant Flowering Hibiscus (Mallows)

HEPATICA

H. triloba. 6-8 in. May. A very shy and dainty early Spring flower. Blue flowers and rounded leaves.

H. acutiloba. Flowers varying through white, blue, and rose. Leaves pointed. Plant both of these varieties in dry shade. Price in quantity, either of above, \$12.00 per 100.

HESPERIS. Sweet-rocket

H. matronalis. 3-4 ft. May-June. Sweet-scented flowers, somewhat resembling the hardy phlox. Lavender, rose or white. Mixed colors only.

HEUCHERA. Coralbells

H. sanguinea. 12 in. A very dainty perennial bearing in June and July sprays of tiny, bell-shaped flowers of soft coral-red. 35c. each, \$3.50 per 12.

HIBISCUS. Mallows

H. New Giant Flowering. 3-5 ft. July-Aug. Huge, single flowers, like mammoth hollyhocks, of crimson, pink or white. Mixed colors at regular price. Separate colors labeled when in bloom, 50c. each, \$5.00 per 12.

HOSTA. Plantain-lily

H. caerulea. The old-fashioned large leafed Blue Daylily.

H. plantaginea grandiflora. *White Daylily.* 1½-3ft. Aug.-Sept. A formal plant, with large, golden green leaves, and fragrant flowers, growing like trumpets from the stalk. 50c. each.

H. undulata variegata. *Var. Daylily.* A variegated-leaved variety, having blue flowers.

Price, any of the above, except as noted, 25c. each, 60c. per 3, \$2.00 per 12, \$15.00 per 100



Hemerocallis Flava

of snow-white flowers in late May and June. A border plant of unusual value for edging.

Plant with arabis or alyssum, as this blooms soon after they are done.

I. gibraltarica. Large, delicate lilac flowers in early Spring. 1 ft.

IRIS

Some people do not realize that there are iris which bloom in April and May, and also in late June and July when the better known kinds are gone. A plant of iris will grow and succeed under the most adverse conditions, but will spread rapidly and blossom profusely, if kept thoroughly cultivated and given a light, well drained soil. Although in many species a water-loving plant, most of the common varieties do not like a wet soil. Among these are the tall bearded iris offered below.

Japanese Iris revels in a rich heavy soil not too dry.

APRIL AND EARLY MAY FLOWERING

- I. cristata.** Very dwarf, creeping species only 3 in. high. Amethyst-blue. A well established clump, looks like a patch of blue sky. Late April and early May.
- I. pumila.** Dwarf iris blooming in earliest spring at the same time as the arabis and the daffodils. rich purple.
- I. pumila alba.** Pure white form.
- I. pumila caerulea.** A tiny iris, 4 in. high. Light purple standards and darker falls.
- I. verna.** A miniature iris having blue flowers with golden centers. 25c. each, 65c. for 3, \$2.50 per 12.
- I. cristata alba.** An extremely desirable variety of dwarf iris, and almost impossible to obtain. Just like its sky-blue brother, only pure white. We do not care to sell any of this variety this spring, but for late summer, will have a limited number of divisions to offer at \$2.00 each.



Iris cristata

Price, any of the above, except as noted, 25c. each, 3 for 60c., \$2.00 per 12, \$15.00 per 100

HOLLYHOCKS

Few gardens ever grew without their row of stately hollyhocks somewhere in the background. There is unusual charm in the single varieties and often delicate shades of lavender or lemon-yellow may be found among them. 6-8 feet. July-Aug.

Double White, Red and Yellow, Single White, Red, Pink and Yellow.

Newport Pink. Very double, bright pink.
Single Mixed.

HYACINTHUS. Garden-hyacinth

H. candicans. A beautiful garden flower, growing from a large bulb. Of easiest culture in any good soil. Does well in the perennial garden. Pure white, drooping, bell-shaped flowers clustered about a tall, erect stalk. 3 to 4 ft. high. Adds distinction to any garden. Plant in the Spring only. It is best to store this in the Winter, in the north. \$1.00 per doz.

IBERIS. Hardy Candytuft

I. sempervirens. 8-10 in. Low, dense habit; beautiful, glossy, evergreen leaves and clusters

IRIS—Continued

TALL BEARDED IRIS

Enthusiastic hybridists have done much to improve the old-fashioned iris, and today there stands with the few old kinds of merit such as pallida dalmatica and flavescens many regal beauties which, because of price, the average gardener cannot afford to buy.

To be admitted at all to the ranks of the newer and better iris, each kind is subjected to severe tests as to foliage, growth, stalk, flower and color. Of these, some have been offered to the public long enough for the supply to have become sufficient, and the price has naturally dropped to that of the average peony. Nothing is of more general interest to flower lovers than a number of these, to which more kinds may be added each year.

Afterglow. Standards and falls misty lavender lighted with soft yellow at center. A dainty iris, beautiful as a foil for the more striking colors 3 to 4 ft. 50c. each.

Alcazar. Standards light blue-violet; falls, deep brilliant purple. Of tall, branching habit, attaining a height of over 40 in. 40c. each.

Amas (Macrantha). S. light blue; F., velvety violet-blue. 35c. each.

Ambassadeur. Height 40 in. Standards reddish-violet. Falls deep velvety reddish-violet. Large flowers. Tall, strong growth. One of the best. \$1.00 each.

Athene. Ivory-white. Haft and claw veined maroon on cream, beard yellow. Strong grower of fine form. 33 in. 50c. each.

Aurea. S. and F., bright golden yellow. The standard yellow iris, although of dwarf growth. 2 ft. 30c. each.

Caprice. S., rosy claret; F., a deeper shade. Very rich and handsome color in an iris. 2 ft. 25c. each.

Celeste. 30 in. A dainty variety for massing in the garden. Light blue flowers in profusion. 25c. each.

Cluny. 40 in. Handsome and tall growing, flowers of largest size, standards bright shade of lilac-blue, falls darker. 75c. each.

Corrida. 36 in. Aniline blue. A shade darker than Celeste. Very dainty in effect and one of the best for massing. 50c. each.

Crusader. 42 in. A tall iris and certainly one of the most beautiful; bold, clear blue with an orange beard. We consider this the bluest iris. 60c. each.

Dream. 36 in. Called the "Pink Pallida." Soft, clear pink, petals of solid substance. \$1.50 each.

Early Purple. The old-fashioned rich purple in bloom on Memorial Day. One of the best of irises. 26 in. 25c. each.

E. H. Jenkins. Possibly the freest blooming iris. The tall, branching stalks and healthy growth immediately distinguish it. S. pale purple, F. deep purple. 45 in. \$1.00 each.

Fairy. Very attractive white flowers. Dainty pencillings of light blue at the base of the petals. 30 in. 25c. each, \$2.50 per 12.

Flammenschwert. *Flaming Sword.* S. bright gold, F. brilliant chestnut brown with yellow border. Vigorous and free flowering. Very striking variety. 30 in. \$1.50 each.



Tall Bearded Iris

Flavescens. An old-fashioned variety whose tall, strong growth and soft yellow color render it invaluable for massing with the rose, blue or purple kinds. 30 in. 25c. each, \$2.50 per 12.

Florentina alba. S. and F., pearly white with a faint blue cast. Very early flowering, being in bloom with the Darwin tulips and the early purple iris. These are very beautiful when planted together. 2 ft. 20c. each, \$2.00 per 12.

Georgia. 24 in. Very early pink with bright orange beard. Free flowering and vigorous. \$1.50 each.

Harriet Presby. S., bright violet-blue; F., petunia-violet, white beard. Coloring resembles an orchid. 4 ft. \$1.50 each.

Her Majesty. Rose-colored flowers veined a deeper shade. 30 in. 25c. each.

Innocenza. A small, dainty thing, dear to many iris lovers. Warm ivory-white, with a delightful flare at the falls which gives them a daintiness quite uncommon in an iris. 26 in. 50c. each.

Iris King. S., clear lemon-yellow; F., rich mahogany, bordered yellow. A most distinctive and richly colored iris. Large flowers and tall growth. 40c. each.

Isolene. S., lilac-pink; F., old rose with bright orange beard. Falls long and drooping. A very beautiful and distinct iris having large, stout-textured flowers, and handsome foliage. 36 in. 35c. each.

Jeanne d'Arc. White with lilac frill. 2½ ft. 30c.

Juniata. Said to be the tallest bearded iris. Clear blue self colored. Very fragrant. 35c. each.

Kashmir White. Height 4 ft. A giant pure white. Very free flowering and a strong grower. \$1.50 each.

Price, any of the above, except as noted, 25c. each, 3 for 60c., \$2.00 per 12, \$15.00 per 100

TALL BEARDED IRIS—Continued

La Neige (Snow). 24 in. Waxy white, with outstanding petals. We like it. 35c. each.

Lent A. Williamson. S., campanula-blue; F., rich royal purple. Yellow beard. Large, fine form and free blooming. 42 in. 50c. each.

Leonidas. An exceptionally dainty blue and purple iris; splendid for cutting. S. deep blue, F. rich purple. 30 in. 25c. each.

Lohengrin. S. and F. clear-toned, crisp lilac-rose. Large flowers and tall, strong growth. 30 in. 35c. each.

Lord of June. A very handsome iris of huge proportions. S., luminous, light-blue; F. blue. A beautiful iris and much sought after. 40 in. 75c.

Magnifica. S. light violet-blue, F. deep reddish violet with faint markings of brown; bright yellow beard. Sweetly scented. One of the most notable iris up to this time. 48 in. \$1.50 each.

Marsh Marigold. 27 in. S. pale golden-yellow, F. purple brown with bright yellow border. Unusual. 75c. each.

Ma Mie (My Friend). Like Mme. Chereau but much larger. White with feather stitching of clear blue. 35c. each.

Miranda. 44 in. Clear deep violet-blue. A notable color effect, perhaps the best in its class. 40c. each.

Mme. Chereau. A tall, free blooming iris. Flowers white with a dainty blue frill. 25c. each, \$2.50 per 12.

Mme. Chobaut. 36 in. Contrasting shades of amber and wine-red on a pale yellow ground. Very popular. 75c. each.

Monsignor. Distinct and rich coloring. S., un-veined violet; F., purple, richly overlaid violet. 22 in. 35c. each.



Japanese Iris

Mrs. H. Darwin. 24 in. Warm white with violet and chestnut veining at the base. Flowers densely set on the stalk, making it fine for garden effect. 25c. each.

Mt. Penn. S. rosy lavender, F. crimson lilac with brilliant orange beard. Extra rich coloring. 30 in. 75c. each.

Opera. Intense velvety reddish-lilac with falls darker. Instantly noticed among hundreds of iris. 60c. each.

Pallida dalmatica. Lavender-blue throughout, with a silvery sheen. Tall and large. A queen among iris. 25c. each, \$2.50 per 12.

Pallida Princess Beatrice. A selected form of dalmatica and frequently confused with it. This iris has the highest rating of any commonly offered, and by many is considered to be the nearest approach to a perfect iris. S., fine lavender; F., deep lavender. 50c.

Pauline. 36 in. S. and F. unusually large velvety pansy-violet; deep orange beard. Fragrant. 25c. each.

Prospero. S., pale lavender blended with soft yellow at base; F., rich reddish purple shaded lighter at edge. Heavily marked brown with bright orange beard. 4 ft. 75c. each.

Prosper Laugier. S., coppery-bronze; F., bright crimson; very distinct. 25 in. 50c. each.

Purple King. An early deep rich purple iris in bloom at the same time as florentina alba. A fine iris of perfect habit of growth and form. 2 ft. 25c. each, \$2.50 per 12.

Queen of the May. A lovely variety, which although there are no real pink irises, still is of such a soft lilac rose that at a little distance the effect is genuinely pink. 25c. each, \$2.50 per 12.



Iris sibirica (See page 47)

Queen Caterina. 30 in. Color iridescent lavender-violet with bright yellow beard. Large and striking. \$1.00 each.

Quaker Lady. S. smoky lavender with soft yellow shading; F. ageratum blue and old gold. One of the daintiest of iris and unexcelled for use with other more brilliant colors. 38 in. 35c. each.

Rheintraube. S. clear light blue; F. rich dark purple. Tall, strong growth. Over 3 ft. 75c. each.

Rhein Nixe. Snow-white standards and plum-colored falls. 25c. each, \$2.50 per 12.

Roseway. 4 ft. A deep rose-pink iris with the growth of pallida dalmatica. Bright orange beard. 75c.

Seminole. S. velvety rose, F. rich crimson. The best of the red toned iris and easily distinguished among hundreds. 2½ ft. 50c. each.

Shekinah. 36 in. Clear pale yellow. Good growth. The first tall yellow. \$1.00 each.

Sherwin Wright. A deep shade of chrome-yellow. 22 in. 30c. each.

Souvenir de Mme. Gaudichau. The rating of this iris is 9.3, which shows how high it stands in the estimation of the American Iris Society (10 points being perfection). One of the inner circle of aristocrats. Large and exceedingly rich velvety dark purple of fine form. 42 in. \$1.50 each.

White Knight. 33 in. Snow white, fragrant and of exceptionally fine form. 50c. each.

Note.—In the above descriptions, "S." signifies the standards or upright petals, and "F." the falls or drooping petals of the Iris.

Mixed Iris. 15c. each, \$1.50 per 12, \$10.00 per 100.

JAPANESE IRIS

Are among the leading perennials for glorious colors and large, beautiful flowers.

Gold Bound. Possibly the most beautiful. Pure snow-white with narrow yellow band. Large, six-petaled flowers greatly waved and ruffled.

Pyramid. Six petals. Light blue.

Old Rose. Deep rose. A fine variety. Six-petaled.

Azure. Double, light blue, deepening toward the center.

Mahogany. Rich velvety mahogany red.

Price any of the above, 35c. each; \$3.50 per 12.

VARIOUS SPECIES

I. ochroleuca gigantea. *Yellowband Iris.* A late July blooming kind; very tall and slender. Flowers slim-petaled, snow-white, with a narrow, golden band down the center. Exceptionally fine for cutting. 35c. each, 90c. per 3.

I. pseudacorus. *Yellowflag.* Bright yellow iris, similar to the Siberian and blooming in July. 30c. each. 75c. per 3.

I. sibirica. *Siberian Iris.* Deep blue flowers and masses of grasslike foliage; very effective. Fine for cutting. 25c. each; 60c. per 3, \$2.00 per 12.

I. sibirica alba. White form. Both late June and July blooming. 25c. each; 60c. per 3, \$2.00 per 12.

Price, any of the above, except as noted, 25c. each, 60c. per 3, \$2.00 per 12, \$15.00 per 100



Liatris spicata (Kansas Gayfeather)

I. sibirica, Var. Perry's Blue. A magnificent flower of clear blue with outstanding horizontal falls. One of the very best new hybrids. 4 ft. \$1.00 each.

I. sibirica Emperor. Large, deep violet. A splendid addition. 75c. each.

I. sibirica, Mme. Butterfly. Light blue to china blue. 75c. each.

I. versicolor. *The Native Blueflag.* Used for planting in wet places. 25c. each; 60c. per 3, \$2.00 per 12.

INCARVILLEA. Hardy Gloxinia

I. delavayi. A rare and very choice perennial, perfectly hardy here. Vivid rose-colored flowers in clusters like the gloxinia, although the growth is taller and larger. 50c. each, \$5.00 per 12.

LATHYRUS. Perennial Peas

L. latifolius. 3 ft. Similar to the well-loved sweet peas. Requires a support. No fragrance. Flowers in pink, white, or red.

LAVENDER

L. vera. *Old English Lavender.* An herb having deliciously fragrant leaves and flowers. Should be wintered in the cellar in this latitude. 30c. each; 75c. per 3, \$2.50 per 12.

LEWISIA

L. rediviva. Among the most beautiful of rock plants. They will, however, thrive in any soil not too heavy. Tiny plants with fleshy leaves and satiny-pink flowers similar in form to the waterlily. 30c. each; 75c. per 3, \$2.50 per 12. Plant only in early Fall.

LIATRIS. Kansas Gayfeather

L. spicata. 3-4 ft. Aug.-Sept. Vivid lilac flowers in dense spikes. Of easy culture in a sunny place.

GARDEN LILIES

It is a fact that Lilies are being planted more extensively each year as their beauty is being more fully appreciated and their needs more fully understood. They are divided roughly into two classes: those which root at the base of the bulb only, and those which root both at the base and from the stem above the bulb. Base rooting lilies may be planted at a shallow depth of two or three inches. Stem rooting varieties, however, should be in the ground to a depth of from six to ten inches, so that both sets of roots may be thoroughly covered away from dry surface soil and heat. All lilies are benefited by a pocket of sharp sand placed around and under the bulb. This conducts the extra moisture away and prevents rotting. They are heavy feeders and like rich soil, but manure should never come in contact with the bulbs as it rots them. Lilies like a mulch above them and often appear to best advantage when coming up through low shrubbery or perennial growth. This affords shade and protection from winds and driving rains. Do not plant in soggy locations.

L. auratum. *Goldband Lily.* Said by many to be the most popular lily grown. Grows 2 to 6 ft. high, and bears up to twenty large, very fragrant flowers of the wide open trumpet form. Color white with a gold band running down the middle of each petal. A clump of these is a sight long to be remembered. Blooms July-Sept. They arrive from Japan very late in the Fall, usually when the ground is frozen. It is well to pot them up in large pots and keep in coldframe over the Winter. They may also be planted in the Spring. Plant from 8 to 10 in. deep. 50c. each; \$5.00 per 12, \$35.00 per 100.

L. Batemanniæ. *Batemann Lily.* A late flowering variety of *L. elegans*, growing nearly 4 ft. tall and of a lovely apricot color. 50c. each, \$5.00 per 12.

L. canadense. *Meadow Lily.* A native lily which requires a moist situation. Tall stalks bearing eight to fifteen dainty yellow or orange blossoms. Blooms in July and August. 25c. each; \$2.50 per 12, \$15.00 per 100.

L. candidum. *Madonna Lily.* Handsome, large, very fragrant flowers of pure, spotless white. Quite similar in form to the Easter Lily of the florists. Perfectly hardy. Beautiful in the hardy garden. Blooms in late June and early July. Plant in the Fall, barely covering the bulb. 35c. each, \$3.50 per 12.



Lilium auratum (Goldband Lily)



Lilium superbum (Turkscap Lily) (See page 49)

L. dauricum. *Candlestick Lily.* Upright, large, wide open flowers on sturdy stalks, 2 ft. or more in height. Flowers are brilliant deep red. A fine garden variety, succeeding under the most ordinary conditions. June-July flowering. Fall or early Spring planting. 35c. each, \$3.50 per 12, \$22.00 per 100.

L. elegans, var. Orange. *Orange Cup Lily.* A hardy, dwarf lily which is excellent for garden planting. Erect, cup-shaped flowers of clear orange. Short, sturdy growth. 35c. each, \$3.50 per 12.

L. elegans, var. atrosanguineum. Similar to the above. Flowers bright crimson. 35c. each, \$3.50 per 12.

L. elegans Mixed. 25c. each, \$2.50 per 12.

L. grayi. Dark, orange red flowers. Good for garden culture and also for cutting. 25c. each, \$2.50 per 12.

L. henryi. A most satisfactory and hardy lily of easy culture in good garden soil. Strongly recurved petals of clear orange. Very profuse bloomer. 75c. each, \$7.50 per 12.

Price, any of the above, except as noted, 25c. each, 3 for 60c., \$2.00 per 12, \$15.00 per 100

L. philadelphicum. *Wood Lily.* A brilliant lily, gaining favor for garden planting; 2 to 3 ft. tall, bearing one or two large, upright red or orange flowers in July and August. 25c. each; \$2.50 per 12, \$18.00 per 100.

L. platyphyllum. An improved *Lilium auratum*. Snow white, very large, and practically unspotted. A marvelous lily. 50c. each, \$5.00 per 12.

L. regale. *Royal Lily.* Very hardy and one of the earliest lilies to bloom. Stalks 2 to 4 ft. tall, terminated by one to several trumpet-shaped blossoms, slightly shaded pink on the outside and white, shaded pale yellow within. The flowers are among the largest and finest of the lily family. Blooms in June and July. Plant either in Fall or Spring. 50c. each, \$5.00 per 12

L. speciosum rubrum. *Pink Show Lily.* A magnificent species and is one of the showiest of lilies. White suffused with dark old rose and heavily spotted rose-red. Plant deeply, either in Fall or Spring. Very hardy. 50c. each, \$5.00 per 12.

L. superbum. *Turkscap Lily.* A native lily. One of the finest and hardiest of this family. Often attains a height of 6 ft. and bears a great many flowers of rich orange, having darker spots. 25c. each, \$2.50 per 12.

L. tigrinum. *Tiger Lily.* Bright orange red flowers with recurved petals, carried on tall stalks, 2 to 5 ft. in height, three to twelve blossoms on one stalk. A perfectly hardy bulb of the easiest culture. 25c. each; \$2.50 per 12, \$18.00 per 100.

L. tigrinum fl. pl. Double form of the old-fashioned Tiger Lily. 35c. each; \$3.50 per 12.

L. tenuifolium. *Siberian Coral Lily.* A brilliant little lily which is quite easy of culture. Much recurved petals of waxy substance and brilliant scarlet in color. 1 to 2 ft. Early June-flowering. Plant in Fall or earliest Spring. 35c. each, \$3.50 per 12.

L. testaceum. *Nankeen Lily.* One of the most graceful and attractive of lilies. Soft nankeen yellow. In everything but color similar to candidum. Absolutely hardy. \$2.50 each.

LIMONIUM. Statice

L. latifolia. *Sea-lavender.* 1-1½ ft. July-Aug. Flat, broad leaves, from which rise flower stalks bearing huge heads of tiny lavender flowers.

LINUM. Hardy Flax

L. perenne. 2 ft. May and June. Graceful, gray-green foliage and round, single, porcelain-blue flowers, of an unusually beautiful shade. Blooms throughout the season. Looks well planted with iris.

LOBELIA Cardinalflower

L. cardinalis. Tall spikes of rich cardinal-red, blooming in August. For naturalizing along streams.

LYTHRUM. Rose Loosestrife

L. salicaria roseum. Long spikes of rose-colored flowers. Used for naturalizing in moist or wet places, or for the hardy border.



L. Tigrinum (Tiger Lily)

LUPINUS. Lupine

L. New Hybrids. Many new and unusual colors and bicolors. 30c. each; 3 for 75c., \$2.50 per 12.

L. polyphyllus. June. 2-3 ft. Masses of deep blue flowers on long, graceful spikes. One of the most important perennials.

L. polyphyllus albus. White form, very beautiful.

L. polyphyllus roseus. Rose-colored form of above.

LYSIMACHIA CLETHROIDES

Japanese Loosestrife

L. clethroides. 2 ft. Drooping, pure white flower spikes, blooming throughout the late summer and fall. Thrives in shade or sun.

L. nummularia. *Moneywort.* Rapid-growing ground cover with tiny, cup-shaped yellow flowers. For use on banks or under trees when grass will not grow. Price in quantity, \$12.00 per 100.

LYCHNIS. Maltse Cross

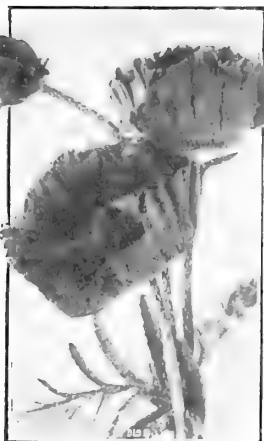
L. chalcedonica. Brilliant scarlet flowers in June.

L. coronaria. *Mullein Pink.* 3 ft. Upright, branched growth. A tall biennial having soft, gray-green foliage and single, amaranth-red flowers. Blooms in July.

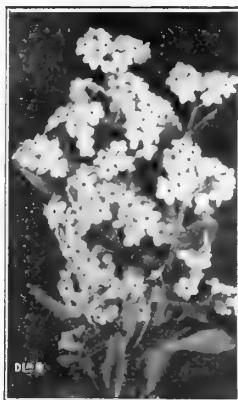
L. roseus. *Mountain Pinks.* An old-fashioned garden flower still to be found about old doorstones and in abandoned gardens. Rose, white, or blue flowers from June to midsummer.

L. viscaria. Said to be one of the most brilliant perennials. Bright, rose-colored flowers in upright panicles; during May and June.

Price, any of the above, except as noted, 25c. each, 3 for 60c., \$2.00 per 12, \$15.00 per 100



Papaver orientale
(Oriental Poppy)



Myosotis (Forget-me-not)

MERTENSIA. Virginia Cowslip

M. virginica. Beautiful, tubular flowers of clear sky-blue, sometimes tinted with pink. Blooms in early May. The roots may be taken up in the fall and made to blossom in the house.

MITCHELLA. Partridgeberry

M. repens. Trailing evergreen vine or ground cover with rich green, rounded leaves, waxy white fragrant flowers, tinged with pink, in June and July, and bright red berries in the Fall. Valuable for planting in rockeries or under evergreen trees. Sprays of this little vine are often put in bowls where the red berries keep fresh all Winter. Much used by florists. Quantity price, \$12.00 per 100.

MENTHA—Mint

M. peperita. *Peppermint.* An ever increasing demand for common peppermint plants prompts us to add this to our catalog.

M. spicata. *Spearmint.* Any New England boy would consider the trout fishing trip unsatisfactory if he could not nibble the spearmint that grows along the edge of the brook.

MONARDA. Bergamot

M. didyma. Brilliant scarlet flowers and fragrant foliage. An old favorite.

MYOSOTIS. Forget-me-not

M. alpestris. Blooms in early spring, so profusely that the plant is hidden beneath a cloud of sky-blue flowers. Dense, compact growth. Good for the rock garden or border. Good cut flower. Requires full sunshine.

M. palustris. *Everblooming Forget-me-not.* A moisture-loving plant. Blooms from late May until frost. Low, prostrate, growth. Beautiful cut flower.

MYRTLE. See Vinca

NEPETA

N. Mussini. A rock garden plant having attractive grey green leaves and spikes of violet blue flowers in early Summer.

ORCHIS. Showy Orchis

O. spectabilis. 6-8 in. A raceme of delicate lavender, deliciously fragrant flowers in May. Very choice. Should be planted in the shade. 35c. each, \$3.50 per 12.

OENOTHERA. Primrose

O. speciosa. 18 in. Aug.-Sept. Delicate, pure white flowers.

O. fruticosa. 1-2 ft. Sometimes called Sundrops. Bright yellow flowers in June and July.

ORNITHOGALUM. Star-of-Bethlehem

O. umbellatum. 12 in. June-July. An old-fashioned, bulbous plant. Clumps of shiny, slender, grasslike foliage amid which the plant sends up slender stems each bearing a cluster of ivory-white, star-shaped flowers of lilylike texture and delicate fragrance. 50c. for 3, \$2.00 per 12.

PACHYSANDRA

P. terminalis. An evergreen ground cover used extensively for planting under shrubbery or evergreens, or where the ground is bare and conspicuous. Covered with white flowers in spring. 25c. each, 3 per 60c., \$2.00 per 12, \$15.00 per 100.

PAPAVER. Hardy Poppy

P. nudicaule. *Iceland Poppy.* A dainty race of poppies, coming into flower in April, and if kept from seeding, will blossom all summer. Bright orange, yellow, or pure white. 18 in.

P. orientale. *Oriental Poppy.* 3-4 ft. Late May and June. The beauty and brilliance of this flower rank it among the foremost perennials. Very large and seemingly made of satin. Immense scarlet flowers. They have a resting period in midsummer when the top disappears.

P. orientale. *Mrs. Perry.* Satiny old-rose. 35c. each, \$3.50 per 12.

PARNASSIA

P. caroliniana. *Grass of Parnassus.* The creamy white blossoms of Parnassia enliven the swamps in August. Flowers are solitary, one inch across borne on 1- to 2-foot stems.



Mertensia virginica (Virginia Cowslip)

Price, any of the above, except as noted, 25c. each, 60c. per 3, \$2.00 per 12, \$15.00 per 100

PEONIES

In spite of its higher price the peony has the reputation of being one of the best of garden investments. A well selected variety, well planted, will increase in beauty for a lifetime. Dig the soil deeply and enrich with old manure. Plant them not more than 3 inches deep and do not allow them to touch the manure. Do not mound up the soil around them as too deep planting causes the shoots to come blind, or without flower buds.

Mixed, Pink, Red, or White, at 35c. each, \$3.50 per 12.

Albatre. Very large; compact rose type. Milk-white. Strong, vigorous and tall growing. Free blooming. Heartily endorsed as one of the best peonies in cultivation. \$1.00 each.

Asa Gray. Large, well formed flower of soft lilac pink. Very fragrant. Semi-rose type. \$1.50 each.

Couronne d'Or. Crown of Gold. Large, beautifully formed flowers with conspicuous golden stamens at the base of the petals. Fragrance and form similar to a waterlily. 50c. each.

Dorchester. A full, large flower of delightful clear pink. 75c. each.

Eugenie Verdier. Magnificent large flowers of delicate flesh pink with lighter margin, overlaid with silvery sheen. 75c. each.

Edulis Superba. The old-fashioned full, double pink; very bright; early. A good variety. 50c. each.

Felix Crousse. Rich amaranth-red. \$1.00 each.

Festiva Maxima. Still a prize winning variety. Immense white, with a tiny scarlet mark near the center. Mid-season. 50c. each.

James Kelway. Exquisite white with a golden glow at base of petals. Very strong grower and deliciously fragrant. \$1.50 each.

Lady Alexander Duff. One of the very finest peonies. Broad petals of French pink tinted flesh. \$2.50 each.

Louis Van Houtte. Old-fashioned red. Large and very double. 75c. each.

Milton Hill. A perfect flower of deeper color than Dorchester. A magnificent full, double flower. \$3.00 each.

Mme. Emile Galle. A large, loosely arranged flower. Delicately beautiful. One of our favorites. Late. 75c. each.

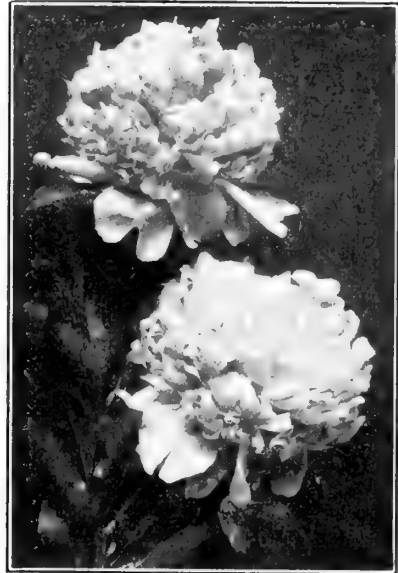
Mons. Jules Elie. Bomb type. A royal beauty among peonies and possibly the largest flowered. Color ideal lilac-pink, overlaid with a silvery sheen which fairly glistens in the sunlight. \$1.00 each.

Mme. de Verneville. Very beautiful, compact bloom, with large outer guard petals and densely double center. Very reliable and free blooming. Early. 50c. each.

Officinalis rubra. Very early flowering bright red, in bloom usually on Memorial Day. \$1.00 each.

Pasteur. Soft pink with yellow lights at base of petals. \$1.75 each.

Primevere. The nearest approach to a yellow peony. Color a soft sulphur-yellow. Circle of wide guard petals and very double center of a deeper shade. Distinct and very lovely. Easily attracts attention among hundreds of kinds. \$4.50 each.



Mons. Jules Elie

Rubra Superba. The best very late red peony. Large, compact rose type. Color deep crimson. Very fragrant. 75c. each.

Richard Carvel. Enormous globular blooms with broad guard petals and high dome-shaped center. Color uniform crimson. A "red Jules Elie." \$5.00 each.

Therese. One of the world's best peonies. Rich satiny pink of huge size. Reflex of petals glossy and shining. \$3.50 each.

Walter Faxon. Large, globular type. Very strong and vigorous. Color an exceedingly rich and beautiful shade of salmon pink; not found in any other peony, and wherever seen, gives it the effect of being the pinkest. Easily distinguished among hundreds of kinds. \$5.00 each.

PENTSTEMON. Beardtongue

P. barbatus torreyi. Tall, graceful spikes of coral-red flowers. Fine for cutting.

P. digitalis. Foxglove Pentstemon. So named from its similarity to the foxglove. The blossoms are much smaller, however. Pure white. Fine for cutting. 18 in. July.

PHALARIS. Ribbon Grass

P. arundinacea picta. A striped grass formerly used in old-fashioned borders and which has been brought back to popularity. Used in arranging baskets or vases. Light green with creamy white stripes.

Price, any of the above, except as noted, 25c. each, 3 for 60c., \$2.00 per 12, \$15.00 per 100

PHLOX

No one thinks of having a garden without its glory of phlox in midsummer. There are literally hundreds of varieties, from which we have selected the following. Phlox will thrive in any ordinary garden soil. It is important not to let it seed as the seedlings usually revert to the old, original purple type, and come up about the roots where it is impossible to get them all out when weeding.

Antonin Mercié. Blue overlaid white.

Astrild. Brilliant deep carmine. In bloom from July till October.

B. Comte. Brilliant Harvard Crimson. Tall and late.

Coquelicot. A tall scarlet phlox. One of the brightest.

Dawn. Beautiful blush pink.

Elizabeth Campbell. Most popular salmon-pink. 35c. each, \$3.50 per 12.

Eugene Danzanvilliers. Clear lilac, entering into white at center.

Ethel Pritchard. A very promising new lavender phlox. 35c. each, \$3.50 per 12.

Frau Anton Buchner. Enormous flowers of perfect form. Pure white.

Hanny Pfeiderer. White, flushed pink with a crimson eye.

Jules Sandeau. A decided addition to our list of phlox and one which attracts immediate attention wherever seen. Immense trusses of bright clear rose which does not fade. Not a tall grower.

Milly von Hoboken. A new bright pink without eye or shading of other color. Most unusual and beautiful. 35c. each, \$3.50 per 12.

Miss Lingard. Earliest white; will bloom twice if flowers are picked.

Mme. Paul Dutrie. Apple-blossom pink.

Mme. Carpentier. A fine large white.

Riverton Jewel. Rose-pink, deepening into rose-red at the center.

Richard Wallace. White with red eye.

R. P. Struthers. Rich flame color. Will not streak or fade.

Rijnstroom. Large flowered bright rose. Very popular.

Stella's Choice. A fine late white with immense branched trusses. Not a tall phlox.

VARIOUS SPECIES

P. divaricata. A lilac-blue phlox blooming in May. 18 in. When established forms large colonies. Very beautiful.

P. pilosa. 1 ft. A variety native to the west. Dense masses of flowers in May. Foliage similar to subulata, but the plants have upright growth. Rose, blue and white mixed colors.

P. reptans. Creeping variety. Prefers dry shade. Flowers rose to rose-purple.

P. subulata. 6 to 8 in. A ground cover. Low, sprawling habit; glossy green, mossy foliage, beneath a mass of bright flowers. Useful for planting with Spring bulbs. Rose, white, or light blue. April-May.

Price of any of the above phlox, except as noted, 25c. each, \$2.50 per 12.

Price, any of the above, except as noted, 25c. each, 3 for 60c., \$2.00 per 12, \$15.00 per 100



Phlox subulata

PHYSOSTEGIA. False-dragonhead

P. virginiana. 3 to 4 ft. Tall, slim habit. Flowers closely set on long, graceful, terminal spikes. Flesh-pink to lavender-pink. Aug.

P. virginiana alba. White form.

PHYSALIS FRANCHETI

Chinese Lantern-plant

P. francheti. Grown for its orange-red fruit which makes splendid decorations for Halloween, or for dried bouquets.

PITCHERPLANT. See Sarracenia

PLATYCODON. Chinese Bellflower

P. grandiflorum. Wide open, bell-shaped flowers, in blue or white, held uprightly from a mass of close, compact foliage. One of the most useful and permanent perennials. No hardy border should be without it.

P. mariesi. A lovely lower growing sort, in bloom from July until Sept. Violet-blue or white flowers.

POLEMONIUM. Jacobs-ladder

P. caeruleum. 18 in. Border plant of easiest culture. Beautiful, clear blue flowers in terminal clusters. Fernlike foliage of decorative value.

P. caeruleum alba. White form.

P. reptans. A dwarf species never more than a foot high. Used for rock gardens or foreground of borders. Many panicles of light blue flowers in May and June.

POLYGONATUM. Solomonseal

P. biflorum. A curious plant bearing tiny green flowers in pairs along the drooping stalk.

PRIMULA. Primrose

P. elatior. An English primrose. Clear yellow flowers in bunches held erect on stems 6 to 8 in. tall.

P. polyantha. 8 in. Red and yellow flowers in earliest spring. One of the most worthy of the spring flowers, being perfectly hardy and very vigorous.

PYRETHRUM. Persian Daisy

P. hybridum. Single flowering plants, having masses of fernlike foliage and long stems bearing daisylike flowers; in shades of red, pink, and white. Splendid for cutting and used extensively by florists. June. 2 to 3 ft.

RANUNCULUS Buttercup

R. acris fl. pl. *Double Buttercup.* Pompons of shining butter-yellow. Blooms in late May and June. 12-18 in.

RUDBECKIA. Goldenglow

R. laciniata. 5 to 6 ft. Aug. Yellow. Free flowering, bright perennial.

SALVIA AZUREA

S. azurea. *Azure Salvia.* 3-6 ft. Tall, branching growth and long, terminal racemes of clear, sky-blue flowers, in August and September. Light blue is a color rarely seen in the fall, and clumps of azure salvia in the border are wonderfully attractive.

S. sclarea (Clary). A biennial herb, 2 to 3 ft. high, blooming in June. The small flowers are pale blue, surrounded by floral leaves of white and old rose, which give the plant a beautiful and unusual effect. Resows itself. Attractive planted with Madonna lilies.

SAPONARIA

S. ocymoides. A trailing plant covered with myriad pink flowers in May and June. For rock gardens or the front of the border.



Primula Polyantha (Primrose)

SARRACENIA. Pitcherplant

S. purpurea. 1 ft. June. Reddish-green. A very curious plant found in swamps. It thrives on the insects which it catches in its pitcher-shaped leaves.

SANGUINARIA. Bloodroot

S. canadensis. Dainty flowers in earliest spring. Pure white, on erect stems 3 or 4 in. high, each with a leaf carefully wrapped about its stalk. Plant in moist shade or sun.

SAXIFRAGA

S. virginiana. *Mountain Saxifrage.* A rock plant 4 to 12 in. high, with panicles of white flowers in early Spring.

SCABIOSA. Pincushionflower

S. caucasica. 2 to 3 ft. Heads of beautiful soft lilac flowers in June and July. A hardy, vigorous plant, the flowers of which are fine for cutting. Perennial.

S. japonica. A late blooming species resembling the annual scabiosa. Flower heads of soft, clear lavender-blue on tall, slim stems. Fine for cutting and blooms after heavy frosts. One of the very finest plants for late summer bloom. Biennial.

SEMPERVIVUM. Houseleek

S. arachnoideum. *Spiderweb Houseleek.* A tiny gray-green form of the hen-and-chickens. Excellent for edging paths or flower borders or for the rock garden. Has a webby substance on the leaves giving it its name. Occasionally throws up 3 to 4 in. flower stems bearing several light red flowers

S. tectorum. *Hen-and-chickens.* A quaint, old-fashioned plant sometimes used for bordering walks or growing in tubs. The leaves form dense rosettes and underneath these, smaller rosettes appear like mother hens with their broods of chickens. Always pleases children.



Sanguinaria canadensis (Bloodroot)

Price, any of the above, except as noted, 25c. each, 60c. per 3, \$2.00 per 12, \$15.00 per 100

SEDUM

- S. acre.** *Goldmoss.* A small, mossy plant of rich golden green color, which quickly carpets the ground in dry or rocky places. Often planted in paths or on rocky ledges. Covers itself from May to July with bright yellow flowers.
 - S. album.** 6 to 8 in. Dark green foliage tufts and flat heads of white flowers in Midsummer.
 - S. douglasi.** Rock plant of dwarf growth. Foliage rich green.
 - S. glaucum.** Miniature clumps of glaucous, blue-grayleaves. Rock plant.
 - S. lydium.** Shapely clumps. Very dwarf. Foliage green, tipped red.
 - S. sarmentosum.** A rapidly spreading sedum, throwing long, graceful sprays of yellowish green leaves. Ye low flower.
 - S. spectabile.** *Showy Sedum.* A taller growing Sedum 12 to 18 in. in height. Immense flat heads of pale pink flowers in late Aug. and Sept.
 - S. spectabile, Brilliant.** The same as above, but the flowers are dark old rose.
- Price, any of the above except as noted, 25c. each; 60c. per 3, \$2.00 per 12, \$15 per 100.

SHASTA DAISIES

Large flowered, snow-white, daisylike flowers, blooming continuously all summer.

SIDALCEA. Prairiemallow

- S. malvaeflora.** Rosy lavender or white flowers, shaped like small hollyhocks. 18 to 24 in. Blooms all the early part of the Summer.
- S. Rose Gem.** 2 ft. Flowers bright satiny rose.

SILENE. Catchfly

- S. orientalis.** *Chimney Pinks.* 2 ft. Deep pink. Biennial.
- S. schafta.** 4 to 8 in. Reliable rock plant. Deep rose-pink flowers in loose clusters during the Summer and Fall.
- S. virginica.** *Fire Pinks.* Loose, sprawling foliage and star-shaped flowers of brilliant red. 1 to 2 ft. July.



Stokesia Cyanaea (Cornflower Aster)

SMILACINA. False Solomonseal

- S. racemosa.** 1 to 3 ft. A beautiful native flower. Filmy heads of creamy white flowers on gracefully bending stalks. Late May and June.

SPIDERWORT. See Tradescantia

SPIRANTHES. Ladies-tresses

- S. cernua.** A Summer-flowering orchis, useful for planting in moist places in full sun. 8 to 12 in. Flowers creamy white and fragrant.

STACHYS. Woundwort

- S. lanata.** Thick, wooly, gray-green foliage, supposedly with medicinal properties. Flowers blue in loosely arranged racemes. Height 1½ to 2 ft. June, July.

STOKESIA. Cornflower Aster

- S. cyanaea.** Very fine cut flower. Like annual China Asters. Color blue. 18 in. Blooms all summer.
- S. cyanaea New Hybrids.** Various colors.

STREPTOPUS. Twistedstalk

- S. roseus.** The wood nymphs took a Solomon Seal divided it into three branches instead of one, painted the flowers a delicate lavender pink, made the fruit much larger and scarlet instead of blue and called it Twistedstalk.

SWEET-MARY

Sweet-scented foliage. Often seen in the herb garden or old-fashioned border. Inconspicuous yellow flowers.

SWEET-WILLIAM. Bunch Pinks

- Well-known garden flower. Rich masses of color in June and July. The newer shades of pure pink and crimson are much admired.
- Crimson.** Deep rich color.
- Newport Pink.** Watermelon pink.
- White.**
- Mixed Colors.** 15c. each, \$15.00 per 12.

TIARELLA. Foamflower

- T. cordifolia.** Lacy flower heads of soft, cream white in late May.

THALICTRUM. Meadowrue

- T. adiantifolium.** *Maidenhair-leaved Rue.* Feathery yellow green flowers. 1 to 2 ft.
- T. aquilegifolium.** *Columbine-leaved Rue.* 2 to 3 ft. Feathery white flowers in early Summer.
- T. diptercarpum.** *Yunnan Meadowrue.* Clouds of soft rose lilac flowers with citron-yellow stamens. Aug.-Sept. One of the most valuable perennials either for the garden, or for cutting. 35c. each, \$3.50 per 12.
- T. glaucum.** *Dusty Meadowrue.* Lovely flower heads of soft yellow. 3 to 4 ft. tall.
- T. polygamum.** *Tall Meadowrue.* 4 to 6 ft. A late summer native, at home near brooks and pools. Feathery flowers of pure white. Fine cut flower. Thrives in the garden border.

Price, any of the above, except as noted, 25c. each, 60c. per 3, \$2.00 per 12, \$15.00 per 100.

THERMOPSIS

T. caroliniana. A tall growing flower with clover-like leaves and handsome spikes of golden yellow, pea-shaped flowers. Greatly resembles Lupine, but the color is clear yellow. 50c. each, \$5.00 per 12.

THYMUS

T. vulgaris. An old-fashioned, fragrant herb used for carpeting barren banks or for rockeries. Completely covered by tiny spikes of rose-red flowers in June and July.

TRADESCANTIA. Spiderwort

T. virginiana. Clumps of long, grassy foliage. Single, purple flowers with golden stamens. Old-fashioned flowers which are both unique and beautiful. June-July.

TRITOMA. Red-hot-poker Plant

T. pfitzeri. A magnificent perennial, increasingly popular. In August, September and October it is aflame with immense heads of tubular flowers, bright scarlet in color. 2 to 3 ft.

TRILLIUM. Wakerobin

T. erectum. Dark red.

T. undulatum. *Painted Trillium.* White splashed with crimson.

T. grandiflorum. White flowers; unusually large.

The Trilliums are of easy culture if given moist shade and a rich soil. Do not plant under evergreens.

TROLLIUS. Globeflower

T. asiaticus. *Orange Globe.* Large, orange flowers.

T. europaeus. Large, lemon-yellow flowers like buttercups, 1 to 1½ in. across, on long, strong stems. Fine for cutting.

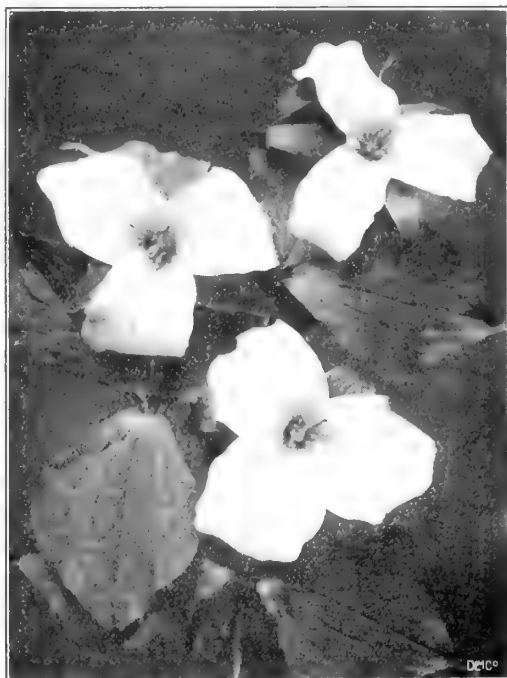
Either of above. 40c. each, \$4.00 per 12.

TUNICA

T. saxifraga. *Rock Tunica.* A rock garden plant with a heavy growth of narrow, rich green leaves and clouds of tiny white flowers in June and July.



Veronica longifolia subsessilis.



Trillium grandiflorum (Wakerobin)

VALERIANA. Garden Heliotrope

V. officinalis. 3 to 5 ft. July. Finely cut foliage, and long flower stems terminated by round heads of fragrant flowers. Cats are very fond of this plant.

VERBASCUM. Hardy Mullein

V. phoeniceum. Slender spikes 12-18 in. tall, with flowers in colors from white to purple; splendid rock plant. Biennial resowing itself.

V. olympicum. *Garden Mullein.* 3-5 ft. Tall spires of clear, lemon-yellow flowers in June. A fine color effect. Biennial. 25c. each; 60c. per 3, \$2.00 per 12.

V. willmottiae. A new white variety of Verbascum which we offer for trial. 35c. each, \$3.50 per 12.

VERONICA. Speedwell

V. incana. 8 to 12 in. Close mats of silver-gray foliage and very attractive spikes of bellflower-blue flowers in July. Unexcelled rock plant.

V. longifolia. 2 to 3 ft. Blue. Long spikes of dusky blue flowers in July and August.

V. longifolia subsessilis. A handsome Veronica, often called the best. Surely the most conspicuous. Rich blue flowers on heavy, stiffly held spikes. Very striking. 25c. each, \$2.50 per 12.

V. teucrium. 12 in. Invaluable rock garden or border plant completely hidden by masses of bright gentian-blue flower spikes, inflate May and June.

V. rupestris. Low growing, splendid for tumbling over rocks and covering itself in May with brilliant masses of clear blue flower spikes.

Price, any of the above, except as noted, 25c. each, 3 for 60c., \$2.00 per 12, \$15.00 per 100

VIOLA

- V. bosniaca.** *Bosnian Viola.* A delicately beautiful viola, well adapted to the rock garden. Will thrive in partial shade. Rounded violet-shaped, small flowers of bright rose-pink. Continually in bloom. Very choice. 50c. each, \$5.00 per 12.
- V. cornuta.** *Horned Violet.* 1 ft. Blooms all season. A beautiful species. Color and form like a large violet. Clear lavender. Always in bloom.
- V. cornuta alba.** A much-prized form. Exactly like the above, but a pure, snow-white. Never out of bloom.
- V. Jersey Gem.** Flowers dark violet-blue, almost purple. Petals waved. In full bloom from April until November. The flowers are similar to those of a violet, though much larger and on stems long enough for cutting. Lovely combined with Lily-of-the-valley, Trollius, or many others. We cannot recommend this too highly.
- V. White Jersey Gem.** Pure snowy white, otherwise like the above. A new introduction, and rare. 75c. each, \$7.50 per 12.

BEDDING VIOLAS OR TUFTED PANSIES

The little violas are so popular that they need no description. They are always in blossom and the colors are a great addition to the foreground of the border. They are especially adapted for the rock garden and delightful results may be had by planting quantities of these where they will carpet the ground near other perennials of harmonizing colors.

- V. Admiration.** Clear reddish purple.
- V. Black Prince.** Velvety black. Pretty with the yellow.
- V. Bowles Black.** Midget faces of real black with tiny golden yellow eye.
- V. Blue Perfection.** Bright violet-blue flowers, completely cover the plants throughout the entire season. Especially lovely.
- V. lutea.** Dainty, pure golden yellow.
- V. Papilio.** Violet-blue. Though large, these are shaped more like violas.
- V. Sutton's Apricot.** Charming little fellow with real apricot complexion and sometimes wearing a wine-colored bonnet. 35c. each, 3 for \$1.00.
- V. White Perfection.** Snow-white. Drifts of these white violas are beautiful at the feet of iris.

Price, any of the above Violas 15c. each, \$1.50 per 12, \$10.00 per 100.



Pansies

Price, any of the above, except as noted, 25c. each, 60c. per 3, \$2.00 per 12, \$15.00 per 100



Bedding Violas

GARDEN VIOLETS

- Confederate Violets.** The old-fashioned, large-flowered white with tiny blue lines in the throat.
- V. cucullata.** A rapidly spreading garden violet. Long-stemmed flowers of deep blue. Will thrive in a partially sunny place.
- Double Russian.** A hardy strain of very double, rich purple violets. Extremely rare and hard to obtain. 50c. each, \$5.00 per 12.

NATIVE VIOLAS

- V. canadensis.** A violet rare enough to be desirable, and beautiful enough to warrant its use in rock gardens and shady corners. White face with dainty reflex of soft lavender-blue. Plant or cut them with Maidenhair ferns as they are natural allies in the woods.
- V. pubescens.** *Downy Yellow Violet.* Another violet worthy of a place in the rock garden. Leafy stems and flowers of soft yellow. Will do well in a dry place.
- V. Blanda.** A dainty little pure white sweet violet, blooming in moist sun or shade in earliest Spring.

VINCA. Myrtle-periwinkle

- V. minor.** A ground cover used in heavy shade where grass will not grow. Bright blue flowers in June.

YUCCA. Adams Needle

- Y. filamentosa.** 5 ft. June-July. Immense spikes of creamy white flowers. Very fragrant. Heavy clumps. Evergreen. 50c. each, \$5.00 per 12.
- Y. filamentosa variegata.** *Variegated Yucca.* Leaves have broad margins of a beautiful creamy yellow. 75c. each.

PANSIES

Just a few thousand pansies from a fine strain of seed. Price 50c. per doz. \$4.00 per 100.

The following list of plants may assist you. They are by no means complete, but we offer them as suggestions.

PLANTS FOR THE SUNNY ROCK GARDEN

Achillea tomentosa. Yarrow
Alyssum saxatile. Alyssum
Anthemis kelwayi. Marguerite
Aquilegia canadensis. Columbine
Arabis. All kinds
Arenaria montana. Sandwort
Acelepias tuberosa. Butterflyweed
Campanula carpatica. Carpathian Harebell
Campanula rotundifolia. Bluebells
Cerastium tomentosum. Snow-in-Summer
Cheiranthus allioni. Wallflower
Corydalis glauca. Pale Corydalis
Daphne cneorum. Garlandflower
Dianthus deltoides. Maiden Pink
Dianthus caesius. Cheddar Pink
Dianthus plumarius. Clove Pink
Delphinium grandiflorum. Chinese Larkspur
Dodecatheon media. Shootingstar
Donnededia punctilobula. Hayscepted Fern
Gypsophila repens. Creeping Babysbreath
Helianthemum. Rockrose
Heuchera sanguinea. Coralbells
Iberis sempervirens. Hardy Candytuft
Iberis gibraltarica.
Iris cristata. Crested Iris
Iris pumila. Dwarf Iris
Lilium philadelphicum. Wood Lily
Lilium tenuifolium. Coral Lily
Limolium latifolia. Sealavender
Linum perenne. Hardy Blue Flax
Papaver nudicaule. Iceland Poppy.
Nepeta mussini.
Phlox subulata.
Polemonium reptans. Creeping Jacobs-ladder
Saponaria ocymoides. Creeping Soapwort
Saxifraga virginensis. Mountain Saxifrage
Sempervivum arachnoideum. Spiderweb House-
 leek
Sempervivum tectorum. Hen-and-chickens
Sedum acre. Goldmoss
Sedum album.
Sedum douglasii
Sedum lydium
Sedum sarmentosum
Silene schafta.
Thymus vulgaris. Thyme
Thymus vulgaris alba. White Thyme
Tunica saxifraga. Rook Tunica
Verbascum phoeniceum.
Veronica incana.
Veronica teurcrium. and *rupestris*
Viola. All sorts

PLANTS THAT PREFER SHADE

Actea alba. White Banberry
Actea rubra. Red Banberry
Anemone sylvestris. Wood Anemone
Anemone quinquefolia. Windflower
Aquilegia. Most kinds
Arisaema triphyllum. Jack-in-the-Pulpit
Campanula rotundifolia. Bluebells
Clintonia borealis. Bluebells
Cyripedium acaule. Pink Ladyslipper
Cyripedium parviflorum. Yellow Ladyslipper
Cyripedium spectabile. Showy Ladyslipper
Cornus canadensis. Bunchberry
Dicentra canadensis. Squirrelcorn
Dicentra cucullaria. Dutchmans-breecches
Dicentra eximia. Plumy Bleedingheart
Erythronium americanum. Troutlily
Epigaea repens. Trailing Arbutus
Eupatorium urticaefolium. Snow Thorough-
 wort

FERNS

Adiantum pedatum. Maidenhair Fern
Polystichum acrostichoides. Christmas Fern
Dryopteris marginalis. Leathersood Fern
Dryopteris spinulosa. Toothed Woodfern
Asplenium platyneuron. Ebony Spleenwort
Asplenium trichomanes. Maidenhair Spleen-
 wort
Polypodium vulgare. Polypody
Dryopteris linneana. Oakfern
Gentiana andrewsii. Closed Gentian
Habenaria umbriata. Giant Purple Fringed
 Orchis
Habenaria psychodes. Purple Fringed Orchis
Hepatica triloba. Round-leaved Hepatica
Hepatica acutiloba. Sharp-leaved Hepatica
Iris verna. Vernal Iris
Mertensia virginica. Virginia Cowslip
Mitchella repens. Partridgeberry
Orchis spectabilis. Showy Orchis
Phlox divaricata. Canada Phlox
Phlox reptans. Creeping Phlox
Polygonatum biflorum. Solomonseal
Sanguinaria canadensis. Bloodroot
Streptopus roseus. Twisted Stalk
Tiarella cordifolia. Foamflower
Trillium erectum. Wake Robin
Trillium erythrocarpum. Painted Trillium
Trillium grandiflorum. Snow Trillium
Viola canadensis. Canada Violet
Viola blanda. Sweet White Violet
Viola pubescens. Downy Yellow Violet
Vinca minor. Blue Myrtle

PLANTS ADAPTED TO THE BOG-GARDEN

Caltha palustris. Marsh-marigold
Chelone Lyoni. Pink Turtlehead
Chelone glara. White Turtlehead
Eupatorium perfoliatum. Thoroughwort
Eupatorium purpureum. Joe-Pye-Weed

FERNS—

Osmunda regalis. Royal Fern
Oncoclea sensibilis. Sensitive Fern
Parnassia caroliniana. Parnassia
Mentha peperita. Peppermint
Mentha spicata. Spearmint
Myosotis palustris. Forget-me-not
Hibiscus. Mallow
Iris ochroleuca. Yellowband Iris
Iris pseudacorus. Yellowflag
Iris versicolor. Blueflag

Physostegia virginiana. False-dragonhead
Physostegia virginiana alba.
Sarrecenia purpurea. Pitcherplant
Thalictrum polygamum. Meadow rue

PLANTS PREFERRING ACID SOIL

Rhododendrons.
Vaccinium corymbosum. Highbush Blueberry
Clintonia borealis. Bluebells
Cornus canadensis. Bunchberry
Cyripedium acaule. Pink Ladyslipper
Epigaea repens. Trailing Arbutus
Lilium philadelphicum. Wood Lily
Iris verna. Vernal Iris
Kalmia latifolia. Mountain Laurel
Tiarella cordifolia. Foam Flower
Trillium erythrocarpum. Painted Trillium

PLANTS FOR AN HERB GARDEN

Artemisia abrotanum. Southernwood
Artemisia stellata. Old-woman
Eupatorium perfoliatum. Thoroughwort
Monarda didyma. Bee Balm
Lavandula vera. Sweet Lavender

Mentha peperita. Peppermint
Mentha spicata. Spearmint
Sweet-Mary
Thymus vulgaris. Thyme

INDEX

	Page		Page
Evergreens, Broad-leaved.....	21	Perennials, Hardy	34-56
Evergreens, Coniferous.....	18, 19, 20	Phlox	52
Ferns, Hardy.....	41	Roots and Plants	13
Fruits, Small.....	10, 11, 12, 13	Roses	31-33
Fruits, Trees.....	3, 4, 5, 6, 7, 8, 9	Shrubs, Hardy	22-28
Iris.....	44, 45, 46, 47	Trees, Deciduous	14-17
Lilies, Garden	48, 49	Trees, Fruit	3, 4, 5, 6, 7, 8, 9
Peonies.....	51	Vines, Hardy	29, 30

GEO. D. AIKEN

PUTNEY, VERMONT